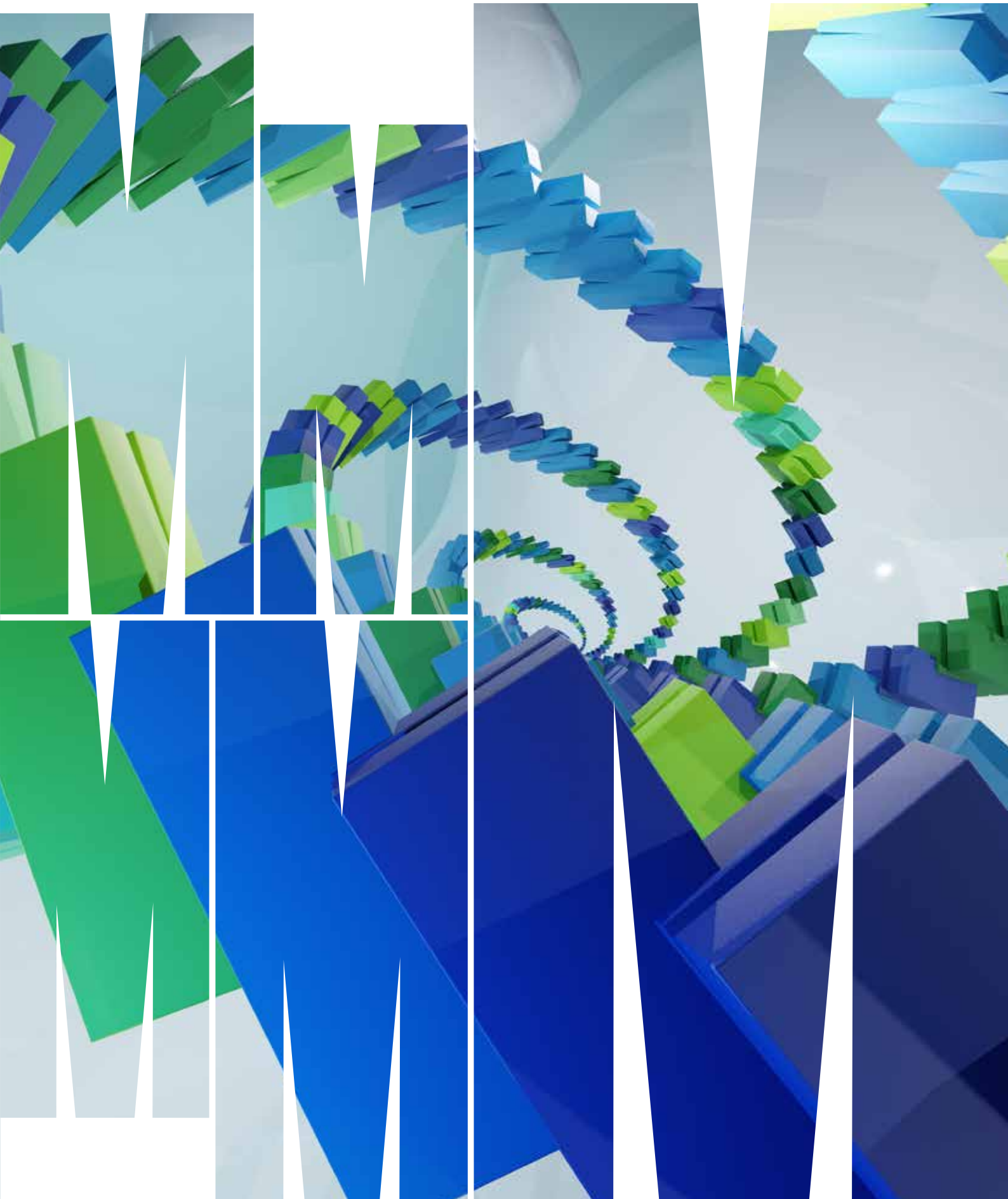


**INTERNATIONAL  
UNDERGRADUATE  
COURSE GUIDE**  
2025



# ONE MONASH

## CREATE CHANGE WITH MONASH

Whether it's through education, research, innovation, or changing the cultural landscape, we've been working to change the world for more than 60 years, and we're not about to stop. At Monash, we see challenges as opportunities and we're committed to making a positive impact on the world so that future generations can thrive. Our academics, students, staff, alumni, and donors make up a community of change-makers. Whether you want to change your life, your career, your community, or the future, it starts at Monash.

Are you ready to create change with Monash?

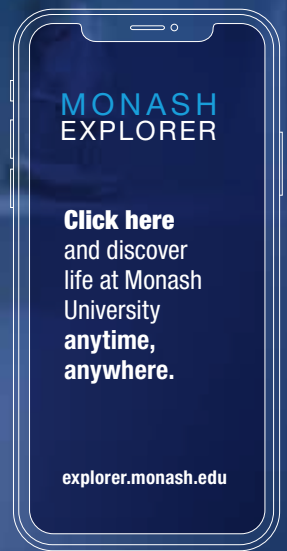
[CLICK HERE to learn more](#)



## A GLOBAL COMMUNITY

As a university with a global footprint, we know we have to play our part in solving the problems facing the world. Our main base is in Australia, but our presence extends to locations in China, Malaysia, Indonesia, Italy and India. We also have partnerships with many international teaching institutions. Through our shared values, experiences and goals, we are more connected now than ever.

Each Monash campus has its own personality, and all are friendly, welcoming communities where you'll feel at home.



**3** INTERNATIONAL TEACHING LOCATIONS

- ITALY  
Prato
- INDIA  
Mumbai
- CHINA  
Suzhou

**6** CAMPUSES

- MALAYSIA  
Kuala Lumpur
- INDONESIA  
Jakarta
- AUSTRALIA MELBOURNE  
Clayton  
Caulfield  
Parkville  
Peninsula

**100+** PARTNER UNIVERSITIES AROUND THE GLOBE

## ACKNOWLEDGEMENT OF COUNTRY

Monash University recognises that its Australian campuses are located on the unceded lands of the people of the Kulin Nations, and pays its respects to their Elders, past and present.

## UNIVERSITY-WIDE RANKINGS

**#23** IN THE WORLD  
QS Sustainability Rankings 2024

**#35** IN THE WORLD  
US News and World Report 2024-2025

**#37** IN THE WORLD  
QS World University Rankings 2025

**#37** IN THE WORLD  
Times Higher Education (THE) World University Rankings 2025

**#62** IN THE WORLD  
Times Higher Education (THE) World Reputation Rankings 2022

**#82** IN THE WORLD  
Shanghai Rankings' Academic Ranking of World Universities 2024



# MONASH ENRICH

Work with the UN or Microsoft, explore global learning experiences and more.

Build an enviable résumé with the highly sought-after innovation, intercultural and entrepreneurial skills that set you apart.

Experience life-changing opportunities that empower you to drive change, discover new perspectives, and positively impact local and global communities.

Monash Enrich's website lets you discover diverse opportunities from across Monash. You can create a university experience based on what you love, as well as the new topics you're keen to explore.

Filter opportunities by areas of interest and uncover unmissable offerings that resonate with you, including electives (no prerequisites or corequisites) and programs (credit and non-credit bearing).

[enrich.monash.edu](http://enrich.monash.edu)

## GLOBAL IMMERSION GUARANTEE (GIG)

Explore cross-cultural learning experiences.

Take part in a life-changing funded global learning experience with the GIG unit.

You'll travel to an international destination and learn how local leaders are addressing the human impact on the environment. You'll spend two weeks overseas, expanding your intercultural skills and learning how to lead real change on the ground.

We'll cover your flight, accommodation and visa costs – you'll only need to cover, tuition and some food and personal expenses. Destinations have included: Fiji, Vanuatu, Indonesia, Italy, India, China, Malaysia and Samoa.

## MONASH INNOVATION GUARANTEE (MIG)

Connect with industry and enhance your résumé.

Gain hands-on industry experience with big-name organisations like the United Nations (UN), Microsoft and Amnesty International as part of your degree with the Monash Innovation Guarantee (MIG) unit.

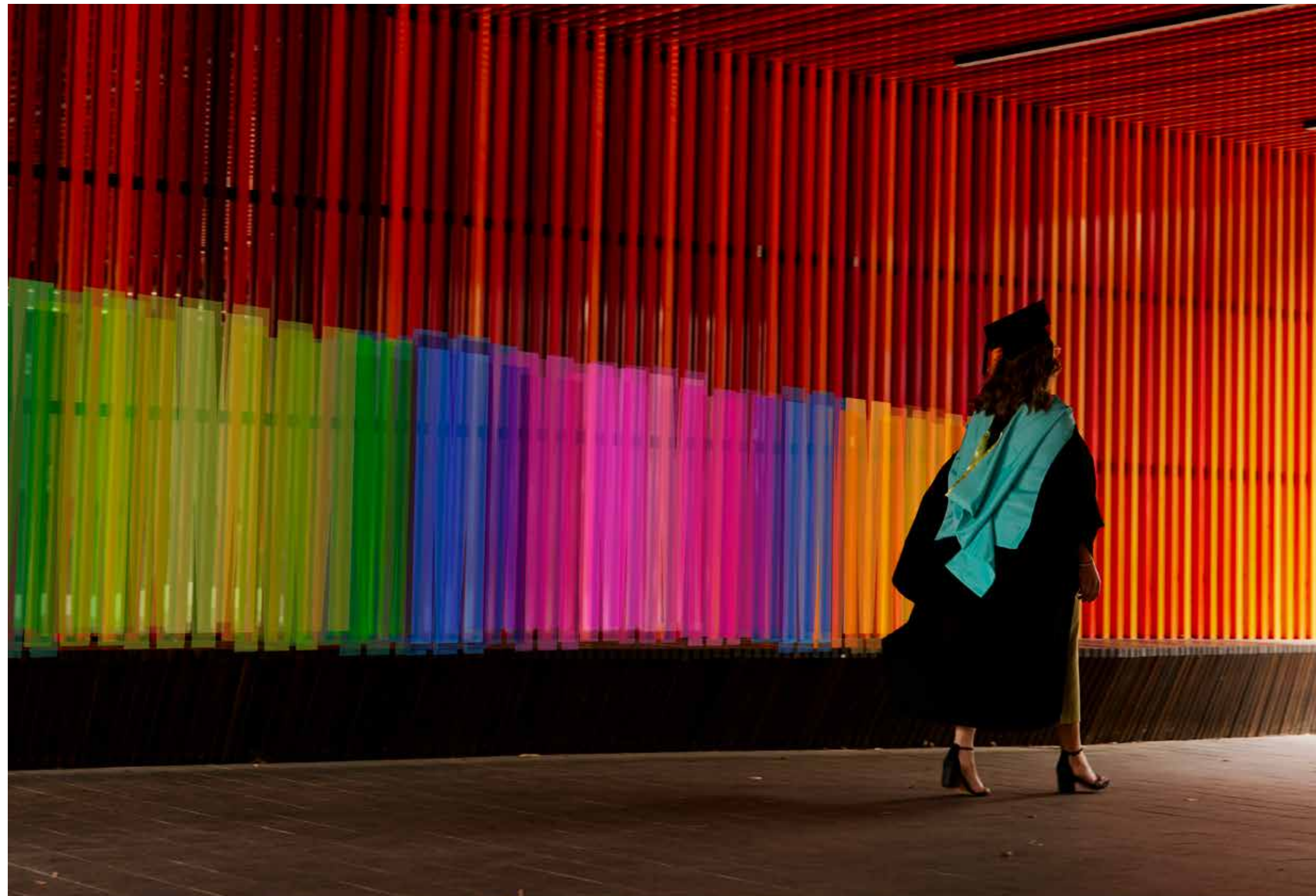
MIG isn't like a traditional internship – you'll collaborate directly with influential industry leaders and inspiring innovators. No need to wait until you graduate to make a real impact – MIG helps you make important connections and have your voice heard now.

## RESEARCH, EXPERIMENTATION AND DISCOVERY (RED)

Turn research into real-life impact.

Innovative Monash research has been transforming the world for more than 60 years, from the world's first successful IVF to game-changing green technology.

Here's your chance to contribute to the kind of original thinking that breaks boundaries and transforms people and the planet. RED units equip you with the capability to translate research into real-life innovation that transforms lives and communities.



## VOLUNTEERING

Get credit for contributing to your community while you study.

You can now get credit points towards your degree by enrolling in our new volunteering unit. You don't need to choose between making a difference and focusing on their studies – you can do both through this exciting opportunity.

Volunteering is a powerful way to build invaluable connections and make a positive impact. By including volunteering in your résumé, you show employers you have leadership capability and a community-minded outlook.

## PROFESSIONAL NETWORKS

Our support is ongoing, even after you graduate. Through our active network and continued professional education, you'll always be supported by us.

 **CLICK HERE**  
for more information on this flagship program



# WAYS INTO MONASH



## SCHOLARSHIPS

We're committed to attracting academic high-achievers and producing internationally competitive graduates. These scholarships are just some of those we offer<sup>1</sup>:

- Monash international leadership scholarship: offered to high achievers with potential to be an ambassador for the University
- Monash international scholarship for excellence: offered to the top 10 students achieving an ATAR of 98+ (or through equivalent IB or Year 12 systems)
- Monash international merit scholarship: achieved within the top 5% of your international qualification (e.g. A levels)

Our website lists the full range of scholarships available including: honours and research scholarships, scholarship for current students, faculty and donor scholarships.

## STUDY GRANTS

As an international student applying to study an undergraduate course at Monash University in Australia, you'll automatically be assessed for a Monash University International Study Grant offer.

- You must study a minimum credit-point load per semester to maintain your grant.
- Please note that Monash University International Study Grants are limited, so we encourage you to apply early.

### Am I eligible?<sup>2</sup>

You must first apply for a Monash course. Monash University International Study Grants are awarded based on select eligibility criteria including:

- Study level – new commencing students undertaking undergraduate degrees are eligible
- Academic criteria – you must meet our academic entry requirements and have a conditional or full offer letter to study at a Monash Australia campus.

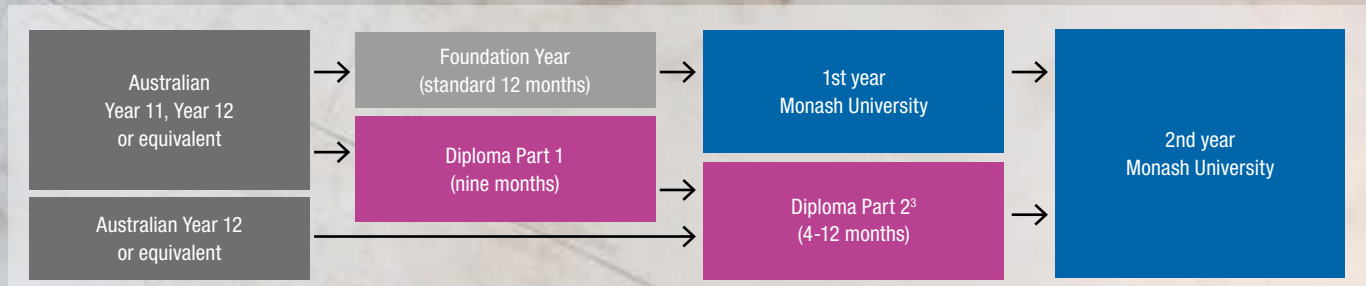
For more information on our scholarship offering [CLICK HERE](#)

For more information on our International Study Grants [CLICK HERE](#)

## MONASH COLLEGE

Monash College offers two academic pathways into Monash University: Foundation Year and Monash College Diplomas. All you need to do is decide which is best for you.

For all details on Monash College [CLICK HERE](#)



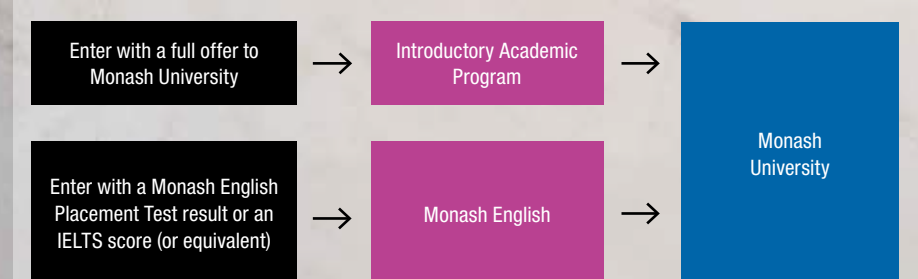
## MONASH ENGLISH

Monash College also offers two English programs to help you develop the English language skills you need to succeed.

- **Monash English:** our core language pathway for you to meet the English language requirements for Foundation Year, Diplomas and your Monash undergraduate course.
- **Introductory Academic program** – available if you've received a full offer to Monash University. This 5-week program provides academic skills training to give you a head start in your university studies.

[monashcollege.edu.au/courses/english](http://monashcollege.edu.au/courses/english)

## CHOOSE YOUR ENGLISH LANGUAGE PATHWAY



<sup>1</sup> Scholarships will have their own criteria – visit our website for full details.

<sup>2</sup> Additional eligibility criteria apply and some courses may be excluded. Please visit the website for more detail.

<sup>3</sup> Exceptions apply – Fine Art and Architectural Design enter the first year with four units of credit.



# LIVING IN MELBOURNE

Our Australian base is a vibrant, multicultural city that offers an abundance of cultural festivities, international sporting events, cafés and restaurants with cuisines from around the world, beautiful parks and beaches, and an eclectic mix of music and arts. You couldn't pick a better place to live.

As one of the world's most liveable cities<sup>1</sup>, you can expect excellence in public transport and healthcare, as well as opportunities for casual work while studying. Plus, Melbourne is renowned as a welcoming environment for international students, providing a home away from home.

<sup>1</sup> Economist Intelligence Unit 2019.



Image: View of Melbourne city



Image: Aussie Rules football game



Image: Brighton beach boxes, Victoria



Image: Typical café in Melbourne



# LIFE AT MONASH

We want you to get the most out of your university life and that goes beyond what course you enrol in.

## YOUR STUDENT EXPERIENCE

Start with a short stroll to class before lunch; or chat with your friends at one of the cafés. Study on the lawns in the afternoon. Connect with fellow travellers in our clubs and societies. Gyms, tennis courts, sports fields, and even restaurants – they're all available to you as you build your student life at Monash.

### Connect with peers

A huge part of your student life will be in the connections you make. We offer a myriad of ways to connect with other students. There are hundreds of clubs and associations, and we run events and activities throughout the year that will allow you to connect with other people and cultures. We run a student news service that you can join, and we also have a religious centre that is available to all denominations.

### Academic services

Monash offers various services to help you both at the administration level, but also with study programs to help you.

### Career development services

We want you to develop your employability skills and we offer services to help you with that. We offer career, leadership and volunteering opportunities. You can connect with your peers through our peer-mentoring program as well.

### Health and security services

Staying physically and mentally healthy can impact on the success of your studies. We offer medical, dental, counselling and pharmacy services on our campuses. We also offer disability support services, and LGBTQIA+ support services as well. Our security services are staffed 24-hours, so you can be sure to have assistance available to you if you're staying back late to study.



**CLICK HERE**  
to learn more about our support services

## LIVING ON CAMPUS

Where you'll live is one of the more important decisions you'll make at university. From halls of residence or self-contained studio apartments on-campus, to tips for renting your own place, we're here to help.

### On-campus accommodation

Living on campus offers convenience, fun, and safety. Join our inclusive residential community to enjoy weekly events, make friends, and receive support from our live-in residential teams and 24/7 security assistance. On-campus accommodation is available at the Clayton and Peninsula campuses in a range of different styles from shared apartments, halls of residence and self-contained studio apartments! Scan the QR code to view pricing and inclusions<sup>1</sup>.

**Applications for on-campus accommodation are free and open from September.**

### Off-campus accommodation

If you choose to live in the private rental market on your own, or with a group of friends, we have helpful information to help you make an informed decision! Scan the QR code for more information.

<sup>1</sup> The fees for living on campus at Monash University vary depending on the type of accommodation. On-campus accommodation costs include gas, water, electricity, internet, residential parking permit and laundry facilities.



Image: Caulfield campus



Image: Turner Hall, Clayton Urban Community

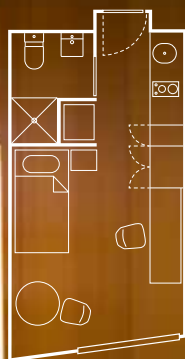


Image: Monash Merchant, Clayton campus



**CLICK HERE**  
for more about Monash Residential Services

Image: Caulfield campus



# HOW TO BUILD YOUR COURSE

So, you know exactly what studies you're keen to pursue? Or maybe you want to explore your options? Either way, you can create the course that best suits you.

## COURSE TYPES

You'll enrol in either a comprehensive, specialist or a double degree course.

### COMPREHENSIVE COURSES

Comprehensive courses offer many possibilities, and are a great option if you're not quite sure what to pursue. All our comprehensive courses have majors/minors so you can build a course based on your interests.

#### Comprehensive course map (indicative)

YEAR 1				
SEM 1	MAJOR UNIT	MINOR UNIT	DISCIPLINE SPECIFIC	FREE ELECTIVE
SEM 2	MAJOR UNIT	MINOR UNIT	DISCIPLINE SPECIFIC	FREE ELECTIVE
YEAR 2				
SEM 1	MAJOR UNIT	MINOR UNIT	DISCIPLINE SPECIFIC	FREE ELECTIVE
SEM 2	MAJOR UNIT	MINOR UNIT	DISCIPLINE SPECIFIC	FREE ELECTIVE
YEAR 3				
SEM 1	MAJOR UNIT	MAJOR UNIT	FREE ELECTIVE	FREE ELECTIVE
SEM 2	MAJOR UNIT	MAJOR UNIT	FREE ELECTIVE	FREE ELECTIVE

### SPECIALIST COURSES

Specialist courses are quite focussed in their subject areas. You still have options to broaden your studies, but you'll specialise in a particular subject area.

#### Bachelor of Biomedical Science (indicative)

YEAR 1				
SEM 1	DISCIPLINE SPECIFIC	DISCIPLINE SPECIFIC	DISCIPLINE SPECIFIC	ELECTIVE
SEM 2	DISCIPLINE SPECIFIC	DISCIPLINE SPECIFIC	DISCIPLINE SPECIFIC	ELECTIVE
YEAR 2				
SEM 1	DISCIPLINE SPECIFIC	DISCIPLINE SPECIFIC	DISCIPLINE SPECIFIC	ELECTIVE
SEM 2	DISCIPLINE SPECIFIC	DISCIPLINE SPECIFIC	DISCIPLINE SPECIFIC	ELECTIVE
YEAR 3				
SEM 1	DISCIPLINE SPECIFIC	ELECTIVE	ELECTIVE	
SEM 2	DISCIPLINE SPECIFIC	ELECTIVE	ELECTIVE	

## HOW TO CREATE YOUR COURSE

No matter the type of course you choose, you'll create your course by picking units from within or outside your discipline area.

- **Discipline-specific:** these must be completed as part of your studies.
- **Discipline-elective:** you choose what unit to study from a list of units within your study area.
- **Free-electives:** a unit offered by Monash from any study/interest area.

Your unit choices will focus or broaden your studies. What's available to you will vary depending on the course you've enrolled in.

### DOUBLE DEGREES

Double degrees allow you to study towards two degrees at the same time. You can keep your options open and develop expertise in different but complementary areas. You'll not only save two years of time, you'll also save two years of course fees.

We offer two kinds of double degrees: double undergraduate degrees, or undergraduate/graduate degrees.

#### Double undergraduate degree

A double undergraduate degree course takes two years less to complete than studying the two degrees separately. This is because the required units in one course count as electives in the other. See the sample map below.

#### Bachelor of Business and Bachelor of Arts (indicative)

YEAR 1				
SEM 1	BUSINESS	BUSINESS	ARTS	ARTS
SEM 2	BUSINESS	BUSINESS	ARTS	ARTS
YEAR 2				
SEM 1	BUSINESS	BUSINESS	ARTS	ARTS
SEM 2	BUSINESS	BUSINESS	ARTS	ARTS
YEAR 3				
SEM 1	BUSINESS	BUSINESS	ARTS	ARTS
SEM 2	BUSINESS	BUSINESS	ARTS	ARTS
YEAR 4				
SEM 1	BUSINESS	BUSINESS	ARTS	ARTS
SEM 2	BUSINESS	BUSINESS	ARTS	ARTS

BUSINESS	specified study	ARTS	specified study
BUSINESS	major	ARTS	major

#### Undergraduate/graduate double degrees

Some double degree courses incorporate both an undergraduate and graduate element. After five years' study, you'll graduate with both a bachelor's and a master's degree.

These courses are:

- Bachelor of Architectural Design and Master of Architecture
- Bachelor of Actuarial Science and Master of Actuarial Studies
- Bachelor of Medical Science and Doctor of Medicine
- Bachelor of Pharmacy (Honours) and Master of Pharmacy.

In addition, the Bachelor of Economics, Bachelor of Engineering (Honours) and Arts undergraduate courses offer accelerated master's pathways that enable you to complete an expert master's course with only one further year of study.

## OUR RANGE OF DOUBLE DEGREES

Monash has one of the largest offerings of double degree combinations in Australia. For admission into a double degree, generally the higher entry requirements apply of the two single degrees. The range of criteria that applies to each single degree also applies to the double degree. For example, if you're applying for the Bachelor of Arts and Bachelor of Music, you'll need to meet the subject prerequisites for both courses and satisfy any additional requirements. Some double degree combinations may require you to study across two campuses in order to complete your studies.

### ART, DESIGN AND ARCHITECTURE

#### ARCHITECTURAL DESIGN

- Architecture (Master)
- Engineering<sup>1</sup>

#### DESIGN

- Arts • Business
- Engineering<sup>1</sup>
- Information Technology
- Media Communication

#### FINE ART

- Arts • Business • Education<sup>1</sup>
- Information Technology
- Media Communication

### ARTS

#### ARTS

- Business • Commerce
- Criminology • Design
- Education<sup>1</sup> • Engineering<sup>1</sup>
- Fine Art • Global Studies
- Health Sciences
- Information Technology
- Laws • Marketing
- Media Communication
- Music • Politics, Philosophy and Economics • Psychology
- Science

#### CRIMINOLOGY

- Arts • Information Technology
- Laws

#### GLOBAL STUDIES

- Arts • Commerce
- Information Technology
- Laws • Science

#### INTERNATIONAL RELATIONS

Laws

#### MEDIA COMMUNICATION

- Arts • Business • Design
- Fine Art • Marketing

#### MUSIC

- Arts • Commerce • Education<sup>1</sup>
- Laws • Science

#### POLITICS, PHILOSOPHY AND ECONOMICS

- Arts • Commerce • Laws

### BUSINESS

#### ACCOUNTING

- Business

#### ACTUARIAL SCIENCE

- Commerce
- Actuarial Studies (Master)

#### BANKING AND FINANCE

- Business

#### BUSINESS

- Accounting • Arts
- Banking and Finance
- Design • Education<sup>1</sup>
- Fine Art
- Information Technology
- Marketing
- Media Communication

#### COMMERCE

- Actuarial Science • Arts
- Biomedical Science
- Computer Science
- Economics • Engineering<sup>1</sup>
- Finance • Global Studies
- Information Technology • Laws
- Music • Politics, Philosophy and Economics • Psychology
- Science

#### ECONOMICS

- Commerce

#### DIGITAL BUSINESS

- Business
- Information Technology

#### FINANCE

- Commerce

#### MARKETING

- Arts • Business
- Media Communication

### EDUCATION

#### EDUCATION<sup>1</sup>

- Arts • Business • Fine Art
- Music • Science

### ENGINEERING

#### AEROSPACE

- Arts • Commerce • Laws
- Science

#### CHEMICAL

- Arts • Commerce
- Biomedical Science • Laws
- Pharmaceutical Science
- Science

#### CIVIL

- Architectural Design • Arts
- Biomedical Science
- Commerce • Laws • Science

#### ELECTRICAL AND COMPUTER SYSTEMS

- Arts • Biomedical Science
- Commerce • Computer Science • Information Technology • Laws • Science

#### ENVIRONMENTAL

- Arts • Biomedical Science
- Commerce • Science

#### MATERIALS

- Arts • Commerce • Laws
- Biomedical Science • Science

#### MECHANICAL

- Arts • Biomedical Science
- Commerce • Design • Laws
- Science

#### ROBOTICS AND MECHATRONICS

- Arts • Commerce • Computer Science • Information Technology • Science

#### SOFTWARE

- Arts • Commerce • Computer Science • Information Technology • Science

### INFORMATION TECHNOLOGY

#### COMPUTER SCIENCE

- Commerce • Engineering<sup>1</sup>
- Laws • Science

#### INFORMATION TECHNOLOGY

- Arts • Business • Commerce
- Criminology • Design
- Engineering<sup>1</sup> • Fine Art
- Global Studies • Laws
- Science

### LAWS

#### LAWS

- Arts • Biomedical Science
- Commerce
- Computer Science
- Criminology • Engineering<sup>1</sup>
- Global Studies
- Information Technology
- International Relations
- Music • Politics, Philosophy and Economics • Psychology
- Science

### MEDICINE, NURSING AND HEALTH SCIENCES

#### BIOMEDICAL SCIENCE

- Commerce • Engineering<sup>1</sup>
- Laws • Science

#### HEALTH SCIENCES

- Arts

#### MEDICINE

- Bachelor of Medical Science and Doctor of Medicine

#### NURSING

- Nursing and Midwifery

### PHARMACY AND PHARMACEUTICAL SCIENCES

#### PHARMACY

- Pharmacy (Master)

#### PHARMACEUTICAL SCIENCE

- Engineering<sup>1</sup>

### SCIENCE

#### SCIENCE

- Arts • Biomedical Science
- Commerce • Computer Science • Education<sup>1</sup>
- Engineering<sup>1</sup> • Global Studies
- Information Technology
- Laws • Music • Psychology

[CLICK HERE](#)  
to view our sample course maps online

[CLICK HERE](#)  
to access our list of double degrees online

<sup>1</sup> This is only available with select specialisations.

## ART, DESIGN AND ARCHITECTURE

At Monash Art, Design and Architecture, you'll thrive in a creative community that allows you to take risks and break new ground.

Our degrees are all specialist courses, so your electives enable you to enhance and customise your studies to build your capabilities in specific areas and interests. We also offer double degrees where you can further expand your knowledge and skills.

### INTERNSHIPS AND OVERSEAS EXPERIENCES

We offer focused electives that provide you with opportunities for internships and placements within your field of practice, as well as the opportunity to collaborate with practitioners across disciplines, and even the chance to study at our international campus in Prato, Italy.

### FACILITIES

World-class studios and facilities from glass and automotive clay modelling to 3D printing and robotic manufacturing.

**CLICK HERE**  
FOR FULL DETAILS OF OUR  
UNDERGRADUATE COURSE  
OFFERING

### Bachelor of Architectural Design

**COURSE CODE:** F2001 **CRICOS CODE:** 059372G

**LOCATION** CAULFIELD  
**DURATION** 3 YEARS  
**INTAKE** FEBRUARY, JULY  
**FEES<sup>1</sup>** A\$48,400

- ACCELERATED MASTER'S PATHWAY
- PROFESSIONALLY ACCREDITED

#### DOUBLE DEGREE:

- Engineering (Honours)<sup>3</sup>

#### PREREQUISITE SUBJECT LEVELS and assumed knowledge

**PREREQUISITE:** English level 1  
assumed knowledge: None

For further information,  
refer to pages 38-39.

**ENGLISH TEST LEVEL<sup>2</sup>**  
**LEVEL A** (refer to page 41)

### Bachelor of Architectural Design and Master of Architecture

**COURSE CODE:** F6003 **CRICOS CODE:** 090745B

**LOCATION** CAULFIELD  
**DURATION** 5 YEARS  
**INTAKE** FEBRUARY  
**FEES<sup>1</sup>** A\$47,500

- PROFESSIONALLY ACCREDITED

#### PREREQUISITE SUBJECT LEVELS and assumed knowledge

**PREREQUISITE:** English level 1  
assumed knowledge: None

For further information,  
refer to pages 38-39.

**ENGLISH TEST LEVEL<sup>2</sup>**  
**LEVEL A** (refer to page 41)

### Bachelor of Design

**COURSE CODE:** F2010 **CRICOS CODE:** 085345E

The degree you're awarded will reflect your chosen specialisation

**LOCATION** CAULFIELD  
**DURATION** 3 YEARS  
**INTAKE** FEBRUARY, JULY  
**FEES<sup>1</sup>** A\$39,400

#### DOUBLE DEGREES:

- Engineering (Honours)<sup>3</sup>
- Information Technology
- Media Communication

#### PREREQUISITE SUBJECT LEVELS and assumed knowledge

**PREREQUISITE:** English level 1  
assumed knowledge: None

For further information,  
refer to pages 38-39.

**ENGLISH TEST LEVEL<sup>2</sup>**  
**LEVEL A** (refer to page 41)

#### SPECIALISATIONS

- Communication design
- Industrial design
- Spatial design
- Collaborative design

### Bachelor of Fine Art

**FINE ART (FA): COURSE CODE:** F20031 **CRICOS CODE:** 075112E

**ART HISTORY AND CURATING (AHC): COURSE CODE:** F20033 **CRICOS CODE:** 085529G

**LOCATION** CAULFIELD  
**DURATION** 3 YEARS  
**INTAKE** FEBRUARY, JULY  
**FEES<sup>1</sup>** A\$38,100 – FA  
A\$38,400 – AHC

- ADDITIONAL REQUIREMENTS

#### DOUBLE DEGREES:

##### Fine arts:

- Arts
- Business
- Education (Honours)<sup>3</sup>
- Information Technology
- Media Communication

##### Art history and curating:

- Arts
- Business
- Media Communication

#### PREREQUISITE SUBJECT LEVELS and assumed knowledge

**PREREQUISITE:** English level 1  
assumed knowledge: None

For further information,  
refer to pages 38-39.

**ENGLISH TEST LEVEL<sup>2</sup>**  
**LEVEL A** (refer to page 41)

#### SPECIALISATIONS

- Art history and curating
- Fine art

COUNTRY/REGION	INTERNATIONAL QUALIFICATION	ENTRY SCORE				
		ARCHITECTURAL DESIGN	ARCHITECTURAL DESIGN/ MASTER OF ARCHITECTURE	DESIGN	FINE ART	
					FINE ART	ART HISTORY AND CURATING
	<b>2025 ATAR for international students</b>	<b>75</b>		<b>70</b>		<b>80</b>
Australia	UNSW Foundation Studies	7		6.5		7.5
	University of Melbourne, Trinity College Foundation Studies	72%		67%		77%
	<b>Monash College</b>					
	Monash University Foundation Year (commencing MU FY in 2025)	76.25%		63.75%		63.75%
	Monash College Diploma Part 2 <sup>4</sup>	60%		50%		NA
Britain – global	GCE A Levels	8		7		9
Canada	Ontario Secondary School Diploma – Grade 12	78.50%		75.40%		81.60%
China	Gaokao	65%		60%		65%
Global	International Baccalaureate (IB) Diploma Programme	26		25	Successful completion required	28
Hong Kong	Hong Kong Diploma of Secondary Education	17		16		18
India	All India Senior School Certificate	70%		66%		75%
	Indian School Certificate Examination	65%		60%		70%
Indonesia	SMA3 – 10-point scale (6 pass)	7.5		7.2		7.9
Malaysia	STPM	7.9		7.3	8.5	
	UEC	5		6	4.2	
Republic of Korea	College Scholastic Ability Test	310		300	320	
	High School Diploma	72%		67%	77%	
USA – global	Advanced Placement	6		6	7	
	SAT (Total score out of 1600)	1160		1120	1190	
Vietnam	High School Diploma	8.14		8	8.28	

<sup>1</sup> 2024 quoted fees, in Australian dollars and are subject to change. Fees are per 48 credit points – a standard full-time course load for a year.

<sup>2</sup> This is only applicable if you have not satisfied the English requirement; you're required to complete a Monash-approved English test such as IELTS (Academic), Internet Based TOEFL or Pearson Test of English (Academic). Other English tests may also be accepted and are assessed when you apply to Monash.

<sup>3</sup> Only available with select specialisations.

<sup>4</sup> The Monash College Diploma Part 1 and 2 entry requirements published in this guide are for students commencing their undergraduate destination degree in 2026 and are applicable to specific Diploma programs only, [monashcollege.edu.au/courses/diplomas](https://monashcollege.edu.au/courses/diplomas)

For full course details visit our website, [monash.edu/study](https://monash.edu/study)



## ARTS, HUMANITIES, SOCIAL SCIENCES AND PERFORMING ARTS

With both specialist and comprehensive courses available, Monash Arts allows you to specify or broaden your studies to suit your interests. Monash also offers one of the largest double degree offerings in Australia, and this is especially evident at Monash Arts with 40 double degree combinations so you can expand your interests even further.

### ACCELERATED MASTER'S

For high-achieving students, you can graduate with a bachelor and master's degree in only four<sup>1</sup> years, in one of the following programs:

- Applied Linguistics
- Bioethics
- Communications and Media Studies
- Cultural and Creative Industries
- International Development Practice
- International Relations
- International Relations and Journalism double master's<sup>1</sup>
- International Sustainable Tourism Management
- Interpreting and Translation Studies
- Journalism
- Public Policy
- Strategic Communications Management.

### WORLD-CLASS FACILITIES

From the high-tech, multi-million dollar Monash Media Lab, to the collaborative Learning and Teaching building and our inspiring and comfortable libraries providing resources, spaces and technologies, Monash's facilities will make your learning experience fun, interactive and engaging.

### SCHOLARSHIPS

We want as many bright minds as possible to benefit from a Monash education. Which is why we offer one of the most generous scholarship programs in the country. Find out how you can achieve your full potential and make your mark on the world by exploring your options at:

[monash.edu/scholarships](https://monash.edu/scholarships)

### INDUSTRY EXPERIENCE

Monash Arts offers:

- Internationalised and industry connected curriculum
- Internships and industry projects
- Study tours in Australia and overseas
- Mentoring and leaderships programs.

<sup>1</sup> The duration will be longer for both the International Relations and Journalism double master's (5 years) and the Interpreting and translation (4.5 years) double master's degrees.



[CLICK HERE](#)  
FOR FULL DETAILS OF OUR  
UNDERGRADUATE COURSE  
OFFERING

### Bachelor of Arts

COURSE CODE: A2000 CRICOS CODE: 075404D

LOCATION **CAULFIELD, CLAYTON**

DURATION **3 YEARS**

INTAKE **FEBRUARY, JULY**

FEES<sup>1</sup> **A\$39,000**

INDUSTRY EXPERIENCE

ACCELERATED MASTER'S PATHWAY

#### DOUBLE DEGREES:

- Business
- Commerce
- Criminology
- Education (Honours)<sup>4</sup>
- Engineering (Honours)<sup>4</sup>
- Fine Art
- Global Studies
- Health Sciences
- Information Technology
- International Business
- Laws (Honours)
- Marketing
- Media Communication
- Music
- Politics, Philosophy and Economics
- Science

#### PREREQUISITE SUBJECT LEVELS and assumed knowledge<sup>2</sup>

PREREQUISITE: English level 1

assumed knowledge: None

For further information, refer to pages 38-39.

ENGLISH TEST LEVEL<sup>3</sup>  
**LEVEL A** (refer to page 41)

#### MAJOR ▲ MINOR

Anthropology ■ ▲  
Archaeology and ancient history ■ ▲  
Behavioural studies ▲  
Bioethics ▲  
Chinese studies ■ ▲  
Communications and media studies ■ ▲  
Criminology ■ ▲  
Critical performance studies ▲  
Economics ■ ▲  
European languages<sup>5</sup>  
(French, German, Italian, and Spanish and Latin American studies) ■ ▲

Film and screen studies ■ ▲  
Gender studies ■ ▲  
Global Asia ■ ▲  
Health humanities ■ ▲  
History ■ ▲  
Holocaust and genocide studies ▲  
Human geography ■ ▲  
Human rights ■ ▲  
Indigenous cultures and histories ■ ▲  
Indonesian studies ■ ▲  
International relations ■ ▲

Japanese studies ■ ▲  
Jewish studies ▲  
Journalism ■ ▲  
Korean studies ■ ▲  
Linguistics and English language ■ ▲  
Literary studies ■ ▲  
Music ■ ▲  
Philosophy ■ ▲  
Politics ■ ▲  
Psychology ■ ▲  
Sociology ■ ▲



**Bachelor of Criminology**

COURSE CODE: A2008 CRICOS CODE: 096756F

LOCATION **CLAYTON**  
DURATION **3 YEARS**  
INTAKE **FEBRUARY, JULY**  
FEES\* **A\$39,000**

- INDUSTRY EXPERIENCE
- ACCELERATED MASTER'S PROGRAM

**DOUBLE DEGREES:**

- Arts
- Information Technology
- Laws (Honours)

**PREREQUISITE SUBJECT LEVELS and assumed knowledge<sup>2</sup>**

**PREREQUISITE:** English level 1  
assumed knowledge: None

For further information, refer to pages 38-39.

**ENGLISH TEST LEVEL<sup>3</sup>**  
**LEVEL A** (refer to page 41)

**Bachelor of Global Studies**

COURSE CODE: A2001 CRICOS CODE: 083203B

LOCATION **CLAYTON**  
DURATION **3 YEARS**  
INTAKE **FEBRUARY, JULY**  
FEES\* **A\$39,000**

- INDUSTRY EXPERIENCE
- ACCELERATED MASTER'S PROGRAM

**DOUBLE DEGREES:**

- Arts
- Commerce
- Information Technology
- Laws (Honours)
- Science

**PREREQUISITE SUBJECT LEVELS and assumed knowledge<sup>2</sup>**

**PREREQUISITE:** English level 1  
assumed knowledge: None

For further information, refer to pages 38-39.

**ENGLISH TEST LEVEL<sup>3</sup>**  
**LEVEL A** (refer to page 41)

**SPECIALISATIONS**

- Human rights
- Intercultural studies
- International relations

**Bachelor of International Relations**

COURSE CODE: A2020 CRICOS CODE: 114243M

LOCATION **CLAYTON**  
DURATION **3 YEARS**  
INTAKE **FEBRUARY, JULY**  
FEES\* **A\$39,000**

- INDUSTRY EXPERIENCE
- ACCELERATED MASTER'S PROGRAM

**PREREQUISITE SUBJECT LEVELS and assumed knowledge<sup>2</sup>**

**PREREQUISITE:** English level 1  
assumed knowledge: None

For further information, refer to pages 38-39.

**ENGLISH TEST LEVEL<sup>3</sup>**  
**LEVEL A** (refer to page 41)

**Bachelor of Media Communication**

COURSE CODE: A2002 CRICOS CODE: 093854F

LOCATION **CAULFIELD**  
DURATION **3 YEARS**  
INTAKE **FEBRUARY, JULY**  
FEES\* **A\$39,000**

- INDUSTRY EXPERIENCE
- ACCELERATED MASTER'S PROGRAM

**DOUBLE DEGREES:**

- Arts
- Business
- Design
- Fine Art
- Marketing

**PREREQUISITE SUBJECT LEVELS and assumed knowledge<sup>2</sup>**

**PREREQUISITE:** English level 1  
assumed knowledge: None

For further information, refer to pages 38-39.

**ENGLISH TEST LEVEL<sup>3</sup>**  
**LEVEL A** (refer to page 41)

**SPECIALISATIONS**

- Journalism
- Media
- Public relations
- Screen

**Bachelor of Music**

COURSE CODE: A2003 CRICOS CODE: 017113G

LOCATION **CLAYTON**  
DURATION **3 YEARS**  
INTAKE **FEBRUARY, JULY**  
FEES\* **A\$38,700**

- ADDITIONAL REQUIREMENTS
- INDUSTRY EXPERIENCE
- ACCELERATED MASTER'S PROGRAM

**DOUBLE DEGREES:**

- Arts
- Commerce
- Education (Honours)<sup>4</sup>
- Laws (Honours)
- Science

**PREREQUISITE SUBJECT LEVELS and assumed knowledge<sup>2</sup>**

**PREREQUISITE:** English level 1  
assumed knowledge: None

For further information, refer to pages 38-39.

**ENGLISH TEST LEVEL<sup>3</sup>**  
**LEVEL A** (refer to page 41)

**SPECIALISATIONS**

- Composition and music technology
- Music performance (classical or jazz and improvisation)
- Popular music

**Bachelor of Politics, Philosophy and Economics**

COURSE CODE: A2010 CRICOS CODE: 0100405

LOCATION **CLAYTON**  
DURATION **3 YEARS**  
INTAKE **FEBRUARY, JULY**  
FEES\* **A\$44,400**

- INDUSTRY EXPERIENCE
- ACCELERATED MASTER'S PROGRAM

**DOUBLE DEGREES:**

- Arts
- Commerce
- Laws (Honours)

**PREREQUISITE SUBJECT LEVELS and assumed knowledge<sup>2</sup>**

**PREREQUISITE:** English level 1  
assumed knowledge: Maths level 2

For further information, refer to pages 38-39.

**ENGLISH TEST LEVEL<sup>3</sup>**  
**LEVEL A** (refer to page 41)

**SPECIALISATIONS**

- Economic analysis
- Philosophy
- Politics and governance

COUNTRY/ REGION	INTERNATIONAL QUALIFICATION	ENTRY SCORE						
		ARTS	CRIMINOLOGY	GLOBAL STUDIES	INTERNATIONAL RELATIONS	MEDIA COMMUNICATION	MUSIC	POLITICS, PHILOSOPHY AND ECONOMICS
Australia	2025 ATAR for international students	80	80	85	80	80	70	90
	UNSW Foundation Studies	7.5	7.5	8	7.5	7.5	6.5	8.5
	University of Melbourne, Trinity College Foundation Studies	77%	77%	81%	77%	77%	67%	86%
	<b>Monash College</b>							
	Monash University Foundation Year (commencing MUFY in 2025)	67.50% 72.50%	72.50%	74.25%	72.50%	72.50%	63.75%	74.25%
	Monash College Diploma Part 2 <sup>6</sup>	55%	55%	60%	55%	55%	55%	60%
Britain – global	GCE A Levels	9	9	10	9	9	7	12
Canada	Ontario Secondary School Diploma – Grade 12	81.60%	81.60%	84.80%	81.60%	81.60%	75.40%	87.90%
China	Gaokao	65%	65%	70%	65%	65%	60%	70%
Global	International Baccalaureate (IB) Diploma Programme	28	28	30	28	28	25	33
Hong Kong	Hong Kong Diploma of Secondary Education	18	18	19	18	18	16	21
India	All India Senior School Certificate	75%	75%	80%	75%	75%	66%	83%
	Indian School Certificate Examination	70%	70%	75%	70%	70%	60%	77%
Indonesia	SMA3 – 10-point scale (6 pass)	7.9	7.9	8.1	7.9	7.9	7.2	8.8
Malaysia	STPM	8.5	8.5	9.1	8.5	8.5	7.3	9.7
	UEC	4.2	4.2	3.4	4.2	4.2	6	2.6
Republic of Korea	College Scholastic Ability Test	320	320	340	320	320	300	350
	High School Diploma	77%	77%	81%	77%	77%	67%	86%
USA – global	Advanced Placement	7	7	7	7	7	6	8
	SAT (Total score out of 1600)	1190	1190	1240	1190	1190	1120	1290
Vietnam	High School Diploma	8.28	8.28	8.42	8.28	8.28	8	8.56

<sup>1</sup> 2024 quoted fees, in Australian dollars and are subject to change. Fees are per 48 credit points – a standard full-time course load for a year.

<sup>2</sup> If you have completed an Australian Year 12 or IB Diploma Programme you must satisfy the maths and/or science prerequisite level requirements specified on page 39. If you have completed another international senior secondary qualification with maths and/or science, see page 39 for full details regarding assumed knowledge.

<sup>3</sup> This is only applicable if you have not satisfied the English requirement; you're required to complete a Monash-approved English test such as IELTS (Academic), Internet Based TOEFL or Pearson Test of English (Academic). Other English tests may also be accepted and are assessed when you apply to Monash.

<sup>4</sup> This is only available with select specialisations.

<sup>5</sup> This is also available as an extended major.

<sup>6</sup> The Monash College Diploma Part 1 and 2 entry requirements published in this guide are for students commencing their undergraduate destination degree in 2026 and are applicable to specific Diploma programs only, [monashcollege.edu.au/courses/diplomas](https://monashcollege.edu.au/courses/diplomas)

For full course details visit our website, [monash.edu/study](https://monash.edu/study)



# BUSINESS AND COMMERCE



Monash Business School is Australia's largest business school and part of Monash University, which is ranked in the top 50 in the world.

Our degrees are recognised throughout the world, backed by our 'triple accreditation' with global accrediting bodies.

This accreditation is held by only 1% of business schools worldwide and means your degree meets the highest possible educational standards.

## DOUBLE DEGREES

We stand out as an educational leader in Australia with our extensive range of double degrees.

Increase your future job prospects by combining your business studies with other areas of interest, including law, engineering, arts, education.

A double degree in business is a great way to expand your employability.

## INDUSTRY EXPERIENCE

Gain practical workplace experience through internships and industry placements, while earning academic credit towards your degree.

You'll have opportunities to engage with influential employers, collaborate with peers on industry projects, and participate in networking events.

Access our popular mentoring programs, or take part in volunteering opportunities. All of these experiences are designed to enhance your future career success.



[CLICK HERE FOR FULL DETAILS OF OUR UNDERGRADUATE COURSE OFFERING](#)

## Bachelor of Accounting

COURSE CODE: B2029 CRICOS CODE: 097256G

LOCATION **CAULFIELD**  
DURATION **3 YEARS**  
INTAKE **FEBRUARY, JULY**  
FEES' **A\$52,200**

**DOUBLE DEGREE:**  
• Business

### PREREQUISITE SUBJECT LEVELS and assumed knowledge<sup>2</sup>

**PREREQUISITE:** English level 1  
**assumed knowledge:** Maths level 2

For further information, refer to pages 38-39.

**ENGLISH TEST LEVEL<sup>3</sup>**  
**LEVEL A** (refer to page 41)

## Bachelor of Actuarial Science

COURSE CODE: B2033 CRICOS CODE: 097257F

LOCATION **CLAYTON**  
DURATION **3 YEARS**  
INTAKE **FEBRUARY, JULY**  
FEES' **A\$52,200**

**DOUBLE DEGREE:**  
• Commerce

### PREREQUISITE SUBJECT LEVELS and assumed knowledge<sup>2</sup>

**PREREQUISITE:** English level 1  
**assumed knowledge:** Maths level 3

For further information, refer to pages 38-39.

**ENGLISH TEST LEVEL<sup>3</sup>**  
**LEVEL A** (refer to page 41)

### SPECIALISATIONS

- Actuarial studies
- Actuarial analytics

## Bachelor of Actuarial Science and Master of Actuarial Studies

COURSE CODE: B6060 CRICOS CODE: 113701J

LOCATION **CLAYTON**  
DURATION **4 YEARS**  
INTAKE **FEBRUARY, JULY**  
FEES' **A\$52,200**

### PREREQUISITE SUBJECT LEVELS and assumed knowledge<sup>2</sup>

**PREREQUISITE:** English level 1  
**assumed knowledge:** Maths level 3

For further information, refer to pages 38-39.

**ENGLISH TEST LEVEL<sup>3</sup>**  
**LEVEL A** (refer to page 41)

### SPECIALISATIONS

- Actuarial studies
- Actuarial analytics

## Bachelor of Banking and Finance

COURSE CODE: B2042 CRICOS CODE: 084684E

LOCATION **CAULFIELD**  
DURATION **3 YEARS**  
INTAKE **FEBRUARY, JULY**  
FEES' **A\$52,200**

**DOUBLE DEGREE:**  
• Business

### PREREQUISITE SUBJECT LEVELS and assumed knowledge<sup>2</sup>

**PREREQUISITE:** English level 1  
**assumed knowledge:** Maths level 2

For further information, refer to pages 38-39.

**ENGLISH TEST LEVEL<sup>3</sup>**  
**LEVEL A** (refer to page 41)

## Bachelor of Business

COURSE CODE: B2000 CRICOS CODE: 056414D

LOCATION **CAULFIELD**  
DURATION **3 YEARS**  
INTAKE **FEBRUARY AND JULY**  
FEES' **A\$52,200**

PROFESSIONALLY ACCREDITED

### DOUBLE DEGREES:

- Accounting
- Arts
- Banking and Finance
- Design
- Education (Honours)<sup>4</sup>
- Fine Art
- Information Technology
- International Business
- Marketing
- Media Communication

### PREREQUISITE SUBJECT LEVELS and assumed knowledge<sup>2</sup>

**PREREQUISITE:** English level 1  
**assumed knowledge:** Maths level 2

For further information, refer to pages 38-39.

**ENGLISH TEST LEVEL<sup>3</sup>**  
**LEVEL A** (refer to page 41)

### MAJOR ▲ MINOR

- |                                       |                                     |   |
|---------------------------------------|-------------------------------------|---|
| Accounting ■ ▲                        | Business studies ■                  | International business ■ ▲                    |
| Banking and finance ■ ▲               | Economics and business strategy ■ ▲ | Marketing ■ ▲                                 |
| Business analytics and statistics ■ ▲ | Financial econometrics ■            | Sustainability and responsible management ■ ▲ |
| Business law ■ ▲                      | Human resource management ■ ▲       | Taxation ■ ▲                                  |
| Business management ■ ▲               |                                     |   |



### Bachelor of Business Administration

COURSE CODE: B2007 CRICOS CODE: 079046M

LOCATION **PENINSULA**  
DURATION **3 YEARS**  
INTAKE **FEBRUARY AND JULY**  
FEES<sup>1</sup> **A\$52,200**

PROFESSIONALLY ACCREDITED

#### PREREQUISITE SUBJECT LEVELS and assumed knowledge<sup>2</sup>

**PREREQUISITE:** English level 1 For further information, refer to pages 38-39.  
**assumed knowledge:** Maths level 1

#### MAJOR ▲ MINOR

Accountancy ■ ▲  
Business Administration studies ■  
Econometrics and business decisions ▲  
Finance and economics ■  
Management practice ■ ▲  
Marketing and communications ■ ▲

#### ENGLISH TEST LEVEL<sup>3</sup>

**LEVEL A** (refer to page 41)

### Bachelor of Commerce

COURSE CODE: B2001 CRICOS CODE: 013382G

LOCATION **CLAYTON**  
DURATION **3 YEARS**  
INTAKE **FEBRUARY, JULY**  
FEES<sup>1</sup> **A\$52,200**

#### DOUBLE DEGREES:

- Actuarial Science
- Arts
- Biomedical Science
- Computer Science
- Economics
- Finance
- Engineering (Honours)<sup>4</sup>
- Global Studies
- Information Technology
- Laws (Honours)
- Music
- Politics, Philosophy and Economics
- Science

#### PREREQUISITE SUBJECT LEVELS and assumed knowledge<sup>2</sup>

**PREREQUISITE:** English level 1 For further information, refer to pages 38-39.  
**assumed knowledge:** Maths level 3

#### MAJOR ▲ MINOR

Accounting ■ ▲  
Actuarial studies ■ ▲  
Behavioural commerce ■ ▲  
Business analytics ■ ▲  
Business law ▲  
Econometrics ■ ▲  
Economics ■ ▲  
Finance ■ ▲  
Management studies ■ ▲  
Marketing science ■ ▲  
Mathematical foundations of econometrics ■  
Sustainability and responsible management ■ ▲

#### ENGLISH TEST LEVEL<sup>3</sup>

**LEVEL A** (refer to page 41)

### Bachelor of Digital Business

COURSE CODE: B2049 CRICOS CODE: 114241B

LOCATION **CAULFIELD**  
DURATION **3 YEARS**  
INTAKE **FEBRUARY**  
FEES<sup>1</sup> **TBC**

#### PREREQUISITE SUBJECT LEVELS and assumed knowledge<sup>2</sup>

**PREREQUISITE:** English level 1 For further information, refer to pages 38-39.  
**assumed knowledge:** Maths level 2

#### ENGLISH TEST LEVEL<sup>3</sup>

**LEVEL A** (refer to page 41)

### Bachelor of Economics

COURSE CODE: B2031 CRICOS CODE: 001447E

LOCATION **CLAYTON**  
DURATION **3 YEARS**  
INTAKE **FEBRUARY, JULY**  
FEES<sup>1</sup> **A\$52,200**

ACCELERATED MASTER'S PROGRAM

#### DOUBLE DEGREES:

- Commerce

#### PREREQUISITE SUBJECTS LEVELS and assumed knowledge<sup>2</sup>

**PREREQUISITE:** English level 1 For further information, refer to pages 38-39.  
**assumed knowledge:** Maths level 3

#### SPECIALISATIONS

- Business analytics for economics
- Economics and economic policy
- Macroeconomics and financial markets
- Mathematical economics and econometrics.

#### ENGLISH TEST LEVEL<sup>3</sup>

**LEVEL A** (refer to page 41)

### Bachelor of Finance

COURSE CODE: B2034 CRICOS CODE: 084687B

LOCATION **CLAYTON**  
DURATION **3 YEARS**  
INTAKE **FEBRUARY, JULY**  
FEES<sup>1</sup> **A\$52,200**

#### DOUBLE DEGREE:

- Commerce

#### PREREQUISITE SUBJECT LEVELS and assumed knowledge<sup>2</sup>

**PREREQUISITE:** English level 1 For further information, refer to pages 38-39.  
**assumed knowledge:** Maths level 3

#### ENGLISH TEST LEVEL<sup>3</sup>

**LEVEL A** (refer to page 41)

### Bachelor of International Business

COURSE CODE: B2005 CRICOS CODE: 103001J

LOCATION **CAULFIELD**  
DURATION **3 YEARS**  
INTAKE **FEBRUARY, JULY**  
FEES<sup>1</sup> **A\$52,200**

#### DOUBLE DEGREES:

- Arts
- Business

#### PREREQUISITE SUBJECT LEVELS and assumed knowledge<sup>2</sup>

**PREREQUISITE:** English level 1 For further information, refer to pages 38-39.  
**assumed knowledge:** Maths level 2

#### ENGLISH TEST LEVEL<sup>3</sup>

**LEVEL A** (refer to page 41)

### Bachelor of Marketing

COURSE CODE: B2036 CRICOS CODE: 084685D

LOCATION **CAULFIELD**  
DURATION **3 YEARS**  
INTAKE **FEBRUARY AND JULY**  
FEES<sup>1</sup> **A\$52,200**

#### DOUBLE DEGREES:

- Arts
- Business
- Media Communication

#### PREREQUISITE SUBJECT LEVELS and assumed knowledge<sup>2</sup>

**PREREQUISITE:** English level 1 For further information, refer to pages 38-39.  
**assumed knowledge:** Maths level 2

#### ENGLISH TEST LEVEL<sup>3</sup>

**LEVEL A** (refer to page 41)

COUNTRY/REGION	INTERNATIONAL QUALIFICATION	ENTRY SCORE												
		ACCOUNTING	ACTUARIAL SCIENCE	ACTUARIAL SCIENCE AND ACTUARIAL STUDIES	BANKING AND FINANCE	BUSINESS	BUSINESS ADMINISTRATION	COMMERCE	DIGITAL BUSINESS	ECONOMICS	FINANCE	INTERNATIONAL BUSINESS	MARKETING	
Australia	2025 ATAR for international students	82.5	90	90	82.5	82.5	70	90	75	90	90	82.5	82.5	
	UNSW Foundation Studies	7.75	8.5	8.5	7.75	7.75	6.5	8.5	7	8.5	8.5	7.75	7.75	
	Melbourne University, Trinity College Foundation Studies	79%	86%	86%	79%	79%	67%	86%	72%	86%	86%	77%	79%	
	<b>Monash College</b>													
	Monash University Foundation Year	70%	76.25%	76.25%	70%	70%	60%	76.25%	70%	76.25%	76.25%	70%	70%	
	Monash College Diploma Part 2 <sup>5</sup>	60%	70%	70%	60%	60%	55%	70%	NA	70%	70%	60%	60%	
Britain – global	GCE A Levels	9.5	12	12	9.5	9.5	7	12	8	12	12	9.5	9.5	
Canada	Ontario Secondary School Diploma – Grade 12	83.20%	87.90%	87.90%	83.20%	83.20%	75.40%	87.90%	78.50%	87.90%	87.90%	83.20%	83.20%	
China	Gaokao	65%	70%	70%	65%	65%	60%	70%	65%	70%	70%	65%	65%	
Global	International Baccalaureate (IB) Diploma Programme	29	33	33	29	29	25	33	26	33	33	29	29	
Hong Kong	Hong Kong Diploma of Secondary Education	18	21	21	18	18	16	21	17	21	21	18	18	
India	All India Senior School Certificate	78.50%	83%	83%	78.50%	78.50%	66%	83%	70%	83%	83%	78.50%	78.50%	
	Indian School Certificate Examination	72.50%	77%	77%	72.50%	72.50%	60%	77%	65%	77%	77%	72.50%	72.50%	
Indonesia	SMA3, Indonesia – 10-point scale (6 pass)	8.0	8.8	8.8	8.0	8.0	7.2	8.8	7.5	8.8	8.8	8.0	8.0	
Malaysia	STPM, Malaysia	8.8	9.7	9.7	8.8	8.8	7.3	9.7	7.9	9.7	9.7	8.5	8.8	
	UEC, Malaysia	3.8	2.6	2.6	3.8	3.8	6	2.6	5	2.6	2.6	3.8	3.8	
Republic of Korea	College Scholastic Ability Test	330	350	350	330	330	300	350	310	350	350	330	330	
	High School Diploma, Republic of Korea	79%	86%	86%	79%	79%	67%	86%	72%	86%	86%	79%	79%	
USA – global	Advanced Placement	7	8	8	7	7	6	8	6	8	8	7	7	
	SAT (Total score out of 1600)	1220	1290	1290	1220	1220	1120	1290	1160	1290	1290	1220	1220	
Vietnam	High School Diploma	8.35	8.56	8.56	8.35	8.35	8	8.56	8.14	8.56	8.56	8.35	8.35	

1 2024 quoted fees, in Australian dollars and are subject to change. Fees are per 48 credit points – a standard full-time course load for a year. TBC – please consult our website or contact the faculty for more up-to-date information.

2 If you have completed an Australian Year 12 or IB Diploma Programme you must satisfy the maths and/or science prerequisite level requirements specified on page 39. If you have completed another international senior secondary qualification with maths and/or science, see page 39 for full details regarding assumed knowledge.

3 This is only applicable if you have not satisfied the English requirement; you're required to complete a Monash-approved English test such as IELTS (Academic), Internet Based TOEFL or Pearson Test of English (Academic). Other English tests may also be accepted and are assessed when you apply to Monash.

4 Only available with select specialisations.

5 The Monash College Diploma Part 1 and 2 entry requirements published in this guide are for students commencing their undergraduate destination degree in 2026 and are applicable to specific diploma programs only, [monashcollege.edu.au/courses/diplomas](https://monashcollege.edu.au/courses/diplomas)

For full course details visit our website, [monash.edu/study](https://monash.edu/study)



Join Australia's top-ranked Faculty of Education where you can choose from two distinct undergraduate pathways.

Pursue a career in teaching with our Bachelor of Education (Honours). When you graduate, you'll have the qualifications to be a registered school teacher or early childhood teacher in Australia.

Or you can drive change as a Learning Designer across a great variety of industries with the Bachelor of Learning Design and Technology.

**INDUSTRY EXPERIENCE**

You'll complete 80-90 days of professional experience during the Bachelor of Education (Honours), so you'll be able to apply your skills and knowledge as you learn them.

The Bachelor of Learning Design and Technology offers the opportunity to apply learning to real-life contexts through industry engagement.

**CAREER OUTCOMES**

Become an early childhood, primary or secondary school teacher or join the growing number of Learning Designers across the world in sectors such as EdTech, entertainment, HR and education.

SPECIALISATIONS		LOCATION
0-12 YEARS	Early Childhood and Primary Education	Peninsula
5-12 YEARS	Primary Education (studied as a single or double degree)	Peninsula
5-18 YEARS	Primary and Secondary Education	Clayton
	Primary and Secondary Health and Physical Education	Clayton
	Primary and Secondary Inclusive and Special Education	Peninsula
12-18 YEARS	Secondary Health and Physical Education	Peninsula
	Secondary Education (studied as a double degree)	Clayton

**CLICK HERE**  
FOR FULL DETAILS OF OUR  
UNDERGRADUATE COURSE OFFERING

**Bachelor of Education (Honours)**

COURSE CODE: D3001<sup>1</sup> CRICOS CODE: 082360G

The degree you're awarded will reflect your chosen specialisation

LOCATION **CLAYTON, PENINSULA**  
DURATION **4 YEARS**  
INTAKE **FEBRUARY**  
FEES<sup>2</sup> **A\$39,300**

- ADDITIONAL REQUIREMENTS
- PROFESSIONALLY ACCREDITED
- INDUSTRY EXPERIENCE

**DOUBLE DEGREES**

These are only available with the Primary or Secondary education specialisation.

- Primary education
- OR
- Secondary education
- +
  - Arts
  - Business
  - Fine Art
  - Music
  - Science

**PREREQUISITE SUBJECT LEVELS and assumed knowledge<sup>3</sup>**

**PREREQUISITE:** English level 1  
assumed knowledge: Maths level 1

For further information, refer to pages 38-39.

**ENGLISH TEST LEVEL<sup>4</sup>**

**LEVEL B** (refer to page 41)

**Bachelor of Learning Design and Technology**

COURSE CODE: D2003 CRICOS CODE: 115056F

LOCATION **CAULFIELD**  
DURATION **3 YEARS**  
INTAKE **FEBRUARY**  
FEES<sup>2</sup> **TBC**

- INDUSTRY EXPERIENCE

**PREREQUISITE SUBJECT LEVELS and assumed knowledge<sup>3</sup>**

**PREREQUISITE:** English level 1  
assumed knowledge: None

For further information, refer to pages 38-39.

**ENGLISH TEST LEVEL<sup>4</sup>**

**LEVEL A** (refer to page 41)

COUNTRY/REGION	INTERNATIONAL QUALIFICATION	ENTRY SCORE	
		EDUCATION (HONOURS)	LEARNING DESIGN AND TECHNOLOGY
Australia	2025 ATAR for international students	75	70
	UNSW Foundation Studies	7	6.5
	University of Melbourne, Trinity College Foundation Studies	72%	67%
	<b>Monash College</b>		
	Monash University Foundation Year (commencing MUFY in 2025)	70%	63.75%
	Monash College Diploma Part 2	NA	NA
Britain – global	GCE A Levels	8	7
Canada	Ontario Secondary School Diploma – Grade 12	78.50%	75.40%
China	Gaokao	65%	60%
Global	International Baccalaureate (IB) Diploma Programme	26	25
Hong Kong	Hong Kong Diploma of Secondary Education	17	16
India	All India Senior School Certificate	70%	66
	Indian School Certificate Examination	65%	60
Indonesia	SMA3 – 10-point scale (6 pass)	7.5	7.2
Malaysia	STPM	7.9	7.3
	UEC	5	6
Republic of Korea	College Scholastic Ability Test	310	300
	High School Diploma	72%	67%
USA – global	Advanced Placement	6	6
	SAT (Total score out of 1600)	1160	1120
Vietnam	High School Diploma	8.14	8

1 Each specialisation has its own course code. Please see our website for these details.  
 2 2024 quoted fees, in Australian dollars and are subject to change. Fees are per 48 credit points – a standard full-time course load for a year. TBC – please consult our website or contact the faculty for more up-to-date information.  
 3 If you have completed an Australian Year 12 or IB Diploma Programme you must satisfy the maths and/or science prerequisite level requirements specified on page 39. If you have completed another international senior secondary qualification with maths and/or science, see page 39 for full details regarding assumed knowledge.  
 4 This is only applicable if you have not satisfied the English requirement; you're required to complete a Monash-approved English test such as IELTS (Academic), Internet Based TOEFL or Pearson Test of English (Academic). Other English tests may also be accepted and are assessed when you apply to Monash.

For full course details visit our website, [monash.edu/study](https://monash.edu/study)



## ENGINEERING

RANKED  
**NO.1** IN AUSTRALIA  
FOR ENGINEERING<sup>1</sup>

Monash Engineering sets you on the path to transform the future. As an engineer, you'll develop solutions for global challenges, advancing sustainable technologies and innovations to save lives and benefit society.

You'll study a common first year so you can get a taste of specialisations before deciding which to pursue from your second year.

## ENGINEERING SPECIALISATIONS

Choose from the following specialised fields:

- Aerospace engineering
- Biomedical engineering<sup>2</sup>
- Chemical engineering
- Civil engineering
- Electrical and computer systems engineering
- Environmental engineering
- Materials engineering
- Mechanical engineering
- Robotics and mechatronics engineering
- Software engineering.

You can also complement your studies with a minor from different and emerging engineering fields, including artificial intelligence, sustainability, renewable energy and smart manufacturing<sup>3</sup>.

## INDUSTRY EXPERIENCE

You can connect with industry through:

- Co-operative Education Program – a paid internship where you'll gain industry experience
- Industry Innovation Program (IIP) – develop your skills solving real problems with industry
- Career Ready Series – build your employability skills
- Continuous Professional Development – professional practice requirements built into your studies
- Monash Industry Teams Initiative (MITI) – Students from multiple disciplines partner with Australian and global industry.

## ACCELERATED PATHWAY TO A MASTER'S DEGREE

Graduate with a bachelor's degree plus a specialised master's degree in just five years. If you're a high-achieving student, accelerate your studies and earn both degrees.



**CLICK HERE**  
FOR FULL DETAILS OF OUR  
UNDERGRADUATE COURSE OFFERING

## Bachelor of Engineering (Honours)

COURSE CODE: E3001 CRICOS CODE: 001722B

The degree you're awarded will reflect your chosen specialisation

LOCATION **CLAYTON**  
DURATION **4 YEARS**  
INTAKE **FEBRUARY, JULY**  
FEES<sup>4</sup> **AS\$3,200**

- PROFESSIONALLY ACCREDITED
- ACCELERATED MASTER'S PATHWAY<sup>5</sup>

DOUBLE DEGREES<sup>6</sup>:

- Architectural Design
- Arts
- Biomedical Science
- Commerce
- Computer Science
- Design
- Information Technology
- Laws (Honours)
- Pharmaceutical Science
- Science

PREREQUISITE SUBJECT LEVELS and assumed knowledge<sup>5</sup>

**PREREQUISITE:** English level 1  
**assumed knowledge:** Maths level 3 and Chemistry or Physics

For further information, refer to pages 38-39.

ENGLISH TEST LEVEL<sup>6</sup>

**LEVEL A** (refer to page 41)

## SPECIALISATIONS

- Aerospace engineering
- Biomedical engineering<sup>2</sup>
- Chemical engineering
- Civil engineering
- Electrical and computer systems engineering
- Environmental engineering
- Materials engineering
- Mechanical engineering
- Robotics and mechatronics engineering
- Software engineering

COUNTRY/REGION	INTERNATIONAL QUALIFICATION	ENTRY SCORE	
		ENGINEERING (HONOURS)	ENGINEERING (HONOURS) / MASTER'S ACCELERATED PATHWAY
Australia	<b>2025 ATAR for international students</b>	<b>87.50</b>	<b>95</b>
	UNSW Foundation Studies	8.25	NA
	University of Melbourne, Trinity College Foundation Studies	83%	NA
	<b>Monash College</b>		
	Monash University Foundation Year (commencing MUFY in 2025)	76.25%	88.75%
	Monash College Diploma Part 2 <sup>7</sup>	60%	NA
Britain – global	GCE A Levels	11	14
Canada	Ontario Secondary School Diploma – Grade 12	86.30%	91%
China	Gaokao	75%	80%
Global	International Baccalaureate (IB) Diploma Programme	31	36
Hong Kong	Hong Kong Diploma of Secondary Education	20	23
India	All India Senior School Certificate	81%	85%
	Indian School Certificate Examination	76%	80%
Indonesia	SMA3 – 10-point scale (6 pass)	8.3	9
Malaysia	STPM	9.4	10.30
	UEC	3	1.8
Republic of Korea	College Scholastic Ability Test	345	365
	High School Diploma	83%	90%
USA – global	Advanced Placement	7	9
	SAT (Total score out of 1600)	1270	1360
Vietnam	High School Diploma	8.49	8.70

<sup>1</sup> Time Higher Education (THE) World University Rankings by subject, 2023.

<sup>2</sup> The common first year is not available for the Biomedical engineering specialisation. Apply directly to the Bachelor of Biomedical Engineering (Honours) if you intend to choose this specialisation.

<sup>3</sup> Engineering minors, double degrees and the accelerated master's pathway are only available with some engineering specialisations

<sup>4</sup> 2024 quoted fees, in Australian dollars and are subject to change. Fees are per 48 credit points – a standard full-time course load for a year.

<sup>5</sup> If you have completed an Australian Year 12 or IB Diploma Programme you must satisfy the maths and/or science prerequisite level requirements specified on page 39. If you have completed another international senior secondary qualification with maths and/or science, see page 39 for full details regarding assumed knowledge.

<sup>6</sup> This is only applicable if you have not satisfied the English requirement; you're required to complete a Monash-approved English test such as IELTS (Academic), Internet Based TOEFL or Pearson Test of English (Academic). Other English tests may also be accepted and are assessed when you apply to Monash.

<sup>7</sup> The Monash College Diploma Part 1 and 2 entry requirements published in this guide are for students commencing their undergraduate destination degree in 2026 and are applicable to specific Diploma programs only. [monashcollege.edu.au/courses/diplomas](https://monashcollege.edu.au/courses/diplomas)

For full course details visit our website, [monash.edu/study](https://monash.edu/study)



# INFORMATION TECHNOLOGY

**RANKED NO.1** IN AUSTRALIA AND 52 IN THE WORLD FOR COMPUTER SCIENCE<sup>1</sup>

Monash is one of the universities in the prestigious Group of Eight with a faculty dedicated to Information Technology. So you can rest assured that IT isn't a side interest to us – it's everything that we do.

Comprehensive and flexible, our undergraduate programs cover every major area of our field – giving you well-rounded and specialist expertise at the same time.

## FACILITIES

Our cutting-edge spaces are primarily located at Monash Clayton campus and they include our:

- Mixed Reality Studio
- Cybersecurity Studio
- Immersive Analytics Lab
- Makerspaces
- Human Interaction Lab
- 360-seat teaching space

Many of these are based in the Woodside Building for Technology and Design, one of the most efficient and innovative buildings of its kind powered by solar energy. We also have cutting-edge facilities at Caulfield campus, such as our SensiLab – the home of computational creativity.

## INDUSTRY EXPERIENCE

We give you plenty of opportunity to gain valuable practical experience, securing your employability in the job market. Our undergraduate courses provide:

- Industry-based Learning (IBL), or
- Industry Experience Studio Projects.

## SCHOLARSHIPS

All students who participate in the IBL program receive a generous scholarship of A\$19,000 per placement. We also offer a number of other scholarships to promote equity and excellence, such as our Women in Technology scholarship.

## PROFESSIONAL RECOGNITION



All our courses are accredited by the Australian Computer Society – the professional association for information and communications technology in Australia.

**CLICK HERE FOR FULL DETAILS OF OUR UNDERGRADUATE COURSE OFFERING**

1 Times Higher Education rankings by Subject, 2024.  
 2 2024 quoted fees, in Australian dollars and are subject to change. Fees are per 48 credit points – a standard full-time course load for a year.  
 3 If you have completed an Australian Year 12 or IB Diploma Programme you must satisfy the maths and/or science prerequisite level requirements specified on page 39. If you have completed another international senior secondary qualification with maths and/or science, see page 39 for full details regarding assumed knowledge.  
 4 This is only applicable if you have not satisfied the English requirement; you're required to complete a Monash-approved English test such as IELTS (Academic), Internet Based TOEFL or Pearson Test of English (Academic). Other English tests may also be accepted and are assessed when you apply to Monash.  
 5 Only available with select Engineering specialisations.  
 6 The Monash College Diploma Part 1 and 2 entry requirements published in this guide are for students commencing their undergraduate destination degree in 2026 and are applicable to specific Diploma programs only, [monashcollege.edu.au/courses/diplomas](https://monashcollege.edu.au/courses/diplomas)

For full course details visit our website, [monash.edu/study](https://monash.edu/study)

## Bachelor of Computer Science

COURSE CODE: C2001 CRICOS CODE: 079336A

The degree you're awarded will reflect your chosen specialisation

LOCATION **CLAYTON**  
 DURATION **3 YEARS**  
 INTAKE **FEBRUARY, JULY**  
 FEES<sup>2</sup> **A\$49,500**

PROFESSIONALLY ACCREDITED

### DOUBLE DEGREES:

- Commerce
- Engineering (Honours)<sup>5</sup>
- Laws (Honours)
- Science

### PREREQUISITE SUBJECT LEVELS and assumed knowledge<sup>3</sup>

**PREREQUISITE:** English level 1  
**assumed knowledge:** Maths level 3

For further information, refer to pages 38-39.

**ENGLISH TEST LEVEL<sup>4</sup> LEVEL A** (refer to page 41)

### SPECIALISATIONS

- Advanced computer science
- Data science

## Bachelor of Computer Science Advanced (Honours)

COURSE CODE: C3001 CRICOS CODE: 085350G

LOCATION **CLAYTON**  
 DURATION **4 YEARS**  
 INTAKE **FEBRUARY**  
 FEES<sup>2</sup> **A\$49,500**

PROFESSIONALLY ACCREDITED

### PREREQUISITE SUBJECT LEVELS and assumed knowledge<sup>3</sup>

**PREREQUISITE:** English level 1  
**assumed knowledge:** Maths level 3

For further information, refer to pages 38-39.

**ENGLISH TEST LEVEL<sup>4</sup> LEVEL A** (refer to page 41)

## Bachelor of Information Technology

COURSE CODE: C2000 CRICOS CODE: 085120M

LOCATION **CLAYTON**  
 DURATION **3 YEARS**  
 INTAKE **FEBRUARY, JULY**  
 FEES<sup>2</sup> **A\$49,500**

### DOUBLE DEGREES:

- Arts
- Business
- Commerce
- Criminology
- Design
- Engineering (Honours)<sup>5</sup>
- Fine Art
- Global Studies
- Laws (Honours)
- Science

### PREREQUISITE SUBJECT LEVELS and assumed knowledge<sup>3</sup>

**PREREQUISITE:** English level 1  
**assumed knowledge:** Maths level 1

For further information, refer to pages 38-39.

**ENGLISH TEST LEVEL<sup>4</sup> LEVEL A** (refer to page 41)

### MAJOR ▲ MINOR

- |                                  |                             |                           |
|----------------------------------|-----------------------------|---------------------------|
| 3D modelling and animation ▲     | Data science ▲              | Mobile apps development ▲ |
| Business information systems ■ ▲ | Games and immersive media ■ | Software development ■ ▲  |
| Computer science ▲               | Games design ▲              | Software engineering ▲    |
| Cybersecurity ■ ▲                | Games development ▲         | Web development ▲         |

COUNTRY/REGION	INTERNATIONAL QUALIFICATION	ENTRY SCORE		
		COMPUTER SCIENCE	COMPUTER SCIENCE ADVANCED (HONOURS)	INFORMATION TECHNOLOGY
Australia	<b>2025 ATAR for international students</b>	<b>80</b>	<b>90</b>	<b>75</b>
	UNSW Foundation Studies	7.5	NA	7
	University of Melbourne, Trinity College Foundation Studies	77%	NA	72%
	<b>Monash College</b>			
	Monash University Foundation Year (commencing MU FY in 2025)	70%	NA	70%
	Monash College Diploma Part 2 <sup>6</sup>	60%	NA	55%
Britain – global	GCE A Levels	9	12	8
Canada	Ontario Secondary School Diploma – Grade 12	81.60%	87.90%	78.50%
China	Gaokao	70%	75%	65%
Global	International Baccalaureate (IB) Diploma Programme	28	33	26
Hong Kong	Hong Kong Diploma of Secondary Education	18	21	17
India	All India Senior School Certificate	75%	83%	70%
	Indian School Certificate Examination	70%	77%	65%
Indonesia	SMA3 – 10-point scale (6 pass)	7.9	8.8	7.5
Malaysia	STPM	8.5	9.7	7.9
	UEC	4.2	2.6	5
Republic of Korea	College Scholastic Ability Test	320	350	310
	High School Diploma	77%	86%	72%
USA – global	Advanced Placement	7	8	6
	SAT (Total score out of 1600)	1190	1290	1160
Vietnam	High School Diploma	8.28	8.56	8.14



Monash Law is one of Australia's largest and most prestigious law schools.

We offer a range of undergraduate, postgraduate and research degrees and provide legal education and training to more than 3500 undergraduate and graduate students at any time.

### WORLD-CLASS FACILITIES

We have a broad teaching base, strong international links and an excellent reputation.

Our Clayton campus is the hub for our undergraduate law courses. Our state-of-the-art moot court provides a realistic courtroom setting for experiential learning about court proceedings and participating in moot competitions.

### INTERNATIONAL STUDY

You can include an international study program in your Monash Law degree to help you learn about different legal traditions and systems to prepare for a legal career in a global environment. The many options include student exchange, study abroad, and Monash Global Campus Intensives at our Malaysian and Italian locations.

### DOUBLE DEGREES

You can study the Bachelor of Laws (Honours) as a single degree or combine your law interest with another course and study a double degree. In a double degree, you undertake both qualifications simultaneously, enabling you to complete your degrees in a shorter time than if you took each degree separately and you will be awarded two Monash degrees.

### CLINICAL LEGAL GUARANTEE (Industry Experience)

Clinical legal education is an important way for students to understand and appreciate how theory comes to life as it is put into practice. You are guaranteed the opportunity to add real legal experience to your degree through a range of Clinical Legal Education practice subjects. You may choose a placement at the Monash Law Clinics, where you'll help people unable to access justice elsewhere, or an internship or in-house clinic with one of our many partner organisations.

### SCHOLARSHIPS

Monash offers any number of scholarships to eligible applicants. The Faculty of Law also offers a range of scholarships. Visit our website to learn more.

### CAREER OUTCOMES

Monash Law graduates pursue legal careers in national and international law firms and legal practices in large city centres and suburban and regional areas. They also provide advice as in-house legal counsel to corporate, government or social justice organisations in countries worldwide.

If you're not thinking of becoming a lawyer, Monash Law can help you embark on non-legal career paths such as:

- government and politics
- banking and finance
- business consultancy and management
- science and engineering
- environmental protection and development
- project management
- international organisations, such as the United Nations
- non-government organisations such as the Red Cross and Amnesty International.

COUNTRY/REGION	INTERNATIONAL QUALIFICATION	ENTRY SCORE
	<b>2025 ATAR for international students</b>	<b>95</b>
Australia	UNSW Foundation Studies	9
	University of Melbourne, Trinity College Foundation Studies	90%
	<b>Monash College</b>	
	Monash University Foundation Year (commencing MUJY in 2025)	85%
	Monash College Diploma Part 2 <sup>2</sup>	NA
Britain – global	GCE A Levels	13
Canada	Ontario Secondary School Diploma – Grade 12	91%
China	Gaokao	80%
Global	International Baccalaureate (IB) Diploma Programme	36
Hong Kong	Hong Kong Diploma of Secondary Education	23
India	All India Senior School Certificate	85%
	Indian School Certificate Examination	80%
Indonesia	SMA3 – 10-point scale (6 pass)	9
	STPM	10.3
Malaysia	UEC	1.8
	College Scholastic Ability Test	365
Republic of Korea	High School Diploma	90%
	Advanced Placement	9
USA	SAT (Total score out of 1600)	1360
	High School Diploma	8.7

### Bachelor of Laws (Honours)

COURSE CODE: L3001 CRICOS CODE: 080585G

LOCATION **CLAYTON**

DURATION **4 YEARS**

INTAKE **FEBRUARY, JULY**

FEES<sup>3</sup> **A\$48,700**

PROFESSIONALLY ACCREDITED

#### DOUBLE DEGREES:

- Arts
- Biomedical Science
- Commerce
- Computer Science
- Criminology
- Engineering (Honours)<sup>5</sup>
- Global Studies
- Information Technology
- Music
- Politics, Philosophy and Economics
- Science

#### PREREQUISITE SUBJECT LEVELS and assumed knowledge

**PREREQUISITE:** English level 2

assumed knowledge: None

For further information, refer to pages 38-39.

**ENGLISH TEST LEVEL<sup>4</sup>**  
**LEVEL C** (refer to page 41)

 **CLICK HERE FOR FULL DETAILS OF OUR UNDERGRADUATE COURSE OFFERING**

<sup>1</sup> Equal 40th in the world (QS World Rankings by subject, 2023).

<sup>2</sup> The Monash College Diploma Part 1 and 2 entry requirements published in this guide are for students commencing their undergraduate destination degree in 2026 and are applicable to specific Diploma programs only, [monashcollege.edu.au/courses/diplomas](https://monashcollege.edu.au/courses/diplomas)

<sup>3</sup> 2024 quoted fees, in Australian dollars and are subject to change. Fees are per 48 credit points – a standard full-time course load for a year.

<sup>4</sup> This is only applicable if you have not satisfied the English requirement; you're required to complete a Monash-approved English test such as IELTS (Academic), Internet Based TOEFL or Pearson Test of English (Academic). Other English tests may also be accepted and are assessed when you apply to Monash.

<sup>5</sup> Only available with select Engineering specialisations.

For full course details visit our website, [monash.edu/study](https://monash.edu/study)



## MEDICINE, NURSING AND HEALTH SCIENCES

If you have the passion, we have the opportunity.

In just over 60 years, Monash Medicine, Nursing and Health Sciences has become globally recognised for our quality education of over 50,000 doctors, nurses, and allied health professionals. As the University's largest research faculty, we have contributed to breakthroughs in crucial areas like IVF, Alzheimer's disease, cancer research, and infectious diseases. Our continued teaching excellence and research outcomes have cemented Monash's place as a world leader in medical and health sciences research and education.

### PROFESSIONAL ACCREDITATION

We offer industry-accredited entry-to-practice qualifications as direct-entry from high school for medicine, nursing and midwifery, occupational therapy, physiotherapy, paramedicine, and radiography and medical imaging.

### Key teaching areas:

- Biomedical Science
- Health Sciences
- Medicine
- Nursing and Midwifery
- Nutrition and dietetics
- Occupational Therapy
- Paramedicine
- Physiotherapy
- Psychology
- Public Health
- Radiation Sciences
- Radiography and Medical Imaging

### TEACHING AND LEARNING FACILITIES

Our cutting-edge facilities feature the **Biomedical Learning and Teaching building**, a central hub for undergraduate students learning biomedical sciences. This facility seamlessly integrates practical and informal learning spaces, providing a unified location for academic exploration.

Additionally, our Clayton campus is home to Australia's first specialist heart hospital—the **Victorian Heart Hospital**. This ground breaking institution signifies a new era of integrated heart research and clinical excellence in Australia. Under one roof, patients have access to world-leading cardiac care, supported by pioneering research led by Monash University's Victorian Heart Institute.

We utilise a bench-to-bedside model for our students from the first day they step into our classrooms, where students learn from teaching staff who are embedded in clinical and world-leading research.

### INDUSTRY EXPERIENCE

We partner with leading healthcare providers and industry leaders to equip you for a successful career in health.

### SCHOLARS PROGRAM

Our courses in biomedical science, nursing and nutrition science offer a **Scholars Program** for high achievers. The Scholars Program will offer you the opportunity to be mentored by our senior students and leading researchers.



**CLICK HERE**  
FOR FULL DETAILS OF OUR  
UNDERGRADUATE COURSE  
OFFERING

### RANKINGS

Monash Medicine, Nursing and Health Sciences has achieved excellent rankings for many subject areas, with the following falling in the top 50 rankings:

**NO.1** IN AUSTRALIA  
AND  
**NO.5** IN THE WORLD  
FOR NURSING<sup>1</sup>

**RANKED**  
**NO.2** IN AUSTRALIA  
AND  
**NO.24** IN THE WORLD  
FOR PUBLIC HEALTH<sup>1</sup>

**RANKED**  
**NO.24**  
FOR ANATOMY  
AND PHYSIOLOGY<sup>2</sup>

**RANKED**  
**NO.40**  
FOR MEDICINE<sup>2</sup>

**RANKED**  
**NO.2** IN AUSTRALIA  
AND  
**NO.29** IN THE WORLD  
FOR CLINICAL AND HEALTH<sup>3</sup>

<sup>1</sup> Shanghai Academic Ranking of World Universities by Subject, 2024.  
<sup>2</sup> QS World rankings by subject, 2023.  
<sup>3</sup> Times Higher Education World University Rankings by subject, 2024.

### Bachelor of Biomedical Science

COURSE CODE: M2003 CRICOS CODE: 028805K

LOCATION **CLAYTON**  
DURATION **3 YEARS**  
INTAKE **FEBRUARY, JULY**  
FEES<sup>2</sup> **A\$46,900**  
 SCHOLARS PROGRAM<sup>5</sup>

#### DOUBLE DEGREES:

- Commerce
- Engineering (Honours)<sup>6</sup>
- Laws (Honours)
- Science

#### PREREQUISITE SUBJECT LEVELS and assumed knowledge<sup>3</sup>

**PREREQUISITE:** English level 1  
assumed knowledge: Chemistry and Maths level 3 or Physics

#### ENGLISH TEST LEVEL<sup>4</sup>

For further information, refer to pages 38-39.

**LEVEL B** (refer to page 41)

### Bachelor of Health Sciences

COURSE CODE: M2014 CRICOS CODE: 068365J

LOCATION **CAULFIELD**  
DURATION **3 YEARS**  
INTAKE **FEBRUARY, JULY**  
FEES<sup>2</sup> **A\$40,200**

#### DOUBLE DEGREE:

- Arts

#### PREREQUISITE SUBJECT LEVELS and assumed knowledge<sup>3</sup>

**PREREQUISITE:** English level 1  
assumed knowledge: None

#### ENGLISH TEST LEVEL<sup>4</sup>

For further information, refer to pages 38-39.

**LEVEL A** (refer to page 41)

### Bachelor of Medical Science and Doctor of Medicine<sup>1</sup>

COURSE CODE: M6011 CRICOS CODE: 088889D

LOCATION **CLAYTON**  
DURATION **5 YEARS**  
INTAKE **FEBRUARY**  
FEES<sup>2</sup> **A\$92,200**

- ADDITIONAL REQUIREMENTS
- PROFESSIONALLY ACCREDITED

#### PREREQUISITE SUBJECT LEVELS

**PREREQUISITE:** English level 2 and Chemistry

#### ENGLISH TEST LEVEL<sup>4</sup>

For further information, refer to pages 38-39.

**LEVEL C** (refer to page 41)



### Bachelor of Nursing<sup>1</sup>

COURSE CODE: M2006 CRICOS CODE: 075119J

LOCATION **CLAYTON, PENINSULA**  
DURATION **3 YEARS**  
INTAKE **FEBRUARY**  
FEES<sup>2</sup> **A\$41,100**

- SCHOLARS PROGRAM<sup>5</sup>
- ADDITIONAL REQUIREMENTS<sup>7</sup>
- PROFESSIONALLY ACCREDITED

#### PREREQUISITE SUBJECT LEVELS and assumed knowledge<sup>3</sup>

**PREREQUISITE:** English level 1 For further information, refer to pages 38-39.  
assumed knowledge: Maths level 1

#### ENGLISH TEST LEVEL<sup>4</sup>

**LEVEL D** (refer to page 41)

### Bachelor of Nursing and Bachelor of Midwifery (Honours)<sup>1</sup>

COURSE CODE: M3007 CRICOS CODE: 089708F

LOCATION **PENINSULA**  
DURATION **4 YEARS**  
INTAKE **FEBRUARY**  
FEES<sup>2</sup> **A\$41,100**

- ADDITIONAL REQUIREMENTS<sup>7</sup>
- PROFESSIONALLY ACCREDITED

#### PREREQUISITE SUBJECT LEVELS and assumed knowledge<sup>3</sup>

**PREREQUISITE:** English level 1 For further information, refer to pages 38-39.  
assumed knowledge: Maths level 1

#### ENGLISH TEST LEVEL<sup>4</sup>

**LEVEL D** (refer to page 41)

### Bachelor of Nutrition Science

COURSE CODE: M2001 CRICOS CODE: 075117M

LOCATION **CLAYTON**  
DURATION **3 YEARS**  
INTAKE **FEBRUARY**  
FEES<sup>2</sup> **A\$44,300**

- PROFESSIONALLY ACCREDITED
- SCHOLARS PROGRAM<sup>5</sup>

#### PREREQUISITE SUBJECT LEVELS and assumed knowledge<sup>3</sup>

**PREREQUISITE:** English level 1 For further information, refer to pages 38-39.

#### ENGLISH TEST LEVEL<sup>4</sup>

**LEVEL B** (refer to page 41)

### Bachelor of Occupational Therapy (Honours)<sup>1</sup>

COURSE CODE: M3001 CRICOS CODE: 082509C

LOCATION **PENINSULA**  
DURATION **4 YEARS**  
INTAKE **FEBRUARY**  
FEES<sup>2</sup> **A\$49,700**

- PROFESSIONALLY ACCREDITED
- ADDITIONAL REQUIREMENTS

#### PREREQUISITE SUBJECT LEVELS and assumed knowledge<sup>3</sup>

**PREREQUISITE:** English level 1 For further information, refer to pages 38-39.  
assumed knowledge: None

#### ENGLISH TEST LEVEL<sup>4</sup>

**LEVEL B** (refer to page 41)

### Bachelor of Paramedicine<sup>1</sup>

COURSE CODE: M2011 CRICOS CODE: 094996F

LOCATION **PENINSULA**  
DURATION **3 YEARS**  
INTAKE **FEBRUARY**  
FEES<sup>2</sup> **A\$40,200**

- PROFESSIONALLY ACCREDITED
- ADDITIONAL REQUIREMENTS

#### PREREQUISITE SUBJECT LEVELS and assumed knowledge<sup>3</sup>

**PREREQUISITE:** English level 1 For further information, refer to pages 38-39.  
assumed knowledge: None

#### ENGLISH TEST LEVEL<sup>4</sup>

**LEVEL B** (refer to page 41)

### Bachelor of Physiotherapy (Honours)<sup>1</sup>

COURSE CODE: M3002 CRICOS CODE: 064804A

LOCATION **PENINSULA**  
DURATION **4 YEARS**  
INTAKE **FEBRUARY**  
FEES<sup>2</sup> **A\$57,200**

- PROFESSIONALLY ACCREDITED
- ADDITIONAL REQUIREMENTS

#### PREREQUISITE SUBJECT LEVELS and assumed knowledge<sup>3</sup>

**PREREQUISITE:** English level 2 For further information, refer to pages 38-39.  
assumed knowledge: Two of Chemistry, Biology, Maths level 3 or Physics.

#### ENGLISH TEST LEVEL<sup>4</sup>

**LEVEL C** (refer to page 41)

### Bachelor of Psychology

COURSE CODE: M2018 CRICOS CODE: 108900M

LOCATION **CLAYTON**  
DURATION **3 YEARS**  
INTAKE **FEBRUARY**  
FEES<sup>2</sup> **A\$44,200**

- PROFESSIONALLY ACCREDITED

#### PREREQUISITE SUBJECT LEVELS and assumed knowledge<sup>3</sup>

**PREREQUISITE:** English level 1 For further information, refer to pages 38-39.  
assumed knowledge: None

#### ENGLISH TEST LEVEL<sup>4</sup>

**LEVEL A** (refer to page 41)

### Bachelor of Public Health

COURSE CODE: M2012 CRICOS CODE: 094997E

LOCATION **CAULFIELD**  
DURATION **3 YEARS**  
INTAKE **FEBRUARY**  
FEES<sup>2</sup> **A\$40,200**

#### PREREQUISITE SUBJECT LEVELS and assumed knowledge<sup>3</sup>

**PREREQUISITE:** English level 1 For further information, refer to pages 38-39.  
assumed knowledge: None

#### ENGLISH TEST LEVEL<sup>4</sup>

**LEVEL A** (refer to page 41)

### Bachelor of Radiation Sciences

COURSE CODE: M2017 CRICOS CODE: 0100635

LOCATION **CLAYTON**  
DURATION **3 YEARS**  
INTAKE **FEBRUARY**  
FEES<sup>2</sup> **A\$41,100**

#### PREREQUISITE SUBJECT LEVELS and assumed knowledge<sup>3</sup>

**PREREQUISITE:** English level 1 For further information, refer to pages 38-39.  
assumed knowledge: Maths level 3

#### ENGLISH TEST LEVEL<sup>4</sup>

**LEVEL B** (refer to page 41)

### Bachelor of Radiography and Medical Imaging (Honours)<sup>1</sup>

COURSE CODE: M3006 CRICOS CODE: 080032G

LOCATION **CLAYTON**  
DURATION **4 YEARS**  
INTAKE **FEBRUARY**  
FEES<sup>2</sup> **A\$54,300**

- PROFESSIONALLY ACCREDITED
- ADDITIONAL REQUIREMENTS

#### PREREQUISITE SUBJECT LEVELS and assumed knowledge<sup>3</sup>

**PREREQUISITE:** English level 2 For further information, refer to pages 38-39.  
assumed knowledge: Maths level 3 and Biology or Physics

#### ENGLISH TEST LEVEL<sup>4</sup>

**LEVEL C** (refer to page 41)

COUNTRY/ REGION	INTERNATIONAL QUALIFICATION	ENTRY SCORE														
		BIO MEDICAL SCIENCE	HEALTH SCIENCES	MEDICAL SCIENCE AND DOCTOR OF MEDICINE <sup>1</sup>	NURSING <sup>1</sup>		NURSING AND MIDWIFERY (HONOURS) <sup>1</sup>	NUTRITION SCIENCE	OCCUPATIONAL THERAPY (HONOURS) <sup>1</sup>	PARAMEDICINE <sup>1</sup>	PHYSIOTHERAPY (HONOURS) <sup>1</sup>	PSYCHOLOGY	PUBLIC HEALTH	RADIATION SCIENCES	RADIOGRAPHY AND MEDICAL IMAGING (HONOURS) <sup>1</sup>	
					CLAYTON	PENINSULA										
Australia	2025 ATAR for international students	90	70	97.5	75	72.50	85	75	82.5	72.5	92.5	85	72.5	80	92.5	
	UNSW Foundation Studies	8.5	6.5	9.5	7	6.75	8	7	7.75	6.75	8.75	8	6.75	7.5	8.75	
	Melbourne University, Trinity College Foundation Studies	86%	67%	95%	72%	70%	81%	72%	79%	70%	88%	81%	70%	77%	88%	
	<b>Monash College</b>															
Australia	Monash University Foundation Year (commencing MJFY in 2025)	83.50%	67.50%	90%	72.50%	67.50%	77.50%	67.50%	82.50%	77.50%	90%	76.25%	71%	72.50%	90%	
	Monash College Diploma Part 2	NA	NA	NA	NA	NA	NA	NA	NA	NA	NA	NA	NA	NA	NA	
Britain – global	GCE A Levels	12	7	15	8	7.5	10	8	9.5	7.5	13	10	7.5	9	13	
Canada	Ontario Secondary School Diploma – Grade 12	87.90%	75.40%	92.50%	78.50%	77%	84.80%	78.50%	83.20%	77%	89.40%	84.80%	77%	81.60%	89.40%	
China	Gaokao	80%	65%	NA	65%	65%	70%	65%	70%	65%	80%	70%	65%	65%	80%	
Global	International Baccalaureate (IB) Diploma Programme	33	25	39	26	25	30	26	29	25	35	30	25	28	35	
Hong Kong	Hong Kong Diploma of Secondary Education	21	16	25	17	16	19	17	18	16	22	19	16	18	22	
India	All India Senior School Certificate	83%	66%	90%	70%	67.50%	80%	70%	78.50%	67.50%	83.50%	80%	67.50%	75%	83.50%	
	Indian School Certificate Examination	77%	60%	85%	65%	62.50%	75%	65%	72.50%	62.50%	78.50%	75%	62.50%	70%	78.50%	
Indonesia	SMA3 – 10-point scale (6 pass)	8.8	7.2	9.5	7.5	7.4	8.1	7.5	8	7.4	8.9	8.1	7.4	7.9	8.9	
Malaysia	STPM	9.7	7.3	11	7.9	7.6	9.1	7.9	8.8	7.6	10	9.1	7.6	8.5	10	
	UEC	2.6	6	1	5	5.5	3.4	5	3.8	5.5	2.2	3.4	5.5	4.2	2.2	
Republic of Korea	College Scholastic Ability Test	350	300	380	310	305	340	310	330	305	360	340	305	320	360	
	High School Diploma	86%	67%	95%	72%	70%	81%	72%	79%	70%	88%	81%	70%	77%	88%	
USA – global	Advanced Placement	8	6	10	6	6	7	6	7	6	8	7	6	7	8	
	SAT (Total score out of 1600)	1290	1120	1420	1160	1140	1240	1160	1220	1140	1320	1240	1140	1190	1320	
Vietnam	High School Diploma	8.56	8	9	8.14	8.07	8.42	8.14	8.35	8.07	8.63	8.42	8.07	8.28	8.63	

1 There are limited places available in this course. The entry score is only indicative.

2 2024 quoted fees, in Australian dollars and are subject to change. Fees are per 48 credit points – a standard full-time course load for a year.

3 If you have completed an Australian Year 12 or IB Diploma Programme you must satisfy the maths and/or science prerequisite level requirements specified on page 39. If you have completed another international senior secondary qualification with maths and/or science, see page 39 for full details regarding assumed knowledge.

4 This is only applicable if you have not satisfied the English requirement; you're required to complete a Monash-approved English test such as IELTS (Academic), Internet Based TOEFL or Pearson Test of English (Academic). Other English tests may also be accepted and are assessed when you apply to Monash.

5 High achieving students may qualify for the Scholars program where higher entry requirements apply, see our website for more details.

6 Only available with select Engineering specialisations.

7 Other rules apply to comply with the Australian Health Practitioner Regulation Agency registration standards and English language requirements. Further information is available at [monash.edu/study](http://monash.edu/study)

For full course details visit our website, [monash.edu/study](http://monash.edu/study)



# PHARMACY AND PHARMACEUTICAL SCIENCES

RANKED **NO.2**  
IN THE WORLD<sup>1</sup>

Our pharmacy degree will prepare you to be a medicines expert and work on the frontline of modern patient care. Our pharmaceutical science programs provide expertise in the drug discovery pipeline, preparing you for a career in drug discovery, development and allied industries.

Study as part of a close-knit community at our specialist campus located in Australia's premier health and biomedical precinct in Parkville.

## INDUSTRY EXPERIENCE

Pharmacy students undertake industry placements from early in their course, and those studying the Bachelor of Pharmacy (Honours)/Master of Pharmacy complete a paid internship during their final year.

Pharmaceutical science students have the opportunity to undertake a research or industry placement, or a Monash Flagship Rich Experience.

## SCHOLARS PROGRAM

We offer a Scholars Program for high achievers. This provides exclusive learning opportunities, such as seminars and an invitation to an annual Dean's event. When you successfully complete your degree, your award will reflect your Scholars Program<sup>2</sup>.

 **CLICK HERE FOR FULL DETAILS OF OUR UNDERGRADUATE COURSE OFFERING**

## PHARMACY COURSE HIGHLIGHTS

- International Pharmacy graduates almost universally get jobs straight out of university, with 97% in full-time employment shortly after graduating<sup>3</sup>.
- We were the first university in Australia to introduce a double bachelor and master degree where the fifth year incorporates a 48-week paid internship.
- International students can choose to exit the program after four years with the Bachelor of Pharmacy (Honours) and return home to complete their registration requirements, or they can stay with us and complete their master's while earning a salary as an intern.

## PHARMACEUTICAL SCIENCE HIGHLIGHTS

- Pharmaceutical Science equips you with the skills to research and develop new medicines, preparing you for careers in the global pharmaceutical sector. Further, the skills you'll learn will enable you to work in a wide range of chemistry-related industries, including skincare, coatings, agriculture and food science.
- Our courses provide extensive lab time and expert training on industry-standard instrumentation.
- Victoria is a global hub for biomedical research, medical technology and pharmaceutical manufacturing. With companies such as CSL, Pfizer, Novartis, Merck, Bristol Myers Squibb and GSK located in Victoria, there's strong demand for pharmaceutical science graduates.

## Bachelor of Pharmaceutical Science

COURSE CODE: P2001 CRICOS CODE: 058486E

LOCATION **PARKVILLE**  
DURATION **3 YEARS**  
INTAKE **FEBRUARY**  
FEES<sup>4</sup> **A\$49,600**

INDUSTRY EXPERIENCE

**DOUBLE DEGREE:**

- Engineering (Honours)<sup>7</sup>

**PREREQUISITE SUBJECT LEVELS and assumed knowledge<sup>5</sup>**

**PREREQUISITE:** English level 1  
**assumed knowledge:** Maths level 3 and Chemistry

For further information, refer to pages 38-39.

**ENGLISH TEST LEVEL<sup>6</sup>**  
**LEVEL A** (refer to page 41)

## Bachelor of Pharmaceutical Science Advanced (Honours)

COURSE CODE: P3002 CRICOS CODE: 077237J

LOCATION **PARKVILLE**  
DURATION **4 YEARS**  
INTAKE **FEBRUARY**  
FEES<sup>4</sup> **A\$49,600**

- INDUSTRY EXPERIENCE
- SCHOLARS PROGRAM<sup>2</sup>

**PREREQUISITE SUBJECT LEVELS and assumed knowledge<sup>5</sup>**

**PREREQUISITE:** English level 1  
**assumed knowledge:** Maths level 3 and Chemistry

For further information, refer to pages 38-39.

**ENGLISH TEST LEVEL<sup>6</sup>**  
**LEVEL A** (refer to page 41)

## Bachelor of Pharmacy (Honours)

COURSE CODE: P3001 CRICOS CODE: 082370F

LOCATION **PARKVILLE**  
DURATION **4 YEARS**  
INTAKE **FEBRUARY**  
FEES<sup>4</sup> **A\$52,500**

- INDUSTRY EXPERIENCE

**PREREQUISITE SUBJECT LEVELS and assumed knowledge<sup>5</sup>**

**PREREQUISITE:** English level 1  
**assumed knowledge:** Maths level 3 and Chemistry

For further information, refer to pages 38-39.

**ENGLISH TEST LEVEL<sup>6</sup>**  
**LEVEL A** (refer to page 41)

## Bachelor of Pharmacy (Honours) and Master of Pharmacy

COURSE CODE: P6001 CRICOS CODE: 089709E

LOCATION **PARKVILLE**  
DURATION **5 YEARS**  
INTAKE **FEBRUARY**  
FEES<sup>4</sup> **A\$52,500**

- SCHOLARS PROGRAM<sup>2</sup>
- INDUSTRY EXPERIENCE

**PREREQUISITE SUBJECT LEVELS and assumed knowledge<sup>5</sup>**

**PREREQUISITE:** English level 1  
**assumed knowledge:** Maths level 3 and Chemistry

For further information, refer to pages 38-39.

**ENGLISH TEST LEVEL<sup>6</sup>**  
**LEVEL A** (refer to page 41)

COUNTRY/REGION	INTERNATIONAL QUALIFICATION	ENTRY SCORE					
		PHARMACEUTICAL SCIENCE	PHARMACEUTICAL SCIENCE ADVANCED (HONOURS)		PHARMACY (HONOURS)	PHARMACY (HONOURS)/ MASTER OF PHARMACY	PHARMACY (HONOURS) (SCHOLARS PROGRAM)/ MASTER OF PHARMACY
			(HONOURS)	SCHOLARS PROGRAM <sup>2</sup>			
Australia	2025 ATAR for international students	82.50	90	97.50	90	97.50	
	UNSW Foundation Studies	7.75	8.5	9.5	8.5	9.5	
	University of Melbourne, Trinity College Foundation Studies	79%	86%	95%	86%	95%	
	<b>Monash College</b>						
	Monash University Foundation Year (commencing MUFY in 2025)	72.50%	75%	85%	75%	85%	
	Monash College Diploma Part 2	NA	NA	NA	NA	NA	
Britain – global	GCE A Levels	9.5	12	15	12	15	
Canada	Ontario Secondary School Diploma – Grade 12	83.20%	87.90%	92.50%	87.90%	92.50%	
China	Gaokao	65%	70%	NA	70%	NA	
Global	International Baccalaureate (IB) Diploma Programme	29	33	39	33	39	
Hong Kong	Hong Kong Diploma of Secondary Education	18	21	25	21	25	
India	All India Senior School Certificate	78.50%	83%	90%	83%	90%	
	Indian School Certificate Examination	72.50%	77%	85%	77%	85%	
Indonesia	SMA3 – 10-point scale (6 pass)	8	8.8	9.5	8.8	9.5	
	STPM	8.8	9.7	11	9.7	11	
Malaysia	UEC	3.8	2.6	1	2.6	1	
	College Scholastic Ability Test	330	350	380	350	380	
Republic of Korea	High School Diploma	79%	86%	95%	86%	95%	
	Advanced Placement	7	8	10	8	10	
USA – global	SAT (Total score out of 1600)	1220	1290	1420	1290	1420	
	High School Diploma	8.35	8.56	9	8.56	9	

1 QS World University Rankings by Subject 2023.

2 High achieving students may qualify for the Scholars program where higher entry requirements apply, see our website for more details.

3 QILT Graduate Outcomes Survey 2022.

4 2024 quoted fees, in Australian dollars and are subject to change. Fees are per 48 credit points – a standard full-time course load for a year.

5 If you have completed an Australian Year 12 or IB Diploma Programme you must satisfy the maths and/or science prerequisite level requirements specified on page 39. If you have completed another international senior secondary qualification with maths and/or science, see page 39 for full details regarding assumed knowledge.

6 This is only applicable if you have not satisfied the English requirement; you're required to complete a Monash-approved English test such as IELTS (Academic), Internet Based TOEFL or Pearson Test of English (Academic). Other English tests may also be accepted and are assessed when you apply to Monash.

7 Only available with the Chemical engineering specialisation.

For full course details visit our website, [monash.edu/study](http://monash.edu/study)



## SCIENCE

Studying science at Monash gives you the opportunity to learn from leading experts who are at the forefront of teaching and research in pure and applied sciences.

You'll develop academically and personally in a dynamic and stimulating environment, with access to brilliant minds, exceptional new facilities and dedicated spaces.

### WHY STUDY SCIENCE AT MONASH?

Monash has one of the most flexible science degrees in Australia, allowing you to tailor programs to your specific interest. You can study subjects across the scientific spectrum and even take units from other areas, such as arts, music and business. Additionally, you could combine your science course with another interest area, perhaps graduating with a double degree with 10 double degree combinations offered (only applicable with the Bachelor of Science).

### INDUSTRY EXPERIENCE

- We provide career coaching and guidance to prepare you for the world after university.
- Build your professional experience with an internship or project. A science industry internship will give you real-world experience and count as credit towards your degree
  - Our 'Career skills for scientists' unit uses work related activities to enhance valuable skills such as commercial awareness, leadership, teamwork and communication.



### FACILITIES

More than \$200 million has been invested in recent years to transform the Clayton-based Science Faculty into one of the leading science precincts in the southern hemisphere.

- Science student learning lounge
- Earth sciences garden
- Jock Marshall reserve
- Green chemical futures building
- Physics and astronomy collaborative learning environment (pace)
- New Horizons research centre
- Maths Learning Centre
- The Hutton-Westfold observatory.

 **CLICK HERE FOR FULL DETAILS OF OUR UNDERGRADUATE COURSE OFFERING**

### Bachelor of Applied Data Science

COURSE CODE: S2010 CRICOS CODE: 099359F

LOCATION **CLAYTON**  
DURATION **3 YEARS**  
INTAKE **FEBRUARY**  
FEES<sup>2</sup> **A\$53,200**

#### PREREQUISITE SUBJECT LEVELS and assumed knowledge<sup>3</sup>

**PREREQUISITE:** English level 1  
**assumed knowledge:** Maths level 3

For further information, refer to pages 38-39.

**ENGLISH TEST LEVEL<sup>4</sup>**  
**LEVEL A** (refer to page 41)

### Bachelor of Applied Data Science Advanced (Honours)

COURSE CODE: S3003 CRICOS CODE: 099360B

LOCATION **CLAYTON**  
DURATION **4 YEARS**  
INTAKE **FEBRUARY**  
FEES<sup>2</sup> **A\$53,200**

#### PREREQUISITE SUBJECT LEVELS and assumed knowledge<sup>3</sup>

**PREREQUISITE:** English level 1  
**assumed knowledge:** Maths level 3

For further information, refer to pages 38-39.

**ENGLISH TEST LEVEL<sup>4</sup>**  
**LEVEL A** (refer to page 41)

### Bachelor of Science Advanced – Global Challenges (Honours)<sup>1</sup>

COURSE CODE: S3001 CRICOS CODE: 083682D

LOCATION **CLAYTON**  
DURATION **4 YEARS**  
INTAKE **FEBRUARY**  
FEES<sup>2</sup> **A\$55,500**

#### PREREQUISITE SUBJECT LEVELS and assumed knowledge<sup>3</sup>

**PREREQUISITE:** English level 2  
**assumed knowledge:** One of Biology, Chemistry, Environmental Science, Geography, Physics, Psychology or Maths level 3.

For further information, refer to pages 38-39.

**ENGLISH TEST LEVEL<sup>4</sup>**  
**LEVEL C** (refer to page 41)

**ADDITIONAL REQUIREMENTS**

### Bachelor of Science Advanced – Research (Honours)

COURSE CODE: S3002 CRICOS CODE: 083681E

LOCATION **CLAYTON**  
DURATION **4 YEARS**  
INTAKE **FEBRUARY, JULY**  
FEES<sup>2</sup> **A\$51,500**

#### PREREQUISITE SUBJECT LEVELS and assumed knowledge<sup>3</sup>

**PREREQUISITE:** English level 2  
**assumed knowledge:** Maths level 3 and two of Biology, Chemistry, Environmental Science, Geography, Physics or Psychology

For further information, refer to pages 38-39.

**ENGLISH TEST LEVEL<sup>4</sup>**  
**LEVEL C** (refer to page 41)

### Bachelor of Science

COURSE CODE: S2000 CRICOS CODE: 017092G

LOCATION **CLAYTON**  
DURATION **3 YEARS**  
INTAKE **FEBRUARY, JULY**  
FEES<sup>2</sup> **A\$50,400**

#### PREREQUISITE SUBJECT LEVELS and assumed knowledge<sup>3</sup>

**PREREQUISITE:** English Level 1  
**assumed knowledge:** One of Biology, Chemistry, Environmental Science, Geography, Physics, Psychology or Maths level 3.

For further information, refer to pages 38-39.

**ENGLISH TEST LEVEL<sup>4</sup>**  
**LEVEL A** (refer to page 41)

#### DOUBLE DEGREES:

- Arts
- Biomedical Science
- Commerce
- Computer Science
- Education (Honours)<sup>5</sup>
- Engineering (Honours)<sup>5</sup>
- Global studies
- Information Technology
- Laws (Honours)
- Music

Below lists our majors and minors, and applies to the Bachelor of Science, Bachelor of Science Advanced – Global Challenges, and Bachelor of Science Advanced – Research (Honours)

■ MAJOR ● EXTENDED MAJOR ▲ MINOR

#### BIOLOGICAL AND LIFE SCIENCES

Ecology and conservation biology ■ ● ▲ Genetic and genomics ■ ● ▲ Zoology ■ ▲  
Environmental Science ● Plant sciences ■ ▲

#### EARTH AND ENVIRONMENTAL SCIENCE

Climate and atmospheric science ■ ● ▲ Earth science ■ ● ▲  
Environmental Science ● Geographical science ■ ● ▲

#### BIOMEDICAL AND BEHAVIOURAL SCIENCE

Anatomy and developmental biology ■ ▲ Immunology ■ ● ▲ Pharmacology ■ ▲  
Biochemistry ■ ● ▲ Microbiology ■ ● ▲ Physiology ■ ▲  
Human pathology ■ Molecular biology ▲ Psychology ■ ● ▲

#### MATHEMATICAL AND COMPUTATION SCIENCES

Applied mathematics ■ ● Financial and insurance mathematics ● Mathematics ■ ● ▲  
Computational science ■ ● ▲ Mathematical statistics ▲ Pure mathematics ■ ●

#### PHYSICS AND CHEMICAL SCIENCES

Astrophysics ■ ● ▲ Chemistry ■ ● ▲ Physics ■ ● ▲

COUNTRY/REGION	INTERNATIONAL QUALIFICATION	ENTRY SCORE				
		APPLIED DATA SCIENCE	APPLIED DATA SCIENCE ADVANCED (HONOURS)	SCIENCE	SCIENCE ADVANCED – GLOBAL CHALLENGES (HONOURS) <sup>1</sup>	SCIENCE ADVANCED – RESEARCH (HONOURS)
Australia	2025 ATAR for international students	80	90	80	90	95
	UNSW Foundation Studies	7.5	8.5	7.5	8.5	9
	University of Melbourne, Trinity College Foundation Studies	77%	86%	77%	86%	90%
	<b>Monash College</b>					
	Monash University Foundation Year (commencing MUFY in 2025)	72.50%	80%	72.50%	80%	85%
	Monash College Diploma Part 2 <sup>6</sup>	60%	75%	55%	NA	NA
Britain – global	GCE A Levels	9	12	9	12	14
Canada	Ontario Secondary School Diploma – Grade 12	81.60%	87.90%	81.60%	87.90%	91%
China	Gaokao	65%	70%	65%	70%	70%
Global	International Baccalaureate (IB) Diploma Programme	28	33	28	33	36
Hong Kong	Hong Kong Diploma of Secondary Education	18	21	18	21	23
India	All India Senior School Certificate	75%	83%	75%	83%	85%
	Indian School Certificate Examination	70%	77%	70%	77%	80%
Indonesia	SMA3 – 10-point scale (6 pass)	7.9	8.8	7.9	8.8	9
Malaysia	STPM	8.5	9.7	8.5	9.7	10.3
	UEC	4.2	2.6	4.2	2.6	1.8
Republic of Korea	College Scholastic Ability Test	320	350	320	350	365
	High School Diploma	77%	86%	77%	86%	90%
USA – global	Advanced Placement	7	8	7	8	9
	SAT (Total score out of 1600)	1190	1290	1190	1290	1360
Vietnam	High School Diploma	8.28	8.56	8.28	8.56	8.7

<sup>1</sup> There are limited places available in this course. The entry score is only indicative.

<sup>2</sup> 2024 quoted fees, in Australian dollars and are subject to change. Fees are per 48 credit points – a standard full-time course load for a year.

<sup>3</sup> If you have completed an Australian Year 12 or IB Diploma Programme you must satisfy the maths and/or science prerequisite level requirements specified on page 39. If you have completed another international senior secondary qualification with maths and/or science, see page 39 for full details regarding assumed knowledge.

<sup>4</sup> This is only applicable if you have not satisfied the English requirement; you're required to complete a Monash-approved English test such as IELTS (Academic), Internet Based TOEFL or Pearson Test of English (Academic). Other English tests may also be accepted and are assessed when you apply to Monash.

<sup>5</sup> Only available with select specialisations.

<sup>6</sup> The Monash College Diploma Part 1 and 2 entry requirements published in this guide are for students commencing their undergraduate destination degree in 2026 and are applicable to specific Diploma programs only, [monashcollege.edu.au/courses/diplomas](https://monashcollege.edu.au/courses/diplomas)

For full course details visit our website, [monash.edu/study](https://monash.edu/study)



# PREREQUISITE SUBJECT LEVELS

All undergraduate courses require you to have previously studied and achieved required Australian level standards in specific subjects known as prerequisite subjects. Different prerequisite subject levels apply to each undergraduate course, and can be located on the course-specific pages (12-37) of this guide.

For any English prerequisite, you can meet this requirement by completing an approved English subject. The table below outlines approved English subjects for common global qualifications. Other ways to meet English requirements are detailed on page 38 in this guide.

ENGLISH			
■ Level 1 – English (Australian Year 12 equivalent)		■ Level 2 – Higher score in English (Australian Year 12 equivalent)	
<b>VCE</b>			
Units 3 and 4: a study score of at least 27 <sup>1</sup> in English (EAL) or 25 in English other than EAL		Units 3 and 4: a study score of at least 35 in English (EAL) or 30 in English other than EAL	
<b>IB</b>			
At least 4 in one of the following SL subjects: <ul style="list-style-type: none"> <li>English A: Literature</li> <li>English A: Language and Literature</li> <li>Literature and Performance, <i>OR</i></li> </ul> At least 3 in one of the following HL subjects: <ul style="list-style-type: none"> <li>English A: Literature</li> <li>English A: Language and Literature, <i>OR</i></li> </ul>	At least 5 in one of the following SL subjects: <ul style="list-style-type: none"> <li>English AB</li> <li>English B, <i>OR</i></li> </ul> At least 4 in the following HL subject: <ul style="list-style-type: none"> <li>English B</li> </ul>	At least 5 in one of the following SL subjects: <ul style="list-style-type: none"> <li>English A: Literature, or</li> <li>English A: Language and Literature</li> <li>Literature and Performance, <i>OR</i></li> </ul> At least 4 in one of the following HL subjects: <ul style="list-style-type: none"> <li>English A: Literature</li> <li>English A: Language and Literature, <i>OR</i></li> </ul>	At least 6 in one of the following SL subjects: <ul style="list-style-type: none"> <li>English AB</li> <li>English B, <i>OR</i></li> </ul> At least 5 in the following HL subject: <ul style="list-style-type: none"> <li>English B</li> </ul>
<b>GCE A Levels</b>			
C grade or score of 4 in one of the following IGCSE subjects: <ul style="list-style-type: none"> <li>Literature in English</li> <li>Literature (English)</li> <li>English Literature</li> <li>Cambridge First Language English 0522/0627/0990</li> <li>World Literature</li> <li>English Language</li> <li>English Language A</li> <li>English Language B, <i>OR</i></li> </ul> B grade or score of 5 in IGCSE English as a Second Language, <i>OR</i> C grade in Cambridge IGCSE First Language English 0500 with a grade 3 or lower in Speaking and Listening, <i>OR</i> C grade or score of 4 in one of the following GCSE/GCE O Level subjects: <ul style="list-style-type: none"> <li>English Language</li> <li>Literature in English</li> <li>English Literature</li> <li>English</li> <li>English Language (Syllabus B)</li> </ul>	C grade in one of the following GCE AS Level subjects: <ul style="list-style-type: none"> <li>General Paper</li> <li>General Studies</li> <li>English General Paper</li> <li>English language</li> <li>Language and Literature in English (previously known as Language and Literature)</li> <li>Literature in English</li> <li>English Literature</li> <li>English Language and Literature, <i>OR</i></li> </ul> E grade in one of the following GCE A Level subjects: <ul style="list-style-type: none"> <li>General Studies</li> <li>English General Paper</li> <li>English language</li> <li>Literature in English</li> <li>English Language and Literature</li> <li>English Literature, <i>OR</i></li> <li>GCE A Level English Rich subject<sup>2</sup></li> </ul>	B grade or score of 5 in one of the following IGCSE subjects: <ul style="list-style-type: none"> <li>Literature in English</li> <li>Literature (English)</li> <li>English Literature</li> <li>Cambridge First Language English 0522/0627/0990</li> <li>World Literature</li> <li>English Language</li> <li>English Language A</li> <li>English Language B, <i>OR</i></li> </ul> A grade or score of 7 in IGCSE English as a Second Language, <i>OR</i> B grade in Cambridge IGCSE First Language English 0500 with a grade 2 or lower in Speaking and Listening, <i>OR</i> B grade or score of 5 in one of the following GCSE/GCE O Level subjects: <ul style="list-style-type: none"> <li>English Language</li> <li>Literature in English</li> <li>English Literature</li> <li>English</li> <li>English Language (Syllabus B)</li> </ul>	B grade in one of the following GCE AS Level subjects: <ul style="list-style-type: none"> <li>General Paper</li> <li>General Studies</li> <li>English General Paper</li> <li>English language</li> <li>Language and Literature in English (previously known as Language and Literature)</li> <li>Literature in English</li> <li>English Literature</li> <li>English Language and Literature, <i>OR</i></li> </ul> D grade in one of the following GCE A Level subjects: <ul style="list-style-type: none"> <li>General Studies</li> <li>English General Paper</li> <li>English language</li> <li>Literature in English</li> <li>English Language and Literature</li> <li>English Literature, <i>OR</i></li> <li>GCE A Level English Rich subject<sup>2</sup></li> </ul>
<b>Advanced Placement</b>			
AP examination score of 3 in one of the following: <ul style="list-style-type: none"> <li>AP English Language and Composition, and</li> <li>AP English Literature and Composition</li> </ul>		AP examination score of 4 in one of the following: <ul style="list-style-type: none"> <li>AP English Language and Composition, and</li> <li>AP English Literature and Composition</li> </ul>	
<b>Scholastic Aptitude Test</b>			
Refer to Advanced Placement and American High School Diploma to locate other ways on how to satisfy English prerequisite requirements <sup>3</sup>			
<b>Scholastic Aptitude Test Subject Tests</b>			
Refer to Advanced Placement and American High School Diploma to locate other ways on how to satisfy English prerequisite requirements <sup>3</sup>			
<b>American High School Diploma (must be regionally accredited)</b>			
Pass average in Grade 12 English or Grade 12 English Rich subject <sup>2</sup>		<b>100% scale (60% pass):</b> 70% average in Grade 12 English or Grade 12 English Rich subject <sup>2</sup> <b>100% scale (65% pass):</b> 75% average in Grade 12 English or Grade 12 English Rich subject <sup>2</sup> <b>100% scale (70% pass):</b> 80% average in Grade 12 English or Grade 12 English Rich subject <sup>2</sup>	

<sup>1</sup> This applies to all courses except the Bachelor of Education (Honours), the Bachelor of Occupational Therapy (Honours) and the Bachelor of Paramedicine, where a study score of at least 30 in English (EAL) or 25 in English other than EAL is required.

<sup>2</sup> The acceptance of English Rich subjects is subject to faculty approval (other guidelines also apply).

<sup>3</sup> Monash University does not accept SAT Subject Test in Literature as meeting English prerequisite requirements.

# ASSUMED KNOWLEDGE

Some undergraduate courses require you to have prior knowledge in maths and/or science to prepare you to succeed in your studies at Monash University. If you have completed an:

- **Australian Year 12 or International Baccalaureate Diploma Programme**

You'll be required to meet the maths and/or science prerequisite level requirements for your preferred course as specified in the table below. The maths and/or science levels for each course can be located on the course specific pages (12-37) of this guide under 'assumed knowledge'.

- **Monash-approved international senior secondary qualification (or higher qualification) with maths and/or science at the required level**

It will be assumed that you have reached the level of knowledge equivalent to the VCE prerequisite required for your preferred course. To support your preparation for your studies, we strongly recommend that you strengthen your knowledge in the relevant areas by completing specific online maths and/or science modules once they are available at the end of 2024 at [monash.edu/study/courses/prerequisite-subjects-and-assumed-knowledge](https://monash.edu/study/courses/prerequisite-subjects-and-assumed-knowledge) and before you commence your studies at Monash University. These guidelines do not apply to Bachelor of Medical Science and Doctor of Medicine.

MATHS			Science
■ Level 1 <sup>1,2</sup> Mathematics (Australian Year 11 equivalent)	■ Level 2 <sup>2</sup> Mathematics (Australian Year 12 equivalent)	■ Level 3 Higher level mathematics (Australian Year 12 equivalent)	■ Science (Australian Year 12 equivalent)
AUSTRALIAN YEAR 12			
VCE: Units 1 AND 2: Satisfactory completion in 2 units (any study combination) of General Mathematics or, Mathematical Methods or Specialist Mathematics, or Australian interstate equivalent.	VCE Units 3 AND 4: a study score of at least 22 in Mathematical Methods (any) or Specialist Mathematics, or a score of at least 25 in General Mathematics (previously known as Further Mathematics), or Australian interstate equivalent.	VCE: Units 3 and 4: a study score of at least 25 in one of Mathematical Methods (any) or Specialist Mathematics, or Australian interstate equivalent.	VCE: Units 3 and 4: a study score of at least 25 in one of Biology, Chemistry, Environmental Science, Geography, Mathematical Methods (any), Specialist Mathematics, Physics or Psychology, or Australian interstate equivalent, unless otherwise stated.
INTERNATIONAL BACCALAUREATE (IB) DIPLOMA PROGRAMME			
At least 3 in any mathematics subject at SL or HL level.	At least of 4 in the following SL subject: Mathematics: Application and Interpretations	At least 4 in the following SL subject: <ul style="list-style-type: none"> <li>Mathematics: Analysis and Approaches, <i>OR</i></li> </ul> At least 3 in the following HL subjects: <ul style="list-style-type: none"> <li>Mathematics: Applications and Interpretations, or</li> <li>Mathematics: Analysis and Approaches.</li> </ul>	At least 4 at SL or 3 at HL in Biology, Chemistry, Environmental Systems and Societies (SL only), Geography, Mathematics: Analysis and Approaches, Mathematics: Applications and Interpretations (HL only), Physics or Psychology, unless otherwise stated.

<sup>1</sup> Maths subjects listed in the Level 2 and Level 3 columns can also be used to satisfy Level 1 maths prerequisite requirements.

<sup>2</sup> Maths subjects listed in the Level 3 column can also be used to satisfy Level 1 and Level 2 maths prerequisite requirements.



# ENTRY REQUIREMENTS

When you apply to Monash University for an undergraduate degree by coursework, you must satisfy all of the following requirements:

**1 MINIMUM AGE REQUIREMENTS:** You must be at least 17 years of age to enrol in an undergraduate course. Some exemptions may apply. Visit [monash.edu/admissions/age-requirements](http://monash.edu/admissions/age-requirements).

**2 ACADEMIC ENTRY REQUIREMENTS:** All undergraduate courses require you to have successfully completed a minimum of an Australian Year 12 qualification (or equivalent) and achieve the required academic entry score. Pages 12-37 of this guide outline the academic entry scores for the listed qualifications that apply to each undergraduate course that applies to international students only. Full details on 'how to calculate your entry score' for each qualification can be located on our website. If your qualification is not listed in this guide refer to [monash.edu/study/courses/find-a-course](http://monash.edu/study/courses/find-a-course).

**3 ENGLISH ENTRY REQUIREMENTS:** All undergraduate courses require you to satisfy English entry requirements where different entry levels apply. The measure of English must be completed within three years prior to the Monash course commencement date (other guidelines may apply).

English entry requirements can be met in one of the following ways:

**English subject (Australian Year 12 equivalent):** You can meet English entry requirements if you've completed an English subject that is equivalent to an Australian Year 12 level, and meet the required score. Approved English subjects for common qualifications are outlined in the prerequisite table on pages 38-39.

**Language of instruction:** You can meet English entry requirements if you've completed studies at an institution where English is the language of instruction, communication and assessment for all aspects of study for the whole of the educational institution, by satisfactorily completing half a year of full-time study (equivalent to 24 Monash-credit points) at Australian VET Diploma (AQF level 5) or higher (or equivalent).

#### English tests

Monash accepts the following English tests as satisfying English entry requirements:

- IELTS (Academic): [www.ielts.org](http://www.ielts.org)
- TOEFL (internet based): [www.ets.org](http://www.ets.org)
- Pearson Test of English (Academic): [www.pearsonpte.com](http://www.pearsonpte.com)
- C1 Advanced and C2 Proficiency: [www.cambridgeenglish.org](http://www.cambridgeenglish.org)

Other English tests may also be accepted and are assessed when you apply to Monash. If you have completed several measures of English proficiency over a period of time, the highest valid measure will be accepted. Monash reserves the right to ask students to undertake a Monash-approved English test to meet English entry requirements. For more information refer to [monash.edu/study/admission-procedure](http://monash.edu/study/admission-procedure).

#### 4 Prerequisite subjects and additional requirements

In addition to meeting English entry requirements, some undergraduate courses may require you to satisfy other prerequisite subjects and additional selection and/or special requirements. Full details for these can be found on our website.

**Please note that all entry requirements for Monash University are subject to change.**

# MONASH UNIVERSITY ENGLISH TEST LEVELS

Each Monash course has an assigned English test level that applies to Monash-approved English tests where the entry scores for each level are specified below.

## Monash University English test levels

Level	IELTS (Academic)					Internet Based TOEFL					Pearson Test of English (Academic)				
	Overall band score	Listening	Reading	Speaking	Writing	Total score	Listening	Reading	Speaking	Writing	Overall score	Listening	Reading	Speaking	Writing
A	6.5	6.0	6.0	6.0	6.0	79	12	13	18	21	58	50	50	50	50
B	6.5	6.5	6.5	6.0	6.0	79	20	19	18	21	58	58	58	50	50
C	7.0	6.5	6.5	6.5	6.5	94	20	19	20	24	65	58	58	58	58
D	7.0	7.0	7.0	7.0	7.0	98	24	24	23	27	65	65	65	65	65

## Monash College English test levels

Monash College Level	Monash English (ME)	IELTS (Academic)					TOEFL iBT Paper Edition <sup>1</sup>					Pearson Test of English (Academic) <sup>1</sup>				
MC – A Monash University Foundation Year (Extended)	ME Module 1	5.0	4.5	4.5	4.5	4.5	32	W12	R3	L3	S12	36	36	36	36	36
MC – B Monash University Foundation Year (Standard)	ME Module 2	5.5	5.0	5.0	5.0	5.0	46	W14	R4	L4	S14	42	36	36	36	36
MC – C Monash University Foundation Year (Intensive)	ME Module 3	6.0	5.5	5.5	5.5	5.5	60	W18	R8	L7	S16	50	42	42	42	42
MC – B Diploma Part 1	ME Module 2	5.5	5.0	5.0	5.0	5.0	46	W14	R4	L4	S14	42	36	36	36	36
MC – C Diploma Part 2	ME Module 3	6.0	5.5	5.5	5.5	6.0	60	W18	R8	L7	S16	50	42	42	42	50

W – Writing R – Reading L – Listening S – Speaking

<sup>1</sup> Test score equivalencies may change. For current requirements, please refer to: [monashcollege.edu.au/courses/english](http://monashcollege.edu.au/courses/english)

### MONASH UNIVERSITY ENGLISH LANGUAGE CENTRE

If your English test does not meet the English requirements for direct entry to Monash University courses, you may want to consider completing an English program offered at the Monash University English Language Centre. For more information visit [monashcollege.edu.au/courses/english](http://monashcollege.edu.au/courses/english)







# APPLICATION PROCESS FOR INTERNATIONAL STUDENTS

## BEFORE YOU APPLY

Use [monash.edu/study](https://monash.edu/study) to check:

- minimum age requirements
- academic entry requirements that apply to international students
- English entry requirements
- prerequisite subject requirements
- assumed knowledge and complete online modules to strengthen knowledge (if applicable)
- additional requirements (if applicable)
- special requirements (see course handbook) [handbook.monash.edu](https://handbook.monash.edu)
- application deadlines
- start dates
- fees.

### WHEN SHOULD YOU APPLY?

Apply online as early as possible as some courses may close a few months or a year before the course start date. This allows time for your application to be processed and can help to secure a place if your preferred course has limited places. Applying early also gives you time to get your student visa, which can take up to six months for some nationalities and countries.

### WHEN TO APPLY THROUGH VTAC

International students who are undertaking an Australian Year 12 qualification in Australia or overseas, IB Diploma Programme in Australia or New Zealand, or National Certificate of Educational Achievement (NCEA) Level 3 in New Zealand, must apply through the Victorian Tertiary Admissions Centre (VTAC), visit [www.vtac.edu.au](https://www.vtac.edu.au).

### APPLY FOR CREDIT

To apply for credit visit [monash.edu/admissions/credit](https://monash.edu/admissions/credit).

### DEFER YOUR STUDIES

Monash generally allows deferment of study up to a maximum of twelve months, or longer in exceptional circumstances. If you decide to delay your course commencement send your deferral request to [mu.documents@monash.edu](mailto:mu.documents@monash.edu).


Other guidelines apply, visit: [monash.edu/defer](https://monash.edu/defer)


### NEED HELP WITH YOUR APPLICATION?

If you're applying through a Monash agent contact them for assistance. Some Monash agents may charge a fee for additional services. For a list of Monash agents visit, [monash.edu/study/agents-database](https://monash.edu/study/agents-database).

Contact us:

 [monash.edu/study/enquiries](https://monash.edu/study/enquiries)

 +61 39903 4788

 Chat with Monash

## APPLICATION PROCESS

**1 Apply online:** Apply for your preferred course at [monash.edu/admissions/apply/online](https://monash.edu/admissions/apply/online). You'll also need to provide additional documents to support your application that may require certification and/or translation, visit [monash.edu/study/certifying-documents](https://monash.edu/study/certifying-documents).

**2 Your application is assessed:** We determine whether you've met the University entry requirements, and if successful you'll receive an offer known as an International Student Course Agreement (ISCA). Monash also checks whether you're a genuine student seeking entry to Australia to study, visit [monash.edu/study/visa-requirements](https://monash.edu/study/visa-requirements)


**3 Accept your offer:** Follow the instructions in your ISCA. You must complete, sign and return all pages in Part A of your ISCA, along with payment and provide a copy of the personal details page of your passport to Admissions BEFORE the offer lapse date.

**4 Receive a Confirmation of Enrolment (CoE) and enrol online:** Once your acceptance has been processed, you'll receive an electronic CoE and an invitation to set up your Monash account to enrol in your course online. You'll need to plan your course and enrol early so that you can get the best possible start.

**5 Arrange your student visa:** You'll need the CoE to apply for your student visa with the Department of Home Affairs (DHA) for study in Australia<sup>1</sup>. When applying for your student visa, you'll need to meet all core visa criteria, such as the genuine student requirement, good character and health criteria. Financial capacity documentation may also be required. You'll also need to satisfy English requirements set by DHA where these requirements may differ from Monash. If you're under 18 years of age when you start your course, you need to have your caregiver and accommodation arrangements approved before applying for your student visa, visit [monash.edu/students/under-18](https://monash.edu/students/under-18).

For more information visit:  
[monash.edu/study/visa-requirements](https://monash.edu/study/visa-requirements)  
[monash.edu/connect/student-visa](https://monash.edu/connect/student-visa)

**6 Planning your arrival:** Participate in the pre-arrival briefing, book your airport reception, research your accommodation options, and attend Orientation week. Use a checklist to ensure you've completed essential tasks before you start your course at Monash.

 **CLICK HERE**  
for more information on our application process

<sup>1</sup> You're advised not to commence the visa application process until you've been issued with your CoE. Your student visa application may take up to six months or more, depending on your nationality and country of residence.

## FEES

To study at Monash University, you'll need to pay tuition fees to the University. As an international student, you'll be charged full fees. Tuition fees vary depending on the course and the year of commencement. All tuition fees and course durations specified in this guide are in Australian dollars and only apply to courses studied at Australian campuses. The tuition fees quoted are for 48 credit points and are applicable to courses commencing in 2024. Tuition fees for courses commencing in 2025 will be different. Monash University reserves the right to adjust the annual tuition fees in future years of your course. Any adjustment will be applied on the first day of January each year for teaching periods with a census date thereafter.

[monash.edu/scholarships-fees](https://monash.edu/scholarships-fees)

 **CLICK HERE**  
for more information

## OVERSEAS STUDENT HEALTH COVER

It's a condition of the Student Visa (subclass 500) that you must hold Overseas Student Health Cover (OSHC) for the duration of your stay in Australia. Monash University requires all commencing international students to purchase OSHC for the duration of their visa. If you're accompanied by immediate family to Australia as dependants on your student visa, you'll also need to purchase the visa-length OSHC for them. Your Confirmation of Enrolment (CoE), for student visa purposes, will only be issued:

- once you've accepted your course offer along with payment for OSHC; or
- once you've provided proof of having a valid visa-length OSHC; or
- once you've submitted approved documentation for exemption from payment of OSHC.

[monash.edu/fees/oshc](https://monash.edu/fees/oshc)





**CLICK HERE**  
to explore our digital course guide

**MONASH UNIVERSITY**  
monash.edu

**FIND A COURSE**  
monash.edu/study

**FUTURE STUDENT ENQUIRIES**  
Australian citizens, permanent  
residents and New Zealand citizens  
monash.edu/about/contact-us

**International students**  
T Australia freecall: 1800 MONASH (666 274)  
T +61 3 9903 4788 (outside Australia)  
E study@monash.edu

