



ENGLISH FOR LIFE

www.elsis.edu.au

SYDNEY | BRISBANE | MELBOURNE

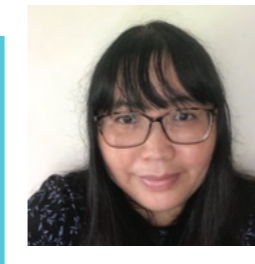


ENGLISH LANGUAGE
SCHOOLS

CONTENTS

WHY STUDY AT ELSIS?	4
STUDENT TESTIMONIALS	5
INFORMATION ABOUT BRISBANE CAMPUS	8
INFORMATION ABOUT SYDNEY CAMPUS	10
INFORMATION ABOUT PARRAMATTA CAMPUS	12
INFORMATION ABOUT MELBOURNE CAMPUS	14
COURSE PROGRESSION	16
TIMETABLES	17
GENERAL INTENSIVE ENGLISH (GIE)	18
PRONUNCIATION FOR EFFECTIVE COMMUNICATION	19
INTERNATIONAL ENGLISH LANGUAGE TESTING SYSTEM (IELTS)	20
ENGLISH FOR ACADEMIC PURPOSES (EAP)	22
CAMBRIDGE ENGLISH EXAM PREPARATION (CEE)	24
PATHWAYS FROM ELSIS	26
ENGLISH FOR WORK	28
SPECIALISED ENGLISH CLASSES (SEC)	30
ELSIS PLUS WORKSHOPS	32
SOCIAL ACTIVITIES	34
2STAY ACCOMMODATION	36
ELSIS TEAM	37

WELCOME TO ELSIS



Welcome to ELSIS!

At ELSIS, we believe in supporting students throughout their learning journey. We want students to thrive while they're with us and to develop not only their English-language skills but their confidence as well. To ensure this, we have a dedicated Student Services team who are ready to help students in a caring and supportive manner. Our teachers are qualified and experienced but most importantly, invested in each student's educational success.

We pride ourselves in offering a friendly yet professional environment to our students, and each day we look forward to enhancing the student experience.

Kathleen Villadiego

Director of Studies

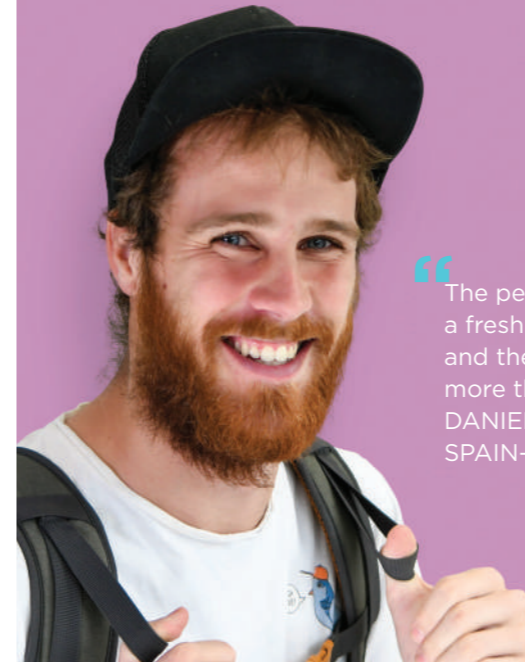
WHY STUDY AT EL SIS?

- Timetable flexibility! You can choose to study in the morning, afternoon or evening
- We help you design the study plan that suits your goals before arriving in Australia
- If your study plan changes upon arrival, we are ready to help you with a new study plan
- Direct entry to Victoria University, Swinburne University and Asian Pacific College when you successfully complete our EAP course
- Pathways to a range of universities and colleges in Australia
- You can transfer from one city to another with NO extra charges
- ELSIS Plus Workshops available daily and designed to help you meet your goals

“ I really love the workshops. ELSIS provides a different range of workshops every afternoon, which is helpful for me, because if I need more help or if I want to improve my pronunciation I can attend.
EDERSON JOELSON
BRAZIL - SYDNEY ”



STUDENT TESTIMONIALS



“ The people, everybody has a fresh vitality, always happy and the classes are fun. It's more than English, it's living it.
DANIEL CIERO SIRVIENTE
SPAIN- MELBOURNE ”

“ I decided to study in ELSIS because I was impressed with teachers and classmates when I took a trial lesson. Also ELSIS staff are very good !!
NATSUMI KANO
JAPAN - SYDNEY ”



“ Since I have been in ELSIS I have only had a great experience, because the staff are very friendly, helpful and highly focused on teaching.
MIHELCA GUSTIN
SLOVENIA - SYDNEY ”



“ it is a great opportunity to improve my English skills. I like ELSIS because I'm not just studying, we are also learning English through activities and social activities. I'm having so much fun and a really good experience.
PARIN
THANAVATANACHAVOEN
(BLESS)
THAILAND - MELBOURNE ”

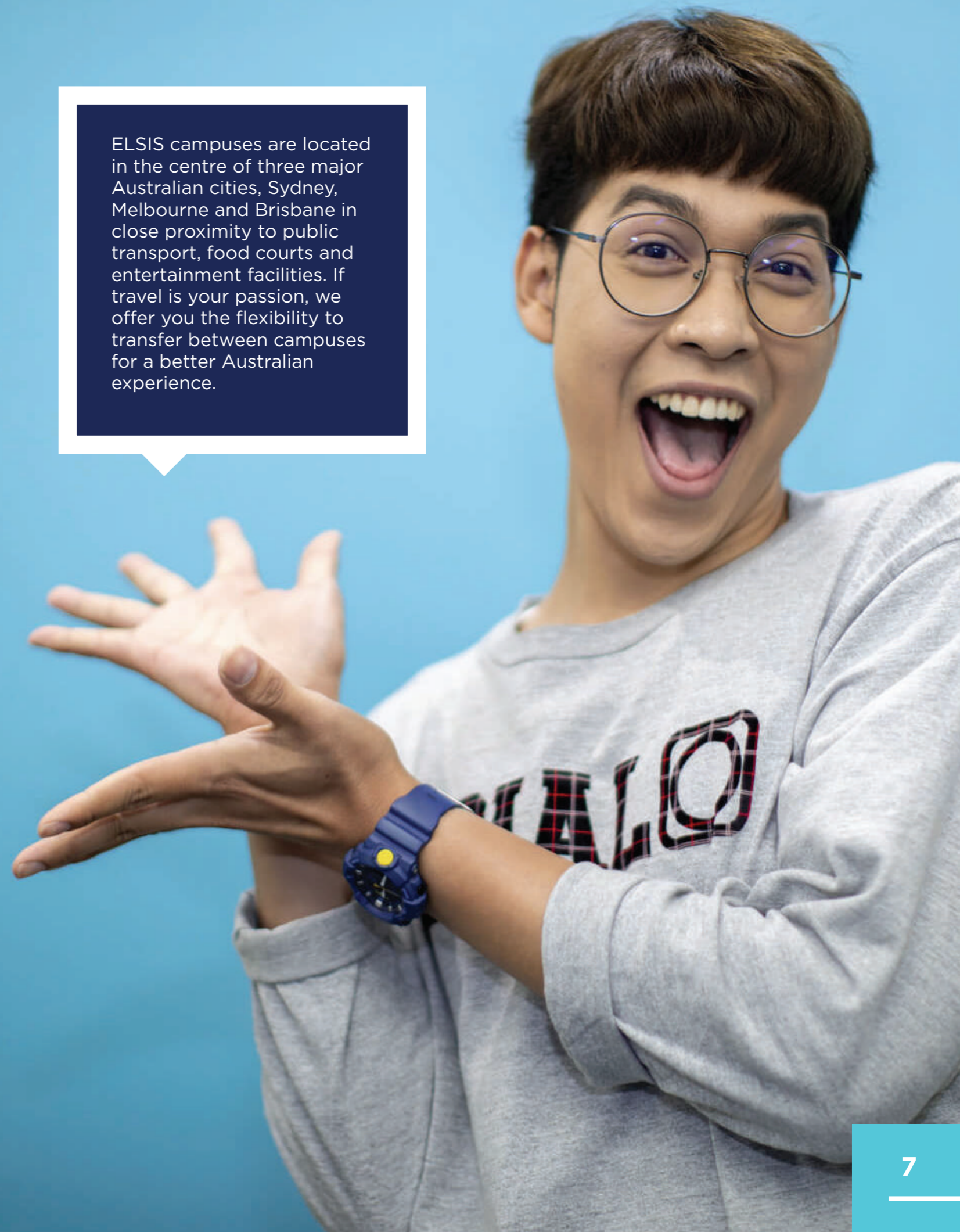
“ The most important characteristic that I decided to study at ELSIS is because it is in the city, and has different alternatives of English courses.
ANDREA ZARATE
ECUADOR - BRISBANE ”





**BRISBANE
SYDNEY
MELBOURNE**

EL SIS campuses are located in the centre of three major Australian cities, Sydney, Melbourne and Brisbane in close proximity to public transport, food courts and entertainment facilities. If travel is your passion, we offer you the flexibility to transfer between campuses for a better Australian experience.



Information about **BRISBANE CAMPUS**

Brisbane Campus

With a central city location, our Brisbane campus is in short walking distance to the famous Botanical gardens and South Bank where you can enjoy the amazing parklands, river views, exquisite restaurants and entertaining facilities. Our campus is easily accessible and close to public transport as well as the city's major shopping district.

Why Choose Brisbane?

- Brisbane is famous for its warm weather all year round.
- Brisbane city has amazing parks which are ideal for picnics.
- Enjoy the drive to the famous Surfers Paradise.
- Enjoy the amazing costal Scenic drives with stunning forest and beach views.
- Brisbane is the home of amazing events including the spectacular Riverfire, the famous EKKa and for sports lovers, the State of Origin.



Information about **SYDNEY CAMPUS**

Sydney Campus

Our Sydney Campus is located in the heart of the city in close proximity to public transport, Darling Harbour, World Square and Hype Park. With easy access to public transport, students can take a bus to major Australian beaches and parks.

Our campus offers modern educational facilities designed to meet the needs and requirements of our students including advanced computer labs, comfortable breakout areas and modern kitchen facilities with lots of space to socialise.



Why Choose Sydney?

- Sydney is one of the world's most cosmopolitan cities.
- With an extensive variety of restaurants, cafes and cultural attractions, Sydney has something for everyone.
- Sydney's natural environment consists of a unique range of native plants and animals.
- Sydney is an exciting, safe and clean place to live in.
- Sydney offers a range of services available for international students.
- Sydney is famous for its beautiful beaches and parks, which provide the perfect setting for outdoor activities.



Information about **PARRAMATTA CAMPUS**

Parramatta Campus

With a prominent city location, ELSIS Parramatta campus is in the heart of Paramatta city—a beautiful, green, satellite city in Sydney, NSW.

Our Campus is very close to Paramatta station and Westfield shopping centre. A 25-minute train trip and you will find yourself in the centre of Sydney City.

Featuring state-of-the-art facilities, including modern classrooms, high-tech labs, a spacious breakout area, and easy access to Paramatta library, our campus has a lot to offer.



Why Choose Parramatta?

- Located on the west of the Sydney business district on the banks of the Paramatta river.
- Paramatta is famous for its cultural diversity and vibrant festivals, which includes the annual Sydney Festival, Winterlight, and Parramasala.
- An affordable city offering a high quality lifestyle.
- There are more than 18 parks surrounding our new facilities – covering more than 23 per cent of the total area.
- Dine at world famous restaurants and experience cultural diversity at its best.



Information about **MELBOURNE CAMPUS**

Melbourne Campus

Our Melbourne campus is located on a buzzing street surrounded by funky cafes and restaurants. Our Campus is modern, featuring a comfortable student lounge area, classes with city views and a cozzie kitchen with modern facilities.



Why Choose Melbourne?

- Melbourne has been voted as the world's most liveable city.
- Melbourne is packed with culture, fun, music, sports and comedy.
- Melbourne is the Food Capital of Australia offering a range of cuisines from many of our 200 nationalities.
- Enjoy free public transport throughout the city centre.
- For the sport lovers, Melbourne provides access to international sporting events like the F1 Grand Prix, Australian tennis and international rugby.
- Our greater regional Victoria provides diverse landscapes including snow-capped mountains, amazing oceans, striking desert regions, and charming historic towns.



COURSE PROGRESSION

GENERAL ENGLISH

1

Beginner
12 weeks

GENERAL ENGLISH

2

Elementary
12 weeks

GENERAL ENGLISH

3

Pre-Intermediate
12 weeks

PRONUNCIATION

6 weeks

CAMBRIDGE EXAM PREPARATION

B1 (PET)
10-12 weeks

GENERAL ENGLISH

4

Intermediate
12 weeks

IELTS EXAM PREPARATION

12 weeks

CAMBRIDGE EXAM PREPARATION

B2 (FCE)
10-12 weeks

GENERAL ENGLISH

5

Upper Intermediate
12 weeks

ENGLISH FOR ACADEMIC PURPOSES

EAP 1
Upper-Intermediate
12 weeks

Preliminary EAP
Grade B
6 weeks

CAMBRIDGE EXAM PREPARATION

C1 (CAE)
10-12 weeks

GENERAL ENGLISH

6

Advanced
12 weeks

ENGLISH FOR ACADEMIC PURPOSES

EAP 2
Advanced
12 weeks

Preliminary EAP
Grade A
6 weeks

TIMETABLES

While we try to give you your preference, there is no guarantee of you getting your choice of time.

Times may be changed at our discretion.

MORNING

Times	Monday to Friday
8:15 to 10:15	Lesson 1
10:15 to 10:30	Break
10:30 to 12:30	Lesson 2

AFTERNOON

Times	Monday to Friday
12:40 to 2:40	Lesson 1
2:40 to 3:00	Break
3:00 to 5:00	Lesson 2

EVENING

Times	Monday to Friday
5:10 to 7:10	Lesson 1
7:10 to 7:30	Break
7:30 to 9:30	Lesson 2



“ ELSIS staff are excellent as they not only help us in improving our English level, but they also help us in preparing for University and the corporate environment. ”

SAURABH CHAUHAN
INDIA - SYDNEY

GENERAL INTENSIVE ENGLISH (GIE)

CRICOS Course Code: 054514E

Key Facts

Your English-language level will be assessed upon enrolment and you will be placed in the General English class that best suits your English abilities.

Course duration	2 - 84 weeks
Levels (6)	Beginner, Elementary, Pre-intermediate, Intermediate, Upper-intermediate, Advanced
Class size	Average 15 / Maximum 18
Minimum age	18
Entry requirement	None
Enrolment	Any Monday

Our General Intensive English course is recommended as the first step in language learning. For those just starting out with English, General Intensive English gives you a solid grounding in grammar and social and functional communication.

General Intensive English allows you to improve your communication skills for everyday situations. You learn new vocabulary, idioms and Australian culture. All of this takes place in a fun learning environment.

Why Study the General Intensive English Course with ELSIS?

- Study English in a fun and relaxed environment.
- Meet people from all over the world.
- Weekly check tests and fortnightly one on one feedback sessions with your teacher.
- Access to a range of workshops designed to help you improve quickly and enrich your experience.
- Access to a range of extra-curricular activities and excursions.
- Flexible timetable options - morning, afternoon and evenings (if available).

PRONUNCIATION FOR EFFECTIVE COMMUNICATION

CRICOS Course Code: 062241C

Key Facts

Course duration	6 weeks
Levels	Intermediate to Upper-intermediate
Class size	Average 15 / Maximum 18
Minimum age	18
Entry requirement	Pre-entrance test or intermediate level at ELSIS
Enrolment	Every 6 weeks

Pronunciation for Effective Communication:

- This six-week course is designed to improve students' English pronunciation and help them improve their speaking and listening skills.
- The purpose of this course is to familiarise students with features of English pronunciation. Students will learn how to produce English sounds accurately.

Students need to be at an intermediate level or above to participate in this course.

Learning Outcomes

Students who undertake this course will:

- Feel more confident in using spoken English.
- Produce natural English rhythm and intonation.
- Feel more confident when communicating with native and non-native speakers of English.
- Develop their listening skills.

MONDAY	TUESDAY	WEDNESDAY	THURSDAY	FRIDAY
Vocabulary Introduction to the week's topic	Reading and Discussion	Speaking practise	Writing Skills Sentence Structure	Video & Discussion
Reading and Discussion	Vocabulary and word building	Reading and Critical Thinking	Word order in a sentence	
Speaking and Pronunciation	English Grammar Theory & Practise	Vocabulary & Pronunciation	English Grammar Theory & Practise	Weekly check and one on one Feedback
Real Life Practise the vocabulary in real life situations	Listening Practise	Role play	Listening Practise	

Sample timetable

MONDAY	TUESDAY	WEDNESDAY	THURSDAY	FRIDAY
Mouth diagram Introduction to the sounds (materials: paddle pop sticks)	Vowels /æ/ (man)/	Consonants /l/ (letter)	Consonants	Voice Diary Students review the vocabulary and establish their own dictionary
	Practise using vowels	Practise using consonants	Practise using consonants	
Listening for Intonation	Intonation Question Forms	Role Play Focus on intonation and accurate pronunciation	Presentation My Journey Story	Feedback
Practise Intonation	Practise Question forms			

Sample timetable

INTERNATIONAL ENGLISH LANGUAGE TESTING SYSTEM (IELTS)

CRICOS Course Code: 062241C

Key Facts

Course duration	2 - 24 weeks
Levels	Intermediate to Upper-intermediate
Class size	Average 15 / Maximum 18
Minimum age	18
Entry Requirements	IELTS 4.5 or equivalent An ELSIS student at an intermediate level or above Pre-entrance test at an intermediate level and above
Enrolment	Any Monday

Preparation Course for The International English Language Testing System

This is an Examination Preparation course which equips students to take the internationally recognised International English Language Testing System (IELTS) examination. The course includes authentic IELTS-style examinations which students take every 3 weeks.

The IELTS Certificate is recognised as a means of entry to vocational and university courses or to apply for visas and for immigration purposes.

- The ELSIS IELTS Preparation course includes General and Academic IELTS and students have the option of studying in the morning or in the evening (if available).

- The course runs over a period of 12 weeks, and has a weekly intake allowing students to enter the class at any time.
- This course is also a great challenge for students wishing for a more intensive course of study.
- Students need to be level 4 (Intermediate Level) or above to participate in the IELTS class.

Skills Include

- Writing, reading, listening, note taking and speaking
- Study skills
- IELTS exam preparation and practice test

Learning Outcomes

Students who undertake the full course will gain:

- An understanding of the exam's structure
- Strategies for the exam: timing, organisation, etc
- Competency in the four exam skills
- A better understanding of grammar, vocabulary, functions, register and discourse
- The main vocabulary used in the exam's themes
- Development of speaking fluency and accuracy
- Students are assessed at regular intervals and are well-prepared for the demands of academic studies.



MONDAY	TUESDAY	WEDNESDAY	THURSDAY	FRIDAY
Vocabulary Commenting on graphs	IELTS Reading Strategies Skimming and Scanning	Describing Process from Pictures	IELTS Academic Practise Test (Reading, Writing and Listening)	Speaking Test Practise
Writing- Task 1 Describing Bar Charts	IELTS Reading Practise	IELTS Writing Theory Process structure		
Listening Describing bar charts and line graphs	Listening For specific information	IELTS Writing Practise Writing a process	IELTS Academic Practise Test (Reading, Writing and Listening)	Test Feedback
Speaking Comparing bars and graphs	Grammar for IELTS			

Sample timetable

ENGLISH FOR ACADEMIC PURPOSES (EAP)

EAP CRICOS Code: 058166K

Preliminary EAP CRICOS Code: 098573G

Key Facts

Course duration	12 - 24 weeks per level
Levels (2)	Preliminary EAP- Pre-intermediate/ Intermediate EAP1- Upper-intermediate EAP2- Advanced
Class size	Average 15 / Maximum 18
Minimum age	18
Enrolment	Fixed start dates

This course provides students with the necessary skills required to adapt and cope with vocational and university requirements by exposing them to real academic life in Australia. During this course students will practise lecture note-taking skills, referencing, summarising and paraphrasing, giving presentations, academic research and integrity, essay and report writing as well as discussions and debating.

Learning Outcomes

- Critically evaluate and analyse a variety of complex academic texts.
- Understand and evaluate written and spoken text.
- Produce academic essays and reports based on research.
- Understand and apply academic referencing conventions.
- Understand lectures and listening activities at a university level.
- Prepare and deliver oral presentations as required at a university level.

Pathways

Pathways available to VU Sydney, Swinburne University of Technology Sydney and APIC. Please see page 26 and 27 for more information.

English for Academic Purposes

EAP is a preparation course designed for students who wish to study at one of the universities and colleges affiliated with the school.

EAP Levels and Entry Requirements:

Course Code	Course	Course contact hours	Duration	Entry levels	Exit level and entry into
098573G	Preliminary EAP	20 hrs. per week	6 weeks	IELTS 4.5 or equivalent An ELSIS Intermediate Certificate	IELTS 5.0 or equivalent A minimum B grade allows entry to EAP1 An A grade allows entry to EAP2
085166K	EAP1	20 hrs. per week	12 weeks	IELTS 5.0 or equivalent An ELSIS Intermediate Certificate with a grade A	IELTS 5.5 or equivalent A minimum B grade allows entry to VET courses and EAP 2
058166K	EAP2	20 hrs. per week	12 weeks	IELTS 5.5 or equivalent for undergraduate courses An ELSIS Upper-intermediate Certificate with a minimum grade B	IELTS 6.0 or equivalent A minimum B grade allows entry to undergraduate courses
			20 hrs. per week	IELTS 6.0 or equivalent for postgraduate courses An ELSIS Upper-intermediate certificate with a grade A	IELTS 6.5 or equivalent An A grade allows entry to postgraduate courses

*There may be further entry prerequisites associated with individual colleges/universities with whom ELSIS has established pathway agreements. Please check our pathway page and your prospective pathway institution for further details.

www.elsis.edu.au



MONDAY	TUESDAY	WEDNESDAY	THURSDAY	FRIDAY
CI - Course Introduction Lesson objective: An introduction to the EAP 2 course	AR - Academic Reading Lesson objective: Applying reading strategies to academic text	RS - Research skills Lesson objective: Understanding research	AWT - Academic Writing Theory Lesson objective: Brainstorming and creating mind maps	AWW - Academic Writing Workshop Lesson objective: Writing a paragraph
SP - Speaking and Presentations Lesson objective: Practicing a short presentation	AL - Academic Listening Lesson objective: Applying note-taking skills	SP - Speaking and Presentations Lesson objective: Participating in academic discussions	AWE - Academic Writing exercise Lesson objective: Understanding paragraph structure and unity	CF - Consultation and Feedback Lesson objective: Provide feedback on academic writing exercise

Sample timetable

CAMBRIDGE ENGLISH EXAM PREPARATION

CRICOS Course Code: 096284M

PET Course Code: 068411G

FCE Course Code: 062240D

CAE Course Code: 063235D

CEE Course Code: 096284M

Key Facts

Course duration	10 - 12 weeks
Levels (3)	B1 (PET) B2 (FCE) C1 (CAE)
Class size	Average 12 / Maximum 18
Minimum age	18
Enrolment	Fixed start dates (January, March, June and September)



Cambridge Exam Preparation Courses Entry requirements

CRICOS Code	Course	Entry Requirements	Course Duration	Course Contact Hours
096284M	Preparation Course for the Cambridge English Examinations (CEE) (Pre-intermediate to Advanced)	An ELSIS GE student at a solid pre-intermediate (A grade) and above Completion of ELSIS English Placement Test at a solid Pre-intermediate level and above An IELTS 4.5 or equivalent	2- 48 weeks	20 hours per week
068411G	Preparation Course for the Cambridge Preliminary English Test (PET) (Pre-Intermediate to Intermediate)	An ELSIS GE student at a solid pre-intermediate (A grade) or intermediate level Completion of ELSIS English Placement Test at a solid pre-intermediate (A grade) or an intermediate level IELTS 4.5 or equivalent	10-12 weeks	20 hours per week
062240D	Preparation Course for the Cambridge First Certificate in English (FCE) Test (Upper Intermediate)	An ELSIS student at an upper-intermediate level Completion of ELSIS English Placement Test at an upper-intermediate level IELTS 5.0 or equivalent	10-12 weeks	20 hours per week
063235D	Preparation Course for the Cambridge Certificate in Advanced English (CAE) (Upper Intermediate to Advanced)	An ELSIS student at a solid upper-intermediate (A grade) or advanced level Completion of ELSIS English Placement Test at an upper intermediate level (A grade) and above IELTS 5.5 or equivalent	10-12 weeks	20 hours per week

Learning Outcomes

Students who undertake the full-length 10-12 weeks of the course will gain:

- Knowledge of test-taking techniques specific to B1 (PET), B2 (FCE), and C1 (CAE).
- Knowledge of text types, e.g. formal and informal letters, narratives, reports and articles.
- Improved listening skills.
- Improved reading skills for a variety of genres.
- Improved speaking skills.
- A greater awareness of word families and word formation.
- The ability to analyse texts grammatically and to transform sentences so as to express the same meaning in different form.
- Development of speaking fluency and accuracy
- Students are assessed at regular intervals and are well prepared for the demands of the Cambridge exam

Cambridge exams

- The exams are internationally recognised and useful for students who need to use English in their workplace.
- The exams consist of five papers: Reading, Writing, Speaking, Listening and Use of English. The course develops and improves skills in all five areas.
- Opens new opportunities + study pathways to colleges and universities around the world as well as for visa applications and for immigration purposes.
- Certificates are valid for life.



MONDAY	TUESDAY	WEDNESDAY	THURSDAY	FRIDAY
Reading Test Tips Reading test techniques	Cambridge Listening tips How to listen for the right information	Speaking Test Tips Giving enough information	Cambridge Listening Infer context from listening texts	Reading Practise
Reading Practice	Cambridge Listening practise	Speaking practise	Cambridge Speaking	Vocabulary in context
Use of English Using the right word to complete sentences	Cambridge Writing Tips How to write a formal letter	Vocabulary for Cambridge Phrasal verbs and collocations	Use of English Word formation	Cambridge Writing practise
Speaking Test Tips and Practise How to avoid stress before and during the speaking test	Cambridge Writing Practise In class writing	Cambridge Reading Practise Understanding vocabulary in content	Grammar Forming nouns and adjectives	Feedback

PATHWAYS FROM ELSIS

If you would like to further your studies after completing your course at ELSIS, there are many options available to you. After completing an IELTS, General English Upper Intermediate or an English for Academic Purposes (EAP) course and achieving the required level, you may be eligible to study the courses outlined in the diagram.

Once you have achieved this, you can take your studies even further. The diagram on the next page shows the various pathways available through the Education Centre of Australia.

If you would like to discuss your study plans in further detail with an educational consultant, please contact us using the details provided on the back cover of this brochure.



Other Articulation Pathways:

From more information on ELSIS pathways visit:
www.elsis.edu.au/study-pathways/





What is English for Work?

English for Work is a set of workshops and Specialised English Classes (SEC) designed to help students understand Australian workplace requirements, learn the target language used in specific work fields, and assist students in finding jobs in Australia.

English for Work workshops:

English for Work workshops run once every three weeks. They are a series of workshops running five days a week, Monday to Friday.

English for Work workshops will help students:

- Understand Australian workplace culture.
- Improve communication and job interview skills.
- Produce an effective cover letter & resume designed to get results.
- Enhance job application skills and boost knowledge about useful Australian job search engines.

English for Work Workshops Timetable:

TIME 1:30PM-2:30PM	
Weekday	Workshops
Monday	Australian Workplace Communication and Culture
Tuesday	Interview Skills
Wednesday	Cover Letters and Resumes
Thursday	Job Search
Friday	Job Application Assist

English for Work: Specialised English Classes (SEC)

SECs run from 1:30pm to 2:30pm, Monday to Friday. Each SEC duration is 12 weeks with a total of 60 hours. Students who are at an intermediate level and have a 24-week enrolment can enroll in a maximum of two SEC courses each being 12 weeks.

Who can enroll in SEC?

To enroll in SEC students must:

- be enrolled in a General English or a Cambridge course at ELSIS
- be enrolled for a minimum of 4 weeks
- meet the language entry requirements

What do students gain with this package?

- Receive a letter of recognition with learning outcomes and number of hours studied
- Receive a General English or a Cambridge certificate
- Learn English related to their career or fields of study

SPECIALISED ENGLISH CLASSES (SEC)



ENGLISH FOR BUSINESS

Entry Level: Intermediate and above.

Students who attend these classes will learn:

- Vocabulary used in business, words related to trade, finance and idioms for talking about business relationships
- How to write formal business letters
- How to make business phone calls
- How to negotiate and arrive at agreements
- How to chair business meetings and how to take part in business discussions

TIME 1:30PM-2:30PM

Weekday	Sample Timetable
Monday	Vocabulary Topic: Business Travel Lesson Focus: British and American Words used on business trips
Tuesday	Listening Topic: Business Travel Lesson Focus: How a company meets the needs of business travelers
Wednesday	Case Study Topic: retaining a key client Lesson Focus: Setting up a meeting, giving accurate information.
Thursday	Writing Topic: Formal apology email Lesson Focus: Apologising for inconvenience and offering compensation
Friday	Speaking Topic: Telephoning and making arrangements Lesson Focus: Role play telephone situations using a list of useful phrases.



ENGLISH FOR IT

Entry Level: Intermediate and above.

Students who attend these classes will learn:

- Vocabulary used in IT. For example: computer parts, computer applications, operating systems
- How to describe IT functions
- How to write a process using technical language
- Communication skills for IT professionals.

TIME 1:30PM-2:30PM

Weekday	Sample Timetable
Monday	Listening Topic: Computer users Lesson Focus: Predicting the speaker's jobs and learning phrases used to describe computers.
Tuesday	Reading Topic: Computers make the world smaller and smaller Lesson Focus: Understanding the function of computers in our modern life.
Wednesday	Writing Topic: Describing computer parts Lesson Focus: Using descriptive language to write a paragraph on computer parts.
Thursday	Vocabulary Topic: Graphical user interface (GUI) Lesson Focus: Learn the name of functions seen on computer desktops
Friday	Speaking Topic: Problem Solving Lesson Focus: Using technical language to solve an IT related problem



ENGLISH FOR ENGINEERING

Entry Level: Intermediate and above.

Students who attend these classes will learn:

- Vocabulary used in engineering. For example: describing functions, describing features, describing systems, etc.
- How to talk about technical advantages of engineering projects
- How to describe the causes and faults of technical problems
- Communication skills for Engineers

TIME 1:30PM-2:30PM

Weekday	Sample Timetable
Monday	Vocabulary Topic: Describing technical functions Lesson Focus: Phrases for referring to quality.
Tuesday	Listening Topic: A safety meeting Lesson Focus: Understanding the meaning of phrases used in explaining safety procedures.
Wednesday	Writing Topic: Describing engineering materials Lesson Focus: Using descriptive language to write about common materials used in engineering.
Thursday	Reading Topic: Materials recycling Lesson Focus: Reading an article on braking systems and answering comprehensive questions.
Friday	Speaking Topic: Describing objects Lesson Focus: Describing objects using words from a box.



ENGLISH FOR FARMING

Entry Level: Pre-intermediate and above.

Students who attend these classes will learn:

- The vocabulary used for farming and agriculture
- The verbs used to describe farming activities
- How to communicate with your supervisor and co-workers.

TIME 1:30PM-2:30PM

Weekday	Sample Timetable
Monday	Listening Topic: A farmer describing a flood Lesson Focus: Understanding the event and learning new vocabulary
Tuesday	Reading Topic: A farm is a great place to work Lesson Focus: Learning about farmer duties
Wednesday	Writing Topic: Describe a farm you want to work at Lesson Focus: Using adjectives to describe an ideal farm
Thursday	Vocabulary Topic: Farming tools Lesson Focus: Learn the name of tools used in farming
Friday	Speaking Topic: A conflict at work Lesson Focus: Discuss problems farms might face in pairs and find solutions

EL SIS PLUS WORKSHOPS



Every week you will have the opportunity to participate in a range of free workshops designed to help you increase your language proficiency and help you adapt to life in Australia.

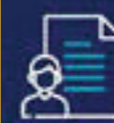
All workshops run in the afternoon and are free for students.

Workshops are subject to change depending on student request. These are some of the workshops available at ELSIS:



HOSPITALITY

Learn tray service, wine service, plate carrying, function workflow, table setting, taking orders, hospitality vocabulary and a lot more.



COVER LETTERS AND RESUMES

This workshop is for students who want to learn how to write a cover letter and a resume which meet Australian employment standards. Students will also learn the skill necessary to find employment in Australia.

IELTS IELTS PRACTICE TEST

A great opportunity to practice IELTS Listening and Reading under examination conditions. Excellent preparation for students who intend to take the IELTS test.



PRONUNCIATION

Learn to enhance your English pronunciation using Australian intonation, stress patterns and rhythm to speak clearly and confidently while also improving your Listening skills.



COFFEE CONVERSATION

A great chance to have a coffee while speaking English. This can be at school or outside in a café. It is a chance to make friends and learn how to speak appropriately in different situations.



ONE-ON-ONE

Personalised (20 minutes) individual tutorial sessions with teachers, to work on any academic area. Students often refresh grammar points or practice vocabulary. It is up to you.



JOB SEARCH

Upon completion of the cover letters and resumes workshop students are advised to attend the job search workshop. This workshop focuses on introducing students to job search websites, teaching them how to select jobs relevant to their experience and guiding them through the job application process



GRAMMAR PRACTICE

This workshop is for students who want to improve their English grammar. Each session focuses on a grammar concept. Students practise using the grammar in real life situations.



TED TALKS AND DISCUSSIONS

Listen to an interesting TED presentation and discuss with a group.

SOCIAL ACTIVITIES

Wilsons Promontory
VIC



ELSIS offers a range of exciting and educational activities on a regular basis. We believe that this is important for learning English effectively, so that students may become part of a wider social network in their new life in Australia.

Extended school trips include weekend camping trips to picturesque beach destinations such as Ulladulla, which is just a few hours out of Sydney.

Shark Island
NSW



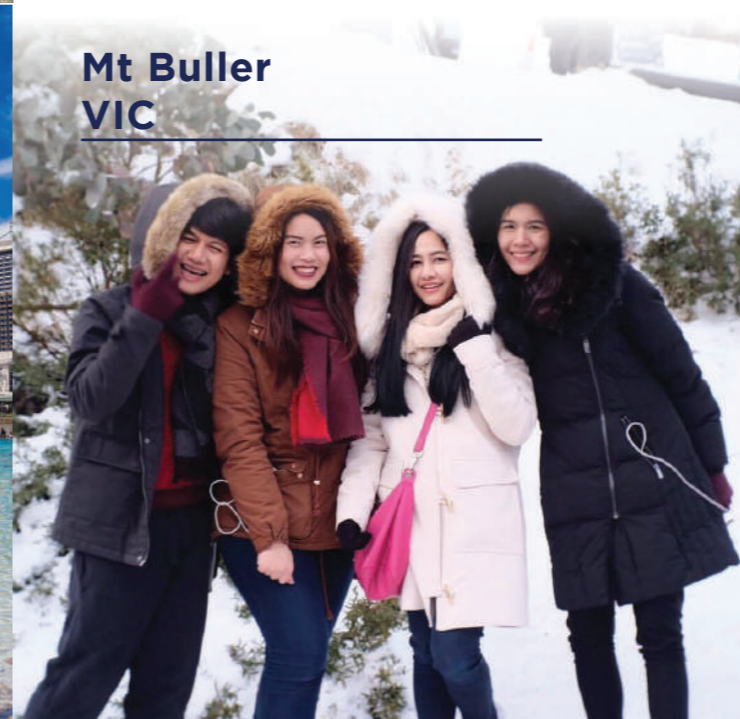
Surf Camp
NSW



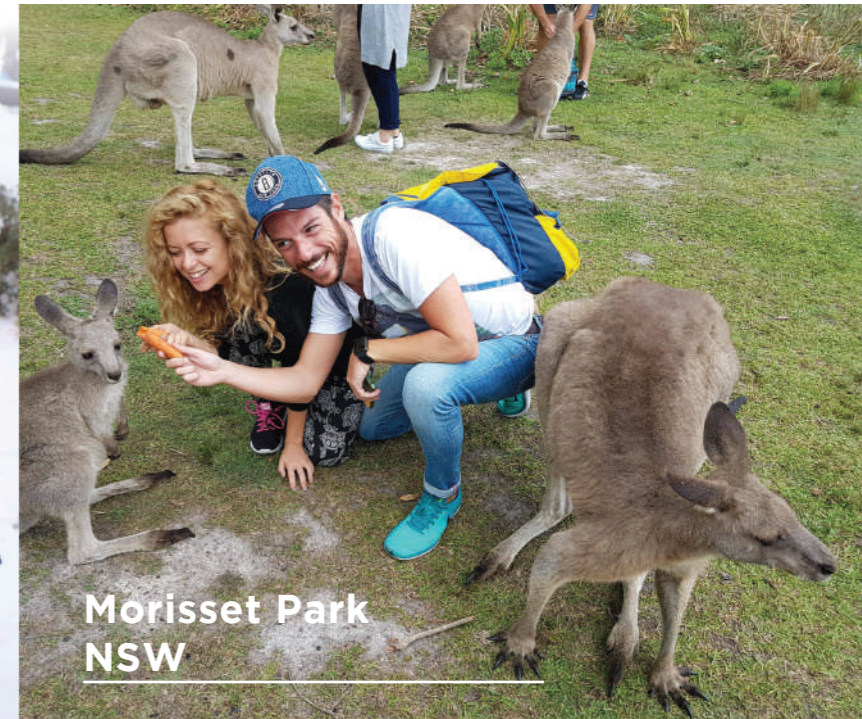
Southbank
QLD



Mt Buller
VIC



Morisset Park
NSW



ACCOMMODATION

Sydney, Melbourne and Brisbane

We aim to ensure a comfortable stay for students in Sydney, Melbourne and Brisbane.

Our accommodation is divided into Residence and Homestay. Apart from our accommodation options, we also offer an airport pick-up service, collecting you from Sydney, Melbourne or Brisbane Airport and transporting you directly to your accommodation destination. We can also arrange transfer back to the airport at the end of your stay. For your peace of mind, all our drivers carry identification. All bookings can be made by agencies through our online booking system. You will receive all the information necessary for airport pick-up, if required, and a complete profile with rules, photos, location and transport details for both residence and homestay accommodation.



SHARE HOUSE HOMESTAY AIRPORT PICK UP

For more information please visit:

WWW.2STAY.COM.AU

STUDENT SERVICES

You will meet our friendly Student Services team on your very first day. They can help you with any questions you may have about Australia and your English-language courses.

Our Student Services officers will guide you in the right direction. On your first day they will take your photograph for your ELSIS Student Card and introduce you to the college environment. If you have questions related to opening a bank account, arranging a tax file number or obtaining a mobile phone/sim card, then they are the people who can help you.

Very soon ELSIS will feel like your second home because of its warm and welcoming atmosphere.

STUDENT ENGAGEMENT

Each campus has a Student Engagement Officer who will help you settle in. They look after all Social aspects during your time at ELSIS. So fun and socialising is guaranteed.

THE ELSIS TEACHING TEAM

Our teachers are university educated and hold specialist qualifications in English-language teaching. Ongoing professional development ensures our teachers are always up-to-date with the latest teaching methodologies.

In addition to the Director and Associate Director of Studies, there are level coordinators available to help you and answer your questions.

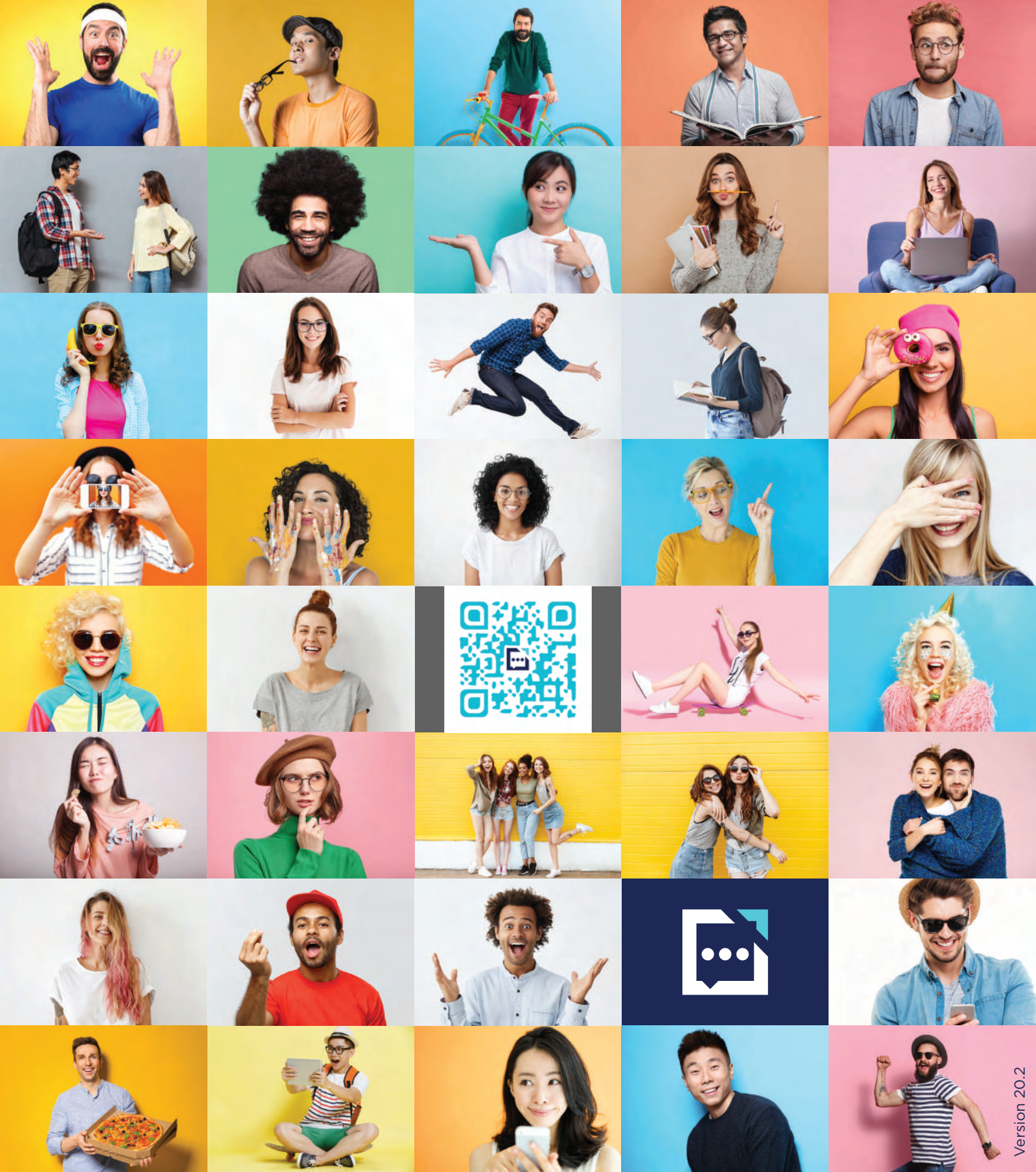




ECA

INTERNATIONAL AUTO SHOW
Toulouse, 1993

ROYAL



Brisbane Campus

Level 1, 126 Margaret St, Brisbane, QLD 4000
 Ph: + (61 7) 3210 7474 | info@elsis.edu.au

Melbourne Campus

Level 7, 399 Lonsdale St, Melbourne, VIC 3000
 Ph: + (61 3) 9603 5333 | info@elsis.edu.au

Sydney Campus

Level 2, 160 Sussex St, Sydney 2000
 Ph: + (61 2) 8265 3249 | contact@elsis.edu.au

Parramatta Campus

Level 4, 1-3 Fitzwilliam Street, Parramatta, NSW 2150
 Ph: 1800 595 333 | info@elsis.edu.au

