

Australian
National
University

Make your world – and ours

Welcome to ANU, from all corners of the earth.

Choosing to study an internationally recognised postgraduate degree at the Australian National University will help you drive your career further – or kick-start a new one – while propelling the world forward.

Our enriching courses are driven by the latest research and will see you diving deeply into your disciplines. By connecting you with opportunities to network and apply your learning in industry, research and community settings, we'll equip you to make a difference to your life and that of people in global communities around you.

Take your next step at ANU, in the heart of Australia's national capital, Canberra.

The Australian National University (ANU) acknowledges, celebrates and pays respect to the Ngambri and Ngunnawal people of the Canberra region and to all First Nations Australians on whose traditional lands we live, meet and work.

An inspiring community

17,000+ students from 100 countries

6 Nobel laureates

#1 in 13 academic disciplines in Australia¹

#1 most employable graduates in Australia²

#1 most international university³

5 stars for student-to-staff ratio and staff qualifications⁴

#30 in the world⁵

The Australian National University (ANU) is a member of Group of Eight Australia and the only Australian member of the International Alliance of Research Universities.

CRICOS Provider Number: 00120C
TEQSA Provider ID: PRV12002
(Australian University)

This student guide was published by the ANU International Strategy and Future Students Division in April 2024.

Information in it was current at the time of publication.

1. QS University Rankings by Subject 2024
2. Times Higher Education Global University Employability Rankings 2023–24
3. Times Higher Education Rankings 2023
4. 11:1, Good Universities Guide 2023
5. QS World University Rankings 2025

Contents

Why choose ANU	2
Canberra	4
The ANU learning experience	6
Grow your network	8
Support for your success	10
Campus and accommodation	12
ANU degrees	14
Student stories	19
Research opportunities	20
Financing your degree	24
How to apply	26

A message from the Vice-Chancellor

University is a place for learning, a place where teachers shape and reshape how you see the world, and a place where you will make incredible friends.

If you choose to study at ANU, you will join students from 100 different countries. You will study with academics who are leaders in their fields, and in classes small enough that the connections you make will be genuinely meaningful. You will have radical conversations and precious time to think about how you can help to make the world a better place. And you will do all of this on an astoundingly beautiful campus, surrounded by thousands of trees, so much colourful birdlife, and a community of faculty, staff and classmates who want you to succeed.

It is my hope that if you join ANU, it will become your home away from home—as it has been for so many people, including me. At the end of your degree, I know you will emerge as the best version of yourself: an extraordinary subject matter expert, an extraordinary citizen of the world, and an extraordinary human being.

I look forward to welcoming you.

Genevieve Bell

Vice-Chancellor and President



ANU Vice-Chancellor, Professor Genevieve Bell
AO FTSE FAHA

Five reasons why ANU is for you

1

We're Australia's most international university¹

In Canberra, 25% of people speak a language other than English,² many of them studying at ANU. With a student population representing Australia and countries around the world, we're rated the country's most international university for a reason.

2

Flexible, internationally recognised degrees

You can choose from 152 study options. ANU offers six-month short courses (graduate certificates), graduate diplomas and master's degrees, as well as unique research programs. You can also create a flexible double master's degree here. Our rewarding study experiences build the graduates with expertise and resilience that employers look for.

3

Small, interactive classes taught by world-leading academics

Connecting with talented lecturers, tutors and classmates – and amazing resources at ANU – is easy. Our student-teacher ratios are among the best in Australian universities and our research and learning facilities are second to none. As a trusted intellectual powerhouse, we offer opportunities unique to a national capital, including access to government decision makers and industry internships.

4

Everything in one place

Our campus has everything you need to fit further study into your life – from childcare, supermarkets, textbooks and stationery to 24-hour libraries, a gym, doctor's surgery and great coffee. We also host events and social clubs to help you build networks and feel at home in our community. Need anything else? Canberra's CBD is just a few minutes' walk or bike ride away.

5

Welcoming and supportive community

With students from all over the globe, Canberra offers an unforgettable experience. We guarantee a room in a student residence and connect you with a supportive campus community. Discover the city, make lifelong friends and embrace the next chapter of your life.



Welcome to your next adventure

Australia offers incredible natural landscapes and city experiences – and the national capital is no exception. With a median age of 35, young and welcoming Canberra has kangaroos and koalas, rivers and mountains for you to explore, as well as great food, culture and a chilled city vibe. Say “g’day” to this cool capital.

Culture

On weekends, discover Braddon’s local coffee roasters and eclectic cafes, just a few minutes’ walk from ANU, before heading to the Haig Park markets for some locally made clothes, jewellery and produce. You can also take in a show at the theatre, an exhibition at the National Gallery or National Museum, and discover the workings of Australia’s government at Parliament House.

Adventure

All year, you can walk or ride a bike along the weaving trails dotted around local nature reserves. In summer, take some time away from your studies at the National Zoo and Aquarium or swim in the Murrumbidgee River. In winter, hire some ski gear and flock with your friends to the Snowy Mountains.

Festivals and nightlife

Canberra’s awesome festivals span four distinct seasons. In spring, wander through flower-filled Floriade and in summer, watch a Canberra Comedy Festival gig. In autumn, the illuminating Enlighten Festival will brighten your eyes and the Truffle Festival, held in winter, will tantalise your taste buds. As the sun descends on another beautiful blue-sky day, head into the city to a live music venue, nightclub or over to the National Botanic Gardens, where you can watch a movie under the stars.

Food, drink and shopping

Canberra has rooftop bars serving tapas, local breweries specialising in beer and hamburgers, and bistros offering award-winning dishes and glimpses of the past.

When it comes to shopping, the city has a smorgasbord of small and large retailers, including boutique and vintage shops, several fresh produce markets and big retail centres.

Work

With your Australian student visa, you can work part-time for up to 48 hours every two weeks during semester and unrestricted hours during study breaks.

A highly educated city, Canberra provides many employment opportunities for you to choose from.

Accommodation guarantee

ANU guarantees you a room in student accommodation.

Learn more about our accommodation guarantee on page 12.

A capital city to love

#1 highest average income and lowest unemployment in Australia

Why Study in Canberra 2023

#1 most sustainable city in Australia

Earth Org 2022

#3 smartest city in the world

IMD Smart City Index 2023

25% of people speak a language other than English

Multicultural Canberra 2023

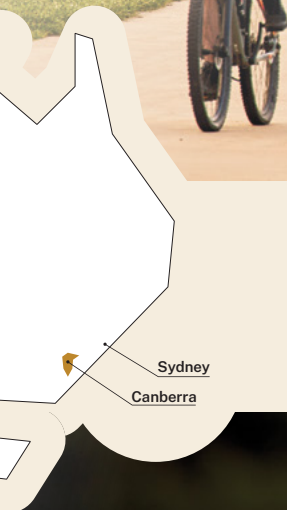


“My learning experience throughout my bachelor and current postgraduate degree in medicine has been amazing. ANU offers a large range of courses that allow me to explore different areas of science and discover my passion for medicine. I’m thankful that I’m being taught by passionate and caring lecturers and clinicians who instil knowledge, confidence and empathy in me.”

Katherine Nguyen – Vietnam
Doctor of Medicine and Surgery

Experience the knowledge capital

More than half of Canberra's population holds a degree; Canberra is a place of decision-makers and deep thinkers. Surround yourself with artists, researchers, scientists, diplomats, academics, policymakers and cutting-edge entrepreneurs. They all call Australia's capital home.



Realise your potential

Interactive tutorials, practical internship courses and skill-building workshops are just a few of the ingredients that drive the learning experience at ANU. Studying in person on our campus is another – and will see you getting better results than studying online.

Learn from leaders in their field

Experience creative and meaningful approaches to teaching and problem solving. At ANU, classes are small, so you'll learn in innovative ways. Imagine embarking on a metaphorical voyage in a canoe to get a sense of the Pacific's diverse social and cultural dimensions or working in a 'flipped classroom' and having flexible interactive one-on-one meetings with your teachers.

Study in innovative learning spaces

At ANU, you can work in a recording or glass studio or with tools like 3D printers in MakerSpace. Depending on the courses you take or research you do, you can also explore nuclear physics in our heavy ion accelerator facility, argue in a contemporary moot courtroom, witness the SkyMapper telescope's creation of the first comprehensive digital survey of the entire southern sky, or code Gadi, the southern hemisphere's fastest supercomputer. All ANU courses are taught in innovative facilities that encourage exploration and collaboration.

Take an internship course

During your degree, you may be able to enrol in internship courses and gain a range of experience in business, government, the cultural sector and community settings. Our internships explore subjects as diverse as art collection management, archaeology, engineering, computing, public health, policy and diplomacy, as well as business, economics, law, science and strategy.

Participate in research-led learning

ANU courses expose you to the research your teachers are conducting and provide experiential opportunities to engage with it. This research-led approach to learning triggers debate while developing critical thinking skills.

Build your research skills

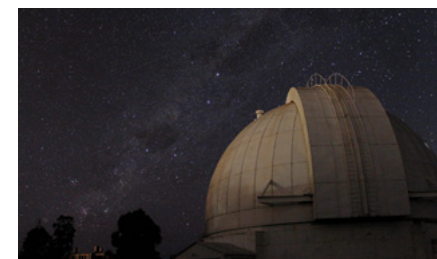
We offer workshops, events and short courses that develop your skills so you can get the most out of the research you do as part of your degree.

Conduct research on our other campuses

Your studies will mostly take place on our Acton campus, but a research project, hands-on field trip, specialist course or other opportunity could take you to other ANU campuses in the Australian Capital Territory, New South Wales and the Northern Territory.



Kioloa Coastal Campus



Mount Stromlo Observatory



“ANU has a very student-first approach to learning and teaching. I have been constantly encouraged to push my limits, explore knowledge and think outside the box.

Assignments are designed to help build soft skills like accountability, collaboration and cooperation. The professors are a true inspiration. They allow students to choose their path to reach the final goal within prescribed limits. They challenge us to explore and use our intellect and imagination. This is a place where you will also grow personally from your experience; it is a roller coaster journey, where I succeed and lose, but in the end I always learn. At every step I’ve been pushed at ANU to think beyond the limits, face challenges and become a better version of myself.”

Gurisha Gupta – India

Master of Finance

Grow your network

Networking at ANU develops professional contacts, creates relationships and connects you with information and knowledge. It can also build your reputation.

Talk with employers

Each year, we invite students to the Career Connect fair, usually held in Semester 2. It brings industries and companies together on campus so you can talk to them about work opportunities and build your professional networks.

Intern in public policy environments

Unique to ANU are a range of special internship programs that could see you working during semester breaks alongside politicians and their aides in the ACT Legislative Assembly, Parliament House or overseas in the United States Congress. We also offer internship courses in non-policy disciplines.

Mingle with other researchers

Research support is about connection and collaboration. In fact, we have the Research and Innovation Services office which provides our higher degrees by research (HDR) communities with training, fellowships and support, and the Graduate Research Office which works with researchers directly. Training and activities where you can mingle with other researchers include boot camps, candidate inductions, ethics and integrity workshops, as well as entrepreneurship opportunities and local innovation networks.

Attend ANU events

ANU events are great opportunities to meet other like-minded people and talk to academics and special guests. Online and in person, you can attend tours of campus, author and artist talks, lectures, music performances and listen to conversations between experts about aspects of their research.

Connect with alumni around the world

Among ANU alumni are former Australian prime minister Dr Kevin Rudd AC, Governor-General of Australia Sam Mostyn AO (from 1 July 2024) and Indonesia's former foreign minister Dr Raden Mohammad Marty Muliana Natalegawa – as well as many musicians, comedians, CEOs, artists, authors and scientists. Meet them at our events. And, when you graduate, enjoy all the benefits of being part of our engaging international alumni community.

Join a club or society

Whether you're interested in the arts, languages, advocacy, physics or sport, there's a student-run social, academic or cultural club or society that will connect you with other like-minded people.

Explore ANU clubs at anusa.com.au/life/clublist/

Explore events

Our events share and celebrate research, education, policy engagement and community.



Search
what's on



“The systems engineering curriculum at ANU is giving me the skills to contribute to cross-disciplinary problems. It’s shown me how to communicate engineering work and solutions with both specialists and the general public. I have been equipped with insights to complex practical and theoretical problems in the energy industry. I can also evaluate complex systems in terms of technical and social perspectives. ANU offers me a wide range of study resources and extraordinary teaching experiences. I work with highly distinguished scholars in the field and excellent students from all around the world.”

Tuan Tran – Vietnam

Master of Engineering (Renewable Energy)



“I am from the fourth smallest country in the world. This opportunity to study and learn from the best academics, diplomats and policy practitioners will have a lifelong impact on my character, the work I will contribute when I return home, and the learning process that I will continue as an ANU alumna.”

Moira Simmons – Tuvalu

Master of National Security Policy

Support for your success

Fitting further study around your other commitments requires support. Whether it's childcare or accommodation you need to meet your goals, or career guidance and enrolment help, it's all here.

Student advisers

Settling into university life is easy at ANU. Student advisers can help you with orientation tasks, enrolling in your classes and anything else you may need to do before semester begins.

English language groups

Our fun and relaxed English conversation groups are a great way to meet new people and practice your language skills with native speakers.

Childcare

We have five childcare centres to support you and your family. They cater for all ages up to pre-school level. Some are not-for-profit centres, while others are privately owned and run.

Enrolment assistance

ANU Student Central is your first port of call for anything related to the administration of your degree – from advice about enrolling in your courses and managing your timetable to paying your fees and preparing to graduate. Your ANU college can also provide you with similar support.

Academic skills

We supply workshops and one-on-one sessions on academic writing, research techniques, communication strategies, referencing, academic integrity and how to prepare for exams. Just say what you need, and we'll provide it.

Career planning

The ANU Careers team can give you one-on-one practical career advice and point you to resources that can help you increase your impact at interview.

Wellbeing services

Whenever you need confidential medical care or counselling, you'll find it right here on campus. You can either make an appointment or walk in to see a doctor or nurse.

Spiritual guidance

When you need spiritual support, our multifaith chaplains can help. They represent the Anglican, Catholic and Baptist churches and the Muslim, Hindu, Jewish and Baha'i faiths, as well as the humanist tradition.

Mentoring

SET4ANU is a free mentoring program designed to help you transition to life at ANU. Signing up will match you with a later-year student volunteer who can help you through your first few weeks on campus.

24/7 crisis service

You can phone this crisis service if you need relief from emotional distress, help managing immediate threats to your safety or when you want to learn about pathways to longer-term support services.

Graduate research services

Our Graduate Research Office supports higher degree by research (HDR) candidates. It can help you with enrolment, leave and extensions, thesis submissions, examinations and restrictions. The office also coordinates scholarships.

Email: gro@anu.edu.au
Phone: +61 2 6125 5777

Students with disability

If you are a carer, have a medical condition or are living with a disability, we'll provide you with advice about support and adjustments that will help you take part fully in your degree program.

Email: access.inclusion@anu.edu.au
Phone: +61 2 6125 5036

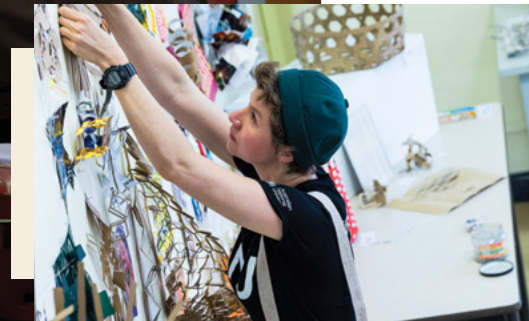


“I am a lawyer, researcher and aspiring legal scholar. Ever since my undergraduate law studies in Nigeria and qualification as a barrister and solicitor, I’ve been eager to continue

broadening my academic and professional horizons. So, I set my sights on international study at ANU with the help of an education agent and the ANU Chancellor’s International Scholarship. My courses give me insight to matters related to one of my main passions: international economic law – and ANU College of Law events draw on the expertise of its academics, as well as partners in the legal profession, politics and other sectors.”

Anu Adeyemi – Nigeria

Master of International Law and Diplomacy



A campus experience that's all about you

Our beautiful and safe campus is a welcoming hub of study and social activity. It offers everything you need to complete your assignments, meet new people and move easily between classes, part-time work and home.

A room of your own

Living in a secure, self-catered student residence on our campus puts your classes, libraries and all the amenities of the Kambri student hub in easy reach, while providing you with a supportive community, student events and residential advisers.

ANU guarantees you a room in a student residence. You can choose to live with other postgraduate scholars or in a mixed residential community of undergraduate and postgraduate students.

As a guide, rates for postgraduate accommodation in 2024 ranged between AUD \$282 and \$571 per week.

Choose your room

We offer a wide range of rooms and studios, both on and off campus.



Explore ANU residences

Apply for student accommodation

Apply for a room before you receive a study offer. We'll try to place you within the residence of your choice.



Request a room

City on your doorstep

The main ANU campus at Acton is just a short walk or bike ride away from Canberra's CBD. This proximity makes it easy to travel between classes and all the things you may need in the city, including banks, hairdressers, grocers and public transport.

You'll find some excellent restaurants, bars, theatres and music venues in the CBD as well.

24/7 library access and study spaces

Our five libraries are open seven days a week – and four of them 24 hours a day. They provide access to PC and Mac computers, printers, copiers and study spaces, as well as regular workshops on how best to utilise their vast resources.

Our campus has plenty of other study spaces to choose from too. For starters, there's the six floors of the striking Marie Reay Teaching Centre that include flexible spaces with tables and chairs, kitchen facilities, cutting-edge technology and panoramic views of the city.

Meet, shop and eat

Conveniently on the ANU campus are cafes, a pharmacy, supermarket, and a bookshop. They provide everything from basic groceries and snacks, to prescription medicines, stationery and textbooks. Catch up with classmates over a coffee or grab a bag of groceries on-the-go.

Stay fit and healthy

Maintain your physical and mental fitness at our swimming pool, two gyms and four ovals. You can book our indoor courts and fitness spaces at great student rates. Like Canberra, the University is bike and e-scooter friendly.

Getting here

You can travel to and from campus on Canberra's efficient light rail and bus networks. The city's roads have a network of bike paths that connect the CBD and suburbs. Affordable car parking is also available on campus.



24/7 security

The ANU Security team and the free ANUOK app work together to make sure our campus is a safe environment for you. Reach them quickly by downloading the ANUOK app when you arrive.



Download
the ANUOK app



“As part of the Australian Awards Scholarship network, I have had an experience of ANU that has gone beyond the classroom. Recently, I travelled to Newcastle in New South Wales to network with professors and learn about how Australia is tackling the UN Sustainable Goals. It's been eye-opening and inspiring to be part of such initiatives.”

Binh Thanh Ho – Vietnam

Master of Public Policy



“I feel lucky to have been given real industry experience in an IT company and to be able to work as a tutor for a computer science course while studying at ANU. One of the best resources here is the members of the community. Interact with lecturers, tutors, peers and staff members as you will have something new to learn. Sometimes, conversations can lead to more opportunities.”

Ting Wang – China

Master of Digital Humanities and Public Culture

Find your next challenge

From the arts, politics, languages and international studies to the sciences, cybernetics, health, law and Asia-Pacific studies, there's a coursework or research degree for you at ANU. Each has the exceptional knowledge and learning experiences you need to get ahead.

Postgraduate study pathway

- Graduate certificate (24 units)
Six months' full-time study
- Graduate diploma (48 units)
One year full-time study
- Master degree (48 units)
One year full-time study
- Master degree (96 units)
Two years' full-time study
- Master degree (advanced) (96 units)
Two years' full-time study, including a 24-unit supervised sub-thesis
- Higher degrees by research (HDR)

Subject areas

- Arts, society and culture
- Asia-Pacific, international relations and security studies
- Business and commerce
- Engineering and computing
- Health, medicine and psychology
- Law and legal studies
- Natural, physical and environmental sciences

Coursework degrees

We offer graduate certificates, graduate diplomas and master's degrees. Some of these qualifications have a research part that involves working with an academic supervisor. ANU also provides the following coursework programs.

Flexible Double Masters degrees

The ANU College of Arts and Social Sciences and the ANU College of Asia & the Pacific offer unique Flexible Double Masters programs. Build yours by combining two master's programs such as these ones.

- Master of Anthropology and Planetary Futures
- Master of Art History and Curatorial Studies
- Master of Contemporary Art Practices
- Master of Diplomacy

- Master of History
- Master of Management
- Master of Pacific Development
- Master of Social Research Methods

Short courses

Also known as graduate certificates, these are great places to start postgraduate study if you're not ready to commit to a bigger program just yet. To find the one for you, search 'graduate certificates' on our programs and courses web page.

For a full list of postgraduate coursework degrees, go to page 16.

Research degrees

ANU offers the following higher degrees by research (HDR) programs. You can apply for them throughout the year.

- Master of Philosophy (MPhil)
- Doctor of Philosophy (PhD)

Explore ANU research areas on page 20 and discover how to apply for them on pages 26–29.

Find your degree

Browse our coursework and research degrees and discover GPA, prerequisite subject and any other admissions requirements that you'll need to meet before you apply.



Search programs
and courses

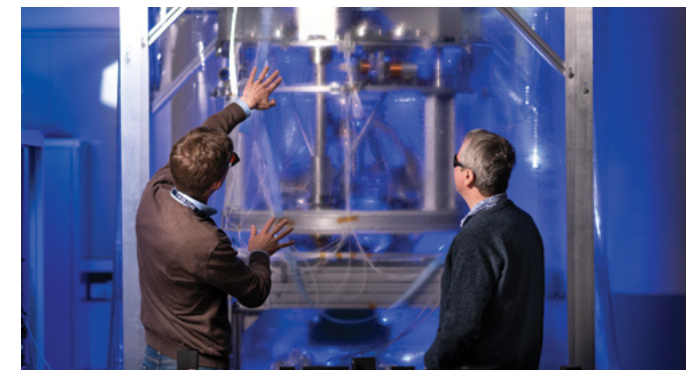


"I already had a clear idea of what I wanted to do and I moved all the way to Australia because ANU had exactly what I needed in terms of research. I'm getting a quality education

here. The relationship that a student has with a supervisor or a professor – it's very casual. And that's one thing I really like; I don't have to hesitate before troubling them with questions because they are just there to help. That gives me permission to explore and satisfy my curiosity and was a good surprise. I won't say it has been a very easy journey because, considering the level of the University, it has been a draining one – but in a good way. You just need to buckle up and when the semester begins, or your research begins, you need to power through that."

Priya Rao – Zambia

Master of Science (Advanced)
in Quantitative Biology and Bioinformatics



YOUR STUDY OPTIONS

152 postgraduate programs

Our extensive postgraduate study options include graduate certificates, graduate diplomas and master's degrees, as well as higher degrees by research.

Program name ¹	Duration (years)	Semester intake	Indicative annual fee for international students (AUD) ²	CRICOS code
ANU College of Arts & Social Sciences				
Flexible Double Masters	2	1 & 2	50,500	112694M
Graduate Certificate of Demography	0.5	1	25,250	108301A
Graduate Certificate of Middle Eastern and Central Asian Studies	0.5	1 & 2	25,250	107758J
Graduate Certificate of Studies	0.5	1 & 2	25,250	082261M
Master of Anthropology and Planetary Futures	1	1 & 2	50,500	114811F
Master of Anthropology and Planetary Futures (Advanced)	1.5	1 & 2	50,500	114812E
Master of Archaeological and Evolutionary Science	2	1 & 2	50,500	096399M
Master of Archaeological and Evolutionary Science (Advanced)	2	1 & 2	50,500	096400A
Master of Art History and Curatorial Studies	1	1 & 2	47,380	108306G
Master of Art History and Curatorial Studies (Advanced)	1.5	1 & 2	50,500	108307F
Master of Contemporary Art Practices	1	1	47,380	108308E
Master of Contemporary Art Practices (Advanced)	1.5	1	47,380	108309D
Master of Digital Humanities and Public Culture	1	1 & 2	50,500	108314G
Master of Digital Humanities and Public Culture (Advanced)	1.5	1 & 2	50,500	108315F
Master of General and Applied Linguistics	1.5	1 & 2	50,500	108329M
Master of General and Applied Linguistics (Advanced)	2	1 & 2	50,500	082302G
Master of Heritage Tourism Management	1.5	1 & 2	48,035	114601E
Master of History	1	1 & 2	50,500	108325D
Master of History (Advanced)	1.5	1 & 2	50,500	108326C

Program name ¹	Duration (years)	Semester intake	Indicative annual fee for international students (AUD) ²	CRICOS code
Master of Middle Eastern and Central Asian Studies	1.5	1 & 2	50,500	108330G
Master of Middle Eastern and Central Asian Studies (Advanced)	2	1 & 2	50,500	082339E
Master of Museum and Heritage Studies	1.5	1 & 2	50,500	108331F
Master of Museum and Heritage Studies (Advanced)	2	1 & 2	50,500	085332K
Master of Political Science	1.5	1 & 2	53,370	102925F
Master of Political Science (Advanced)	2	1 & 2	53,370	096438J
Master of Social Research Methods	1	1 & 2	50,500	108327B
Master of Social Research Methods (Advanced)	1.5	1 & 2	50,500	108328A
ANU College of Asia & the Pacific				
Executive Master of Public Policy	1	Summer & Winter sessions	53,370	095622F
Graduate Certificate of Asia-Pacific Economies	0.5	1 & 2	26,685	114600F
Graduate Certificate of Climate Policy	0.5	Summer & Winter sessions	26,685	103367A
Graduate Certificate of Crime, Risk and Resilience (online from overseas)*	0.5	Summer & Winter sessions	25,250	
Graduate Certificate of Engaging Asia	0.5	1 & 2	25,250	103364D
Graduate Certificate of Engaging the Pacific	0.5	1 & 2	25,250	103365C
Graduate Certificate of Environmental and Resource Economics	0.5	Summer & Winter sessions	26,685	103865E
Graduate Certificate of Environmental Management	0.5	Summer & Winter sessions	26,685	107175K
Graduate Certificate of International and Development Economics	0.5	Summer & Winter sessions	26,685	103866D
Graduate Certificate of National Security Policy	0.5	Summer & Winter sessions	26,685	103864F
Graduate Certificate of Pacific Development	0.5	1 & 2	25,250	103366B
Graduate Certificate of Policy Design and Analysis	0.5	Summer & Winter sessions	26,685	103871G
Graduate Certificate of Political Science	0.5	1 & 2	26,685	103870H
Graduate Certificate of Public Management	0.5	Summer & Winter sessions	26,685	103863G
Graduate Certificate of Public Policy	0.5	Summer & Winter sessions	26,685	089715G

Program name ¹	Duration (years)	Semester intake	Indicative annual fee for international students (AUD) ²	CRICOS code
Graduate Certificate of Regulation and Governance (online from overseas)*	0.5	Summer & Winter sessions	26,685	
Graduate Certificate of Strategic Studies	0.5	1 & 2	26,685	103868B
Graduate Certificate of Technology Governance (online from overseas)*	0.5	Summer & Winter sessions	25,250	
Graduate Diploma of International Affairs	1	1 & 2	53,370	088970M
Master of Asian and Pacific Studies	2	1 & 2	50,500	093286M
Master of Climate Change	1.5	Summer & Winter sessions	53,370	102926E
Master of Diplomacy	1	1 & 2	53,370	111566E
Master of Engaging Asia	1.5	1 & 2	53,370	103371E
Master of Environmental and Resource Economics	2	Summer & Winter sessions	53,370	082295A
Master of Environmental Management and Development	2	Summer & Winter sessions	53,370	082296M
Master of Global Securities and Strategy (online from overseas)*	1	Summer & Winter sessions	53,370	
Master of International and Development Economics	2	Summer & Winter sessions	53,370	082308A
Master of International Relations	2	1 & 2	53,370	082309M
Master of National Security Policy	1.5	Summer & Winter sessions	53,370	0101473
Master of Pacific Development	1	1 & 2	53,370	103372D
Master of Peace and Conflict Studies	1	1 & 2	53,370	114599E
Master of Peace and Conflict Studies (Advanced)	1.5	1 & 2	53,370	114598F
Master of Public Administration	1.5	Summer & Winter sessions	53,370	102923H
Master of Public Policy	2	Summer & Winter sessions	53,370	082349C
Master of Regulation and Governance	1.5	Summer session	53,370	103373C
Master of Regulation and Governance (online from overseas)*	1.5	Summer & Winter sessions	53,370	
Master of Strategic Studies	1.5	1 & 2	53,370	102924G
Master of Strategic Studies (Advanced)	2	1 & 2	53,370	082355E
Master of Technology Governance	1.5	Summer & Winter sessions	50,500	111567D
ANU College of Businesses & Economics				
Graduate Certificate of Accounting	0.5	1 & 2	26,685	052700G
Graduate Certificate of Economics	0.5	1 & 2	26,685	082256G
Graduate Certificate of Finance and Actuarial Statistics	0.5	1 & 2	26,685	082257G
Graduate Certificate of Management	0.5	1 & 2	26,685	030000G

Program name ¹	Duration (years)	Semester intake	Indicative annual fee for international students (AUD) ²	CRICOS code
Graduate Diploma of Economics	1	1 & 2	53,370	082263J
Master of Accounting	2	1 & 2	53,370	050800J
Master of Actuarial Practice	2.5	1 & 2	53,370	079658E
Master of Actuarial Studies	2	1	53,370	050802G
Master of Applied Accounting	1	1 & 2	53,370	103370F
Master of Applied Accounting and Master of Financial Management	2	1 & 2	53,370	111569B
Master of Applied Economics	2	1 & 2	53,370	082269C
Master of Applied Finance	1.5	1 & 2	53,370	079659D
Master of Business Information Systems	2	1 & 2	53,370	050796M
Master of Commerce (Advanced)	2	1 & 2	53,370	093294M
Master of Economic Policy	2	1 & 2	53,370	082289K
Master of Economics	2	1 & 2	53,370	082290F
Master of Entrepreneurship and Innovation	2	1 & 2	53,370	091185K
Master of Finance	2	1 & 2	53,370	039762C
Master of Financial Economics	2	1	53,370	086226D
Master of Financial Management	1	1 & 2	53,370	029316G
Master of Financial Management and Law	2	1 & 2	53,370	103872F
Master of International Management	2	1 & 2	53,370	088059J
Master of Management	1	1 & 2	53,370	107176J
Master of Management (Advanced)	2	1 & 2	53,370	107177H
Master of Marketing Management	2	1 & 2	53,370	091184M
Master of Professional Accounting	1.5	1 & 2	53,370	050799G
Master of Project Management	2	1 & 2	53,370	082344G
Master of Statistical Data Analysis	1	1 & 2	53,370	111568C
Master of Statistics	2	1 & 2	53,370	082353G
ANU College of Engineering, Computing & Cybernetics				
Graduate Diploma of Applied Data Analytics	1	1 & 2	53,370	097201M
Master of Applied Cybernetics	1	1	53,370	103368M
Master of Applied Cybernetics (Advanced)	1.5	1	53,370	103369K
Master of Applied Data Analytics	1.5	1 & 2	53,370	097058B
Master of Computing	2	1 & 2	53,370	078940M
Master of Computing (Advanced)	2	1 & 2	53,370	085934F
Master of Engineering in Electrical Engineering	2	1 & 2	53,370	077326G
Master of Engineering in Energy Systems	2	1 & 2	53,370	114602D
Master of Engineering in Robotics, Automation and Control	2	1 & 2	53,370	114603C
Master of Machine Learning and Computer Vision	2	1 & 2	53,370	099247C

YOUR STUDY OPTIONS

Program name ¹	Duration (years)	Semester intake	Indicative annual fee for international students (AUD) ²	CRICOS code
ANU College of Health & Medicine				
Doctor of Medicine and Surgery	4	1	92,650	077442D
Master of Clinical Psychology	2	1	56,370	003116G
Master of Culture, Health and Medicine (Advanced)	2	1 & 2	50,500	082284D
Master of Culture, Health and Medicine	2	1 & 2	50,500	088510F
Master of Neuroscience	2	1 & 2	56,370	082376M
Master of Neuroscience (Advanced)	2	1 & 2	56,370	082342K
Master of Professional Psychology	2	1	56,370	096441C
Master of Public Health	2	1 & 2	50,500	082346F
Master of Public Health (Advanced)	2	1 & 2	50,500	082347E
ANU College of Law				
Graduate Certificate of Law	0.5	Summer & Winter sessions	26,685	082258F
Juris Doctor	3	1 & 2	58,050	061559M
Master of International Law and Diplomacy	2	Summer & Winter sessions	53,370	0101475
Master of Laws	1	Summer & Winter sessions	53,370	006504E
ANU College of Science				
Graduate Certificate of Disaster Risk Science and Sustainability	0.5	1	26,685	099463F
Graduate Certificate of Science Communication	0.5	1 & 2	26,685	103862H
Graduate Diploma of Science	1	1 & 2	53,370	003114K
Master of Biotechnology	2	1 & 2	53,370	082279A
Master of Biotechnology (Advanced)	2	1 & 2	53,370	082280G
Master of Earth Sciences (Advanced)	2	1 & 2	53,370	082288M
Master of Energy Change	2	1 & 2	53,370	082291E
Master of Energy Change (Advanced)	2	1 & 2	53,370	082292D
Master of Environment	2	1 & 2	53,370	082293C
Master of Environment (Advanced)	2	1 & 2	53,370	082294B
Master of Forests	2	1 & 2	53,370	111570J
Master of Forests (Advanced)	2	1 & 2	53,370	111571H
Master of Mathematical Sciences (Advanced)	2	1 & 2	53,370	082337G
Master of Science (Advanced) in Agricultural Innovation	2	1 & 2	53,370	0101484
Master of Science (Advanced) in Astronomy and Astrophysics	2	1 & 2	53,370	0101477

Program name ¹	Duration (years)	Semester intake	Indicative annual fee for international students (AUD) ²	CRICOS code
Master of Science (Advanced) in Biological Sciences	2	1 & 2	53,370	096440D
Master of Science (Advanced) in Materials Science	2	1 & 2	53,370	102931H
Master of Science (Advanced) in Nuclear Science	2	1 & 2	53,370	099251G
Master of Science (Advanced) in Precision Instrumentation and Measurement	2	1 & 2	53,370	099249A
Master of Science (Advanced) in Quantitative Biology and Bioinformatics	2	1 & 2	53,370	096440D
Master of Science (Advanced) in Quantum Technology	2	1 & 2	53,370	099253E
Master of Science (Advanced) in Theoretical Physics	2	1 & 2	53,370	0101482
Master of Science Communication	2	1 & 2	53,370	082350K
Master of Science in Agricultural Innovation	2	1 & 2	53,370	0101483
Master of Science in Astronomy & Astrophysics	2	1 & 2	53,370	0101476
Master of Science in Biological Sciences	2	1 & 2	53,370	096439G
Master of Science in Earth Sciences	2	1 & 2	53,370	0101480
Master of Science in Materials Science	2	1 & 2	53,370	102930J
Master of Science in Mathematical Sciences	2	1 & 2	53,370	102929B
Master of Science in Nuclear Science	2	1 & 2	53,370	099254D
Master of Science in Precision Instrumentation and Measurement	2	1 & 2	53,370	099248B
Master of Science in Quantitative Biology and Bioinformatics	2	1 & 2	53,370	096439G
Master of Science in Quantum Technology	2	1 & 2	53,370	099252F
Master of Science in Theoretical Physics	2	1 & 2	53,370	0101481



To be considered for admission to a program at ANU, you must meet the minimum admission requirements. Scan the QR code to learn more about program-specific admission requirements.

1. The University reserves the right to alter or discontinue its programs as required. Please note that not all degrees are available to commence in semester 2.

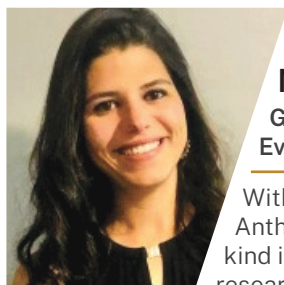
2. Indicative annual fees for international students are subject to change. These fees are intended to serve as a general guide and should not be considered a guarantee of the actual fees that will be charged. Tuition fees for individual courses are available in the relevant programs & courses course entry. For further information on international tuition fees, please visit programsandcourses.anu.edu.au

* These programs are not CRICOS registered. International students cannot study these programs in Australia on an Australian student visa.

Any exceptions are at the discretion of the academic area.

In their words

Learn from ANU students and alumni about their learning experiences, why they chose to study with us and the ways they hope to influence change.



Nathalia Dias – Brazil

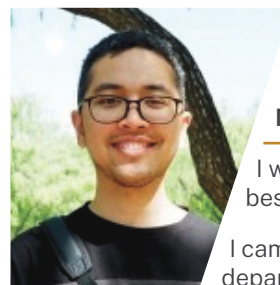
Graduate, Master of Archaeological and Evolutionary Science (Advanced)

With access to the ANU School of Archaeology and Anthropology laboratory in paleo history – the only one of its kind in the Southern Hemisphere – I was able to continue the research I began in Brazil. I was lucky enough to find senior lecturer, Dr Justyna Miszkiewicz, to help me.

I learned a lot about scientific methods at ANU, about the different possibilities in archaeology – things I didn't know before – while focusing on what I needed and wanted to do for my career. Each of my courses was theoretical and practical and I was able to practice analysis in them, which I also had not been able to do back in Brazil.

I studied courses on social anthropology and the applications of social anthropology to archaeology, and learned more about carbon dating. I also studied health and disease. The Master of Archaeological and Evolutionary Science (Advanced) is the only course in the world, I think, with that combination.

Moving from Brazil to Canberra to study at ANU was one of the best decisions I've made. After I graduated, I landed a job with Terra Rosa Consulting in Perth. The combination of archaeology and biological anthropology I had studied at ANU was very important for the project I worked on.



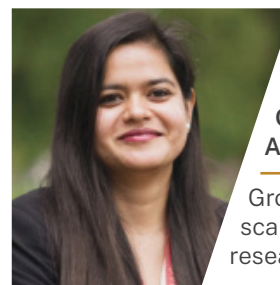
Ounu Zakiy Sukaton – Indonesia

Master of General and Applied Linguistics

I was interested in forensic linguistics and ANU offers the best forensic linguistics learning in Australia.

I came to ANU because I was really interested in the linguistics department. Their academic staff, such as Dr Susy Macqueen and Dr Yuko Kinoshita, are very well known. I came with high expectations, but they were exceeded by the reality on the ground.

It was hard, but the standards were very good. I enjoyed working with professionals, people who are good in their field. We did hands-on exercises on how to use specific tools, computer tools and real analysis on specific cases. You get to practice what you learn in class, not just talk about it in theory.



Astha Sharma – India

Graduate, Doctor of Philosophy, ANU School of Engineering

Growing up, we used to have severe heat waves and water scarcity due to drought. I went into renewable energy research to work towards solving the problem.

From the start, I was intrigued by the idea of working on solar cells. The solar photovoltaic group at ANU is one of the best in the world, and it was the cutting-edge research they were doing that prompted me to apply here.

During my bachelor's and master's degrees I had devoured the research papers of recognised world leaders in solar cells at ANU, Dr Fiona Beck and Dr Kylie Catchpole. They became supervisors for my PhD research, along with Dr Siva Karuturi and Dr Heping Shen.

When the solar hydrogen process that we designed met the US DOE standard, we set a world record for solar-to-hydrogen efficiency and provided a pathway towards large-scale renewable hydrogen.

Inspiring research to explore

Research is at the core of everything we do. It informs the content of our degrees, influences public policy and solves some of our region's greatest challenges.

Culture, creativity and society

Indigenous studies

We're addressing key issues for Indigenous populations and increasing our understanding of their cultures, laws and histories with cross-disciplinary research in a number of fields.

Social structures & processes

Our network of archaeology, anthropology and history scholars are working in remote and metropolitan Australia and Asia and the Pacific to understand societies from ancient times to the present day.

The arts

Our interdisciplinary cultural inquiry, creative arts, museum and art curatorship research engages with the social issues facing Australia, including Indigenous cultural expression.

Environment and sustainability

Climate change

Our interdisciplinary research is contributing to climate change mitigation and developing adaptation solutions. With our connections to government, the private sector and society, it's also informing policy advice.

Biodiversity

With deep connections to CSIRO and global partners, ANU is pushing biodiversity science forward using innovative capabilities in genomics, bioinformatics, ecological modelling and biodiversity policy.

Energy alternatives

We're exploring new technologies for nuclear, fusion, solar, energy storage, enhanced oil and gas, biofuels and photosynthesis, and smart grid technology.

Future security

Strategy & defence

We're Australia's home of strategic studies research, education and commentary. Our focus is on understanding the complexity of Asia's strategic environment, Australia's place in it, and the utility and application of armed forces in international affairs.

Food security

We're tackling the problems of food security in an interdisciplinary way with global partners. Our research explores crop productivity and disease, water and land management rights and development, as well as economics and policy to improve outcomes for vulnerable populations.

Resilience & adaptation

We are looking at the effects of development, climate change and policy decisions on Australian and Asia-Pacific region populations, including First Nations peoples.

Health and medicine

Mental health & cognition

Our interdisciplinary behavioural research has applications in e-health, ageing and wellbeing, chronic disease management and perceptual psychology.

Health policy

We're breaking down some of the barriers to health care, including access, costs and insufficient resources, with research that spans epidemiology, economics, regulation and informatics.

Combating diseases & conditions

By tackling complex diseases with our hospital and health provider partners, we're translating findings into policies that improve health outcomes for all people.



“During my degree, there have been a lot of challenges. The most exciting challenge was when my supervisors Professor Andy Hogg and

Dr Wilma Huneke of the

ANU Research School of Earth Sciences and I decided to run a new simulation in the two weeks before my thesis submission. I had to write more codes, plot more figures and put these results into my thesis before submitting it. The pressure was on, but Andy and Wilma encouraged me a lot and I just focused on doing the best I could for everything, rather than worrying about the result I would get. In the end, I submitted a good piece of work on time. I will continue the work I started in my master’s program by exploring physical oceanography and ocean modeling around Antarctica. I am currently trying to find a PhD program and am considering multiple universities, including ANU.”

Hangyu Meng – China

Graduate, Master of Earth Sciences (Advanced)

YOUR RESEARCH OPTIONS

Regional and global context

Asia & Pacific countries

ANU hosts the English-speaking world's largest assembly of scholars dedicated to working on Asia and the Pacific countries' cultures and languages.

Regulation, justice & law

We're exploring legal systems and governance; Australian, international and public law; social justice; human rights and criminology.

Economic growth & wellbeing

Our policy relationships and strengths in macroeconomics, global finance and corporate strategy, among other disciplines, make ANU a powerhouse of business research in Australia.

Science

Space sciences

Exploration of cosmology, galaxies, stars and exoplanets at ANU is seeing us partner with global initiatives, such as the Giant Magellan Telescope, two optical observatories, and internationally respected luminaries like Nobel laureate Professor Brian Schmidt AC FAA FRS.

New materials & processes

ANU conducts extensive research into materials science and manufacturing, chemical synthesis, nanoscience and nanotechnology and their application in many industries, including biomedical, space, manufacturing and energy.

Information age

Through mathematics, computer science, business information systems, and engineering, we're working to improve the capabilities of technology, and its ability to perform tasks more efficiently and accurately, while managing digital change.

Read our research news

Discover the latest developments in our research expertise, study programs, industry partnerships, multi-college collaborations and cutting-edge facilities.

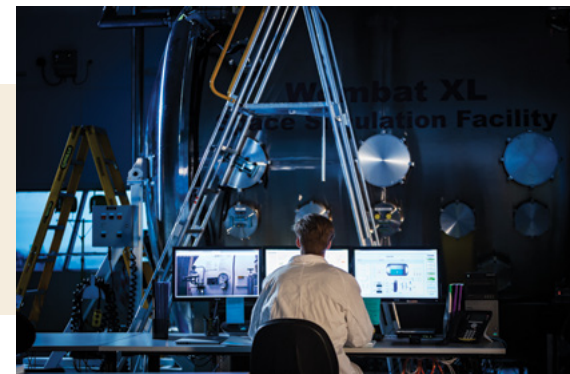


[Learn more](#)



“The Master of Laws (LLM) degree prepared me for the rigours of my PhD program. I had practised as a lawyer in the Philippines, specialising in cybercrime prevention and data privacy protection. ANU offers a strong research profile and an opportunity to work under the supervision of leading scholars. These were my considerations in selecting which research schools to apply for. The relationship ANU has with the government crafting policies concerning international law together with Canberra’s quiet atmosphere creates a unique environment for writing a doctoral dissertation.”

Gemmo Fernandez – Philippines
Doctor of Philosophy



How to fund your degree

Ways to fund your tuition fees and other study expenses include getting a student loan, earning a scholarship or getting a job in Australia. Explore options for your situation.

1. Apply for a scholarship

ANU offers a variety of postgraduate scholarships every year. Their availability depends on the program you choose, the college managing it and your circumstances. Start by viewing all ANU international postgraduate scholarships and finding out how to apply for them.



Browse
postgraduate
scholarships

2. Receive the Chancellor's International Scholarship

This ANU scholarship supports academically outstanding international students from around the world – and we will automatically consider you for it when you submit your application to ANU. It reduces tuition fees by 25% or 50%, as well as the amount of your tuition fee deposit.



Learn more about
the Chancellor's
International
Scholarship

3. Gain credit for study and work experience

Credit for prior study or outstanding work experience reduces the cost of your degree by saving you from having to complete a course. Course credit can be equivalent to the value of a specific ANU course (specified credit) or not equivalent (unspecified credit) and count towards a major, minor or elective course.



Learn more about
course credit

4. Earn a scholarship from your home country

Some governments offer financial support to international students studying in Australia. You'll have to find more information yourself, since each country is different, but if you're successful, a scholarship from your government can cover a large portion of your study fees.

5. Take out a student loan

A student loan is like any other loan; it involves repaying an amount you borrow together with accumulated interest. Check if your government offers student loans, as they usually have less interest than private institutions.

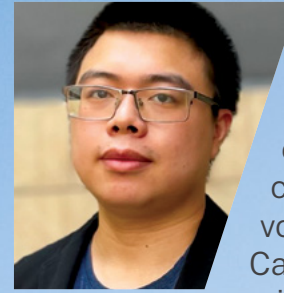
6. Ask your employer to fund your degree

Most employers budget for professional development and further study is one of the best ways to build your skillset while adding value to your organisation. If your employer is going to gain from your studies, think about asking if they will pay for your degree.

Paying your ANU tuition

When you accept an offer with ANU, we'll ask you to pay a AUD20,000 (or AUD40,000 for Doctor of Medicine and Surgery) deposit. Your tuition fees will then be withdrawn from this deposit until the money runs out, after which you'll receive an invoice at the start of each semester.

Learn more about your work rights as an international student on the Fair Work Australia website,
www.fairwork.gov.au



“The financial stability of the Chancellor’s International Scholarship enables me to choose how I want to contribute to the community. Whether it’s volunteering with the ReCyclery and the Canberra Environment Centre, ANU Thrive, or joining the faculty as a tutor, I would not have the free time to do such things – plus keep up with my study – if I didn’t have this scholarship.”

Trevin Susanto – Indonesia

Master of Economics

Coursework applicants

Check our admission requirements but you don't need to meet all of them before you apply. When we receive your application, we'll automatically consider you for a range of scholarships.

Admission requirements

If you're eligible for an offer but not able to meet all our admission requirements by the time you apply, we can make you one on a conditional basis.

Qualifications checklist

I have one of the following:

- ☐ an Australian bachelor's degree or international equivalent
- ☐ an almost completed Australian bachelor's degree or international equivalent⁺
- ☐ extensive and related work experience⁺⁺

Related subjects and scores

Some ANU degrees have related or 'cognate' subjects that you will need to have completed. Some also have a minimum grade point average (GPA)

for you to meet. Learn more about these by clicking on the 'Admissions and fees' tab in your degree program's web page.

Supporting documentation

You will need to upload to your application clear, colour copies of your:

- academic transcripts
- graduation certificates
- curriculum vitae
- documentation that proves you meet the ANU English language requirements.

How to apply

You can apply to ANU at any time of the year. You can nominate three degree preferences in your application, which increases your chances of getting an offer. We consider most applications submitted by the 15th day of the month for an offer on the first business day of the following month.

Application fee: AUD110.

You need to apply for accommodation separately. Learn more on page 12.

Apply through an agent

An education agent can support you throughout the application process and answer your questions about ANU. They can also upload your supporting documentation and submit your application on your behalf.



Find an agent

Apply directly to ANU

You can apply directly to the University by creating an account in the ANU application portal. Upload your details and follow the prompts to navigate your way through each step. You can log out and go back to your application at any time before you submit it.



Go to the ANU application portal

⁺ Let us know the date you expect to complete your degree in your application form and then supply us with a copy of it after we make you an offer.

⁺⁺ If you do not have a bachelor's degree, you can provide a curriculum vitae with your ANU application that includes your employment history (duties, responsibilities, hours, name and nature of employer) and provide the contact details of two referees. Your work experience will need to reflect the requirements of the degree you are applying for, so please find out what these are on the program and courses web pages at programsandcourses.anu.edu.au

Find your degree

Browse our coursework and research degrees and discover the GPA and admissions requirements that you'll need to meet before you apply.



Search programs
and courses

Talk to us

The members of our Future Student Experience team can answer any questions you have about our degrees and the application process. If they can't help, they'll put you in touch with the people in our colleges who can.



Talk to ANU

Application dates for study in 2025

Semester 1

26 February – 31 December 2024

Semester 2

June 2024 – May 2025

Application dates for study in 2026

Semester 1

March – December 2025

Semester 2

June 2025 – May 2026



Higher degrees by research (HDR) applicants

Find a supervisor at ANU before you apply. When we receive your application, we'll automatically consider you for a scholarship.

Admission requirements

To study a higher degree by research at ANU, you must have one of the following:

- an Australian bachelor's degree with at least second-class honours, or the international equivalent[^]
- another degree with a significant research/thesis component
- a combination of qualifications, research publications and/or professional experience related to your field of study.

Before you apply, you must also have the approval of a supervisor and/or one of our colleges.

Your application should include:

- a short, draft research proposal
- a list of three referees and their contact details
- original and translated copies of your supporting documents, such as academic transcripts and graduation certificates.

[^] Some programs may require upper first-class honours.

Find a supervisor

Finding the right supervisor is the first step of your HDR journey. Your supervisor will guide you throughout your research program.

Researchers at ANU belong to one of the seven academic colleges. Start your search for a supervisor by exploring the ones in the college whose disciplines are most relevant to you. You may find that more than one college can offer you supervision in your study area.

Applying for a PhD or MPhil is a bit like applying for a job, so it's a good idea to approach a supervisor in a professional manner. Take the time to explore their research and publications before you get in touch. Write a brief email introducing yourself and why you will be a good fit as an HDR candidate in the supervisor's research area.

You need the approval of a potential supervisor and the endorsement of their college before you can apply to ANU. Colleges and supervisors may also have their own application processes, so make sure you ask if this is the case.

Learn more about HDR admission



Follow the steps

Explore research areas

We are a research-intensive university and our research priorities reflect the challenges facing the world today.



Discover research areas

Talk to an ANU college

College staff assess HDR applications and will rank yours against other candidates. If they endorse you, they will automatically consider you for a scholarship.



Discover the application process for your research area

How to apply

Apply through the ANU postgraduate application portal at any time of the year. Make sure that you do this within the deadline of any scholarships you may be considering.

We take 6–8 weeks to assess applications. This could take longer if we're also considering you for a scholarship.

You need to apply for accommodation separately. Learn more on page 12.

Start your research application

Log in to the ANU application portal. It's free! Once you register, you can log out and go back to your application at any time.



Go to the ANU application portal

Contact the Graduate Research Office

We can help you with any queries you have about the status of your application or connect you to your college or research area.

Email: gro@anu.edu.au
Phone: +61 2 6125 5777

Find your degree

Browse our coursework and research degrees and discover GPA, prerequisite subject and any other admissions requirements you'll need to meet before you apply.



Search programs and courses

What did you think of the ANU student guide?

We'd love to know your impressions of our student guide! Your feedback will help us improve.



Complete the survey

All applicants

Other admission requirements

Before you can study a coursework or higher degree at ANU and in Australia, you will need to organise the following:

Proof of language ability

You need to show that you meet our English language requirements. We accept several English tests as evidence of this, including IELTS, PTE Academic and TOEFL and some high school qualifications completed in English.



Learn more about our English requirements

Student visa

After you receive confirmation of your enrolment and before you arrive in Australia to study, you will need to apply for, and be granted, a student visa. This is likely to be a subclass 500 student visa.

All visas are subject to conditions and you must ensure that you comply with these at all times. You must also have a valid passport for the duration of your studies.



Explore visa requirements

Overseas student health cover (OSHC)

Once you have accepted your offer, organise your Overseas Student Health Cover. This is a mandatory requirement of your student visa (unless your home country has a Reciprocal Health Care Agreement with Australia).

Your OSHC will cover the costs of visits to the doctor, some hospital treatment, ambulance services and some pharmaceuticals (medicines) while you are studying in Australia.



Learn more about OSHC



Australian
National
University

Postgraduate International Student Guide 2025/26