



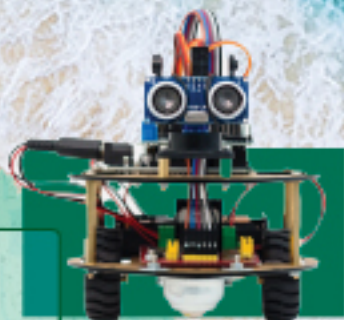
**STUDY
AUSTRALIA**

NSW Government Schools

International Student
Guide 2024



*Your future
begins today*



robotics
coding:

shift

a

u



About DE International

DE International is the international unit of the NSW Department of Education. We manage the international student program for all NSW government schools including applications, enrolments and compliance for overseas students studying in NSW government schools.

The NSW government school system is the largest education network in Australia. Our students achieve academic excellence in a safe, secure and innovative learning environment. Students will have a rich and rewarding learning experience.

Our support and compliance staff work closely with schools and homestay providers to ensure students learn and live in safe and supportive environments.

We also facilitate study tour group visits to our schools. Groups include students, teachers, education officials and overseas government delegations.

Welcome to NSW!

02

Why Study in NSW?

02

Reasons for Choosing a
NSW Government School

04

Future Focused Learning

05

STEM

06

Support Systems

07

NSW Higher School Certificate (HSC)

08

Academic Pathways

10

Your Academic Pathway
to Further Study

12

Intensive English Centres

13

Senior Secondary School

14

Junior Secondary School

15

Primary School

16

Our Successful Graduates

18

School Life

20

Living in NSW

20

Accommodation Options

22

Things to See and Do

23

Transport

23

Weather

24

Applications

24

Online Information

25

Entry Requirements

26

How to Apply

27

Calendar and Fees

28

Map of Participating High Schools in NSW



Reasons for Choosing a NSW Government School



Academic Excellence

- Our schools offer academic excellence in a safe, friendly and welcoming environment. Students acquire high-level English language skills, study a wide range of subjects and develop future-focused capabilities.
- Programs for gifted and talented students and extension subjects in senior high school ensure students are challenged and achieve their best.
- Each year, over 22% of our Year 12 international students appear on the Higher School Certificate (HSC) Honour Roll.



Exceptional Teaching

- Highly qualified, university-trained teachers are accredited through the NSW Education Standards Authority (NESA).
- Dynamic engaging instruction inspires students to achieve their best in academic subjects, sports, the arts and many other areas of study.
- Small class sizes provide more one-on-one guidance from teachers who cater for individual student needs and ensure each student achieves their maximum potential.



Student Wellbeing

- Individual care is provided for every student in a safe and secure learning environment. Every school offers an orientation program. Buddy systems pair new international students with other students to help them settle in and make new friends.
- School-based student support personnel include an international student coordinator, year adviser, counsellor, careers advisor and English language support staff.
- Students may also access our dedicated team of DE International advisors who provide additional support.
- According to the 2021 Safe Cities Index, Sydney is the safest city in Australia and in the top five safest cities in the world.



Learning Facilities

- Digital technology is integrated through the school curriculum and facilitated through Wi-Fi connectivity, tablets, laptops, interactive whiteboards, computers and video conferencing.
- Modern facilities, including science and language labs; libraries; auditoriums; arts, sport and recreational facilities designed to maximise student engagement, participation and learning. A range of technologies is provided for specialised subjects including 3D printers and robotics labs.
- Increased engagement in learning is achieved through programming tools, virtual learning environments, game-based learning and multimedia creation tools and simulations.



Academic Pathways

- The Higher School Certificate (HSC) is the highest educational qualification awarded in secondary education in NSW and is nationally and internationally recognised. It is awarded to students who have satisfactorily completed Years 11 and 12 at secondary school.
- International students successfully progress to universities and colleges in Australia and overseas.
- Past international students are now enjoying success at university and in professions both in Australia and overseas.



Language Support

- Intensive English Centres provide specialised support to high school students who require English language improvement.
- Our Intensive English Centres provide intensive English language tuition, orientation and welfare support, helping students adjust to their studies and new environment quickly.
- Primary school students may receive language support through school-based English language support teachers.







Accommodation Options

- Students perform better in school when they live in a supportive family environment.
- Homestay accommodation is a unique opportunity for international students in Years 9 to 12 to stay in an Australian family home and to learn about Australian culture. Homestay accommodation standards are regulated by DE International.
- International students under 18 years of age must live with a parent or approved carer.



Global Opportunities

- Students learn other languages and connect with students from a wide range of cultural backgrounds in the multicultural environment of our schools.
- Living and studying in NSW develops students as global citizens, enabling them to live and work anywhere in the world.
- Sydney is a culturally diverse city and New South Wales is the most popular state or territory in Australia for people born overseas to live (ABS 2016).



Future Focused Learning

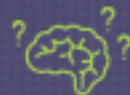
NSW government schools are committed to developing future-focused learning capabilities.

Future-focused learning prepares students across all curriculum areas and learning stages with skills and capabilities to thrive in a rapidly changing and interconnected world. Future-focused teachers know and understand the needs and talents of their students. They are flexible and select from a range of effective teaching strategies to engage students through the different modes of learning.



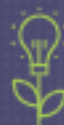
Flexible Learning Space

Future-focused learning and teaching requires students to work creatively and collaboratively to investigate, negotiate and solve real world problems. This can be supported by flexible learning spaces that provide students with choice in how and where they learn. Flexible learning spaces reflect the environments students may encounter in their future studies and workplace, where there is a focus on self direction, evaluation and collaboration.



Problem Solving and Critical Thinking

Students experience authentic, real-world contexts for project-based learning. They develop knowledge and analytical skills across multiple subject areas and combine them to investigate and respond to real world problems or challenges.



Creativity and Innovation

Creativity is recognised as a critical skill to address the challenges of tomorrow. Our schools foster creativity and innovation through the use of various teaching methods, real world tasks and integrated technology.



Integrated Technology

Future-focused learning and teaching seamlessly integrates a range of technologies to support learning across multiple curriculum areas.

Technology is integrated in meaningful ways to engage and empower students to create and share their learning.



Futures Learning Research

The use of evidence-based research successfully equips our teachers with effective and innovative teaching methods to engage students and prepare them with skills and capabilities for the future.



Leadership and Teamwork

Students develop collaborative and leadership skills in the classroom and across broader school activities. Opportunities include leading group tasks, presenting research findings and representation on the Student Representative Council and school leadership team.



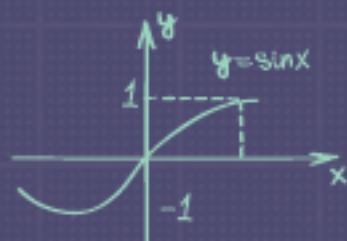
STEM

Science, Technology,
Engineering and Mathematics

STEM education enhances student learning experiences through engaging curriculum that may include integration, enquiry and project-based learning.

Students apply knowledge, deepen their understanding and develop high-order thinking skills within an authentic context, so they can fulfil future career aspirations that require STEM skills.

Students may follow pathways for STEM related careers, not only in science, medicine and engineering but also a range of highly sought-after global careers.



*I can see myself
doing this in the future*





😊
how's it going?



Support Systems

Student Wellbeing Focus

Our schools are dedicated to creating positive and enriching learning environments where students can achieve their potential.

Access to a wide support network of teachers and support staff ensures students settle into their new school quickly and easily.

International Student Coordinator

Each school has a dedicated and caring international student coordinator who is the first point of contact for international students. The coordinator will conduct orientation programs, introduce students to key staff at the school and provide ongoing support.

Year Adviser

Each academic year is assigned a year adviser who monitors the academic progress of all students in that year. The year adviser works closely with the school's learning and support team and classroom teachers to help students achieve academic success.

Careers Adviser

The careers adviser provides guidance to students in areas such as subject selection, career planning, selecting appropriate tertiary study options and preparation for entry into the workforce.

DE International Staff

Students may also access our dedicated team of multilingual support staff and student advisors who provide additional assistance.



English Language Support

Specialist teachers provide ongoing assistance to students during their enrolment in a high school. They teach students the English language and literacy skills needed in all subjects.

Bilingual Staff

Many of our schools have bilingual staff who will be able to communicate with parents and carers in their own language.

Learning and Support Team

This team looks after students' wellbeing. They help students to settle into their school and assist with any personal or study-related issues. The head teacher looks after the wellbeing of all students and the team provides guidance and support, as required. All matters discussed are treated confidentially.

Homework Centres

Many schools have homework centres and provide free tutoring for students after school. Teachers supervise students' completion of homework and provide advice on queries they may have regarding coursework.



NSW Higher School Certificate (HSC)

The HSC is a highly valued, internationally recognised credential. It gives international students the best opportunity to gain a place at highly ranked universities in NSW, Australia or overseas. Our students achieve exceptional results every year which gives them the opportunity to pursue their interests and professional career aspirations.

Benefits of the HSC



Wide range of study areas available – over 100 subjects



Pathway to universities in NSW, Australia and overseas



Education tailored towards student interests

The HSC is a two year program and students must satisfactorily complete Years 11 and 12. Students can choose from a wide range of subjects and can tailor their senior studies to their interests, abilities and future study plans at university.

Each year, approximately 25% of our international students in Year 12 appear on the HSC Honour Roll for scoring over 90 in a subject. In 2018, five international students achieved "Top All-Rounder" status for scoring 90 or above in 10 or more units. Multiple international students have received the highest possible ATAR of 99.95.

Academic Pathways

The diagram below shows the NSW school system and academic pathway from school to university.



PRIMARY SCHOOL



SECONDARY SCHOOL



UNIVERSITY





*I want
to be...*



Primary School

Kindergarten

Early Stage 1

Years 1-2

Stage 1

Years 3-4

Stage 2

Years 5-6

Stage 3

Junior Secondary School

Years 7- 8

Stage 4

Years 9- 10

Stage 5

Senior Secondary School

Year 11

Stage 6

Year 12

Intensive English Centre
Years 7-11 (if required)

HSC

Australian and International Universities

Degree

Masters Degree

PhD

What do
I want to do?



Your Academic Pathway to Further Study

The HSC results are used by the Universities Admissions Centre (UAC) to calculate a rank order of students known as the Australian Tertiary Admission Rank (ATAR). The ATAR is a ranking system based on HSC results that is used to allocate university placements. Each university sets an ATAR as the minimum entrance level for each tertiary course.

Deciding what to study at university is an important decision which can be challenging for students. There are many pathways to further education, however choosing the right subjects at school can make it easier for students to gain entry and succeed.

Our schools have Careers Advisors who help students make decisions regarding their future and career. Students are given support and advice on what to study and what careers their subject choices may lead to.

Please note that universities set their own subject prerequisites and course minimum entry requirements. International students are encouraged to seek advice from their International Student Coordinator or Careers Advisor regarding suitable subject choices for university entry.

Examples of possible careers based on subjects studied:



Career

Accounting
Banking and Finance
Business
International Relations
Law



Health and Medical Sciences
Medicine
Nutrition and Dietetics
Optometry
Physiotherapy



Aeronautical Engineering
Architecture
Engineering
Information Technology

Subjects

- Accounting/Business Studies/Economics/Legal Studies
- Chemistry/Physics
- Mathematics
- Society and Culture/History

- Biology
- Chemistry
- English as a Second Language
- Mathematics
- Physical Development Health and Physical Education
- Physics

- Engineering Studies
- English as a Second Language
- Industrial Technology
- Information Processes and Technology
- Physics
- Software Design and Development



Thuy Linh Chu's Pathway to Success

"My advice to students who are interested in studying at a NSW government school is to use Year 11 and 12 to study subjects that you really enjoy. Doing this will give you a sense of direction for the university qualifications you want to study and what type of job you want to have in the future."

Thuy Linh Chu



my first day!



Subjects Studied

- Ancient History
- Chemistry
- English as a Second Language
- Mathematics Extension 1 & 2
- Modern History
- Physics



Major School Achievements / School Involvement

Kogarah High School
Elected as School Captain



University Course

Bachelor of Science (Maths) & Bachelor of Engineering (Chemical)



Current Occupation

Engineer – employed full time

Jiahua (David) Huang's Pathway to Success

"Studying in a NSW government school is a truly once in a lifetime experience. Here you will learn to be more independent and become a much stronger individual. It is a great stepping stone for your future which could lead to a variety of possibilities – a place where many fantastic careers start."

Jiahua (David) Huang



Subjects Studied

- Chemistry
- Chinese
- English as a Second Language
- Mathematics Extension 1 & 2
- Physics



Major School Achievements / School Involvement

Killarney Heights High School
Dux of School
Nominated for 2012 Academic Award



University Course

Bachelor of Medicine/
Doctor of Medicine



Current Occupation

Junior Medical Officer at St George Hospital (starting 2018)



ABC

This is cool



Intensive English Centres

Students need strong English language skills to excel in their studies. Our Intensive English Centres (IEC) teach English through the curriculum, enabling students to continue their maths, science and other subjects while developing the English language skills they need to succeed.

NSW government schools offer intensive English programs for students entering high school from 12 years of age.

The IEC helps students to understand our school system and provides English language tuition and welfare support.

Advantages of enrolling in a NSW government school IEC:

- Study in a small class (maximum 18 students) with students of a similar age and English proficiency
- Learn intensive English within the school and through the school curriculum
- Students receive assistance so they can settle quickly and are provided support through our transition program to high school
- Participate in school activities with partner high schools
- Access to school counsellors and other support staff
- Use of all school facilities.

University-trained and qualified English as a second language teachers provide lessons in English through core high school subjects.

Duration

Intensive English programs are conducted throughout the school term. Students typically require two terms to transition to their mainstream course.



I can do this

Locations

IECs provide intensive English programs in the following NSW government high schools in Sydney and Wollongong:

- Armidale
- Bankstown
- Beverly Hills
- Cabramatta
- Central Sydney Intensive English High School
- Chester Hill
- Evans
- Fairfield
- Holroyd
- Kogarah
- Lurnea
- Marrickville
- Marsden
- Miller
- Northern Sydney (St Ives)
- Warrawong (Wollongong)



Senior Secondary School

Years 11 and 12 enable students to develop the necessary skills and knowledge they need to successfully complete the NSW Higher School Certificate (HSC).

as·pir·ation
~ (to do/be),



The HSC is a two-year program with assessment tasks in each subject, practical work for some subjects and a final external written examination, in each course, at the end of Year 12.

Curriculum

Students must complete at least 12 units of study in Year 11 and 10 units of study in Year 12, including English. Most HSC subjects are worth 2 units each. Students typically study a minimum of six subjects in Year 11 and continue with at least five of these subjects in Year 12.

Compulsory Subject

English (Standard or Advanced) or English as a Second Language (ESL)

Choice of Subjects

A wide range of subjects are available in the NSW curriculum, including:

- Ancient or Modern History
- Business Studies
- Creative Arts (Dance, Drama, Music, Visual Arts)
- Economics
- Engineering Studies
- Food Technology
- Geography



- Legal Studies
- Mathematics (with extension subjects available)
- Personal Development, Health and Physical Education
- Science (Biology, Chemistry, Earth and Environmental Science, Physics)
- Software Design and Development
- A wide choice of languages
- A selection of vocational subjects that also provide a Certificate-level qualification upon completion.




For more information visit the NSW Education Standards Authority (NESA) website: educationstandards.nsw.edu.au/wps/portal/nesa/home

Intakes

Year 11 Only

- Term 1 (January)
- Term 2 (April)

CRICOS COURSE CODE: 073980K



Junior Secondary School

Students in junior secondary school choose from a broad range of subjects and take on more personal responsibility for their learning. They must present personal opinions and interact during lessons, as well as ask questions and participate in group activities.

The junior secondary school program covers Years 7 to 10. Students may commence anytime up to the beginning of Term 4 (October) of the academic year.

Curriculum

Learning in Years 7 to 10 focuses on eight key learning areas (KLAs):

- Creative Arts (Dance, Drama, Music and Visual Arts)
- English
- Human Society and Its Environment
- Languages
- Mathematics
- Personal Development, Health and Physical Education
- Science
- Technologies.

Students who are talented in performing arts (dance, drama, visual arts or music), technology, languages or sport may apply to high schools which offer specialist facilities.

Intakes

Years 7 to 10

- Term 1 (January)
- Term 2 (April)
- Term 3 (July)
- Term 4 (October)

CRICOS CODE: 073879C



Today was awesome!

1 2 3 4 5

Primary School

NSW government schools encourage self-expression and help students become independent learners. Students will develop strong literacy and numeracy skills. Lessons are designed to respond to the needs of individual students.



Primary school education in NSW begins in Kindergarten (5 years of age) and ends in Year 6 (12 years of age).

Curriculum

Learning in Kindergarten to Year 6 focuses on six key learning areas (KLAs):

- English
- Creative Arts
- Human Society and Its Environment (including Languages)
- Mathematics
- Personal Development, Health and Physical Education
- Science and Technology.

Intakes

Kindergarten to Year 6

- Term 1 (January)
- Term 2 (April)
- Term 3 (July)
- Term 4 (October)

CRICOS CODE: 0090920





Our Successful Graduates

we did it!



Fathimath Aina Ibrahim – Maldives
Leadership Award Winner

"I would definitely recommend attending a NSW government school. The environment and resources are very good and the teachers are very welcoming. I enjoyed my time here thoroughly and I became the first international student to be elected school captain at my school."

Subjects studied

English, Physics, Chemistry, Biology, Business Studies, Economics, History, Geography, Mathematics, Photography

Extra-curricular activities

School Captain, Student representative council (SRC), Peer mentor for international students program, Multicultural Day



Trung Hao Tran – Vietnam
School Service Award Winner

"Studying in a NSW government school has allowed me to learn about a new culture and lifestyle and to meet new people. I really enjoyed my school's teaching style, which integrated fun and learning. My international student coordinator was very helpful and was always there to help me."

Subjects studied

Biology, English, Mathematics, Geography, Theology, Intro to Engineering Design, Spanish

Extra-curricular activities

Student representative council (SRC) Volunteer at school and community fundraising projects such as Butterfly Badge Week, Kindness Week, White Ribbon and World's Greatest Shave, Peer support to international students



Andrea Yirong Zhao – China
Academic Award Winner

"I think the best thing about my school was the friendly atmosphere. I made many Australian friends, especially in the prefect body because we had a meeting every week to talk about school activities and events. My greatest achievement at school was being awarded the school dux certificate at graduation night."

Subjects studied

Mathematics Accelerated, English ESL, Mathematics Extension 1, History, Science, Chemistry, Biology

Extra-curricular activities

School and community fundraising Volunteer at Red Cross, Cancer Council and Red Shield Appeal, Fund raising for UNICEF and CanTeen, Teacher Assistant in a Chinese Culture School

STUDENT**AMBASSADORS**

International student ambassadors represent NSW government schools at official functions and help to guide and support existing students. They are chosen for their outstanding academic achievements or their ongoing service and dedication to their school and local community.



achieve things you think are impossible...

**Betty Yuntian Bi – China****Academic Award Winner**

"I've made connections with local students through organising school events and exchanging ideas with them and learning about each other's culture and values has been a valuable experience. My teachers encourage students to develop their own unique traits, so I've found that being in Australia gives me the opportunity to be myself."

Subjects studied

English ESL, Chemistry, Chinese Literature, Chemistry, Mathematics

Extra-curricular activities

Prefect, Student representative council (SRC), Volunteer at fundraising for CanTeen, UNICEF, ACON, Red Cross, Daffodil Day, and the Salvation Army

**Mahime Watanabe – Japan****School Service Award Winner**

"I think the best thing about studying in Sydney is that you learn to think for yourself and to manage your time to develop the lifestyle that best suits you. Having gone to a NSW government school, not only have I learnt English, but I've also learnt that if I try my very best at all times, I can achieve something great."

Subjects studied

English Advanced, Mathematics Extension 1 & 2, Chemistry, Biology, Social Science, Science, Geography

Extra-curricular activities

Prefect: Environment Captain, Student representative council (SRC), Bob Belleair Award for Research and Inquiry, Fundraising for school and community

**Sam Semin Lee – South Korea****Leadership Award Winner**

"I was able to get involved in so many different events, such as band competitions and showcases, drama events, musicals and orchestra. My biggest achievement at school was being part of the prefect team because it gave me so many opportunities to engage with other people and also, to make great connections with people outside of school."

Subjects studied

Mathematics, Japanese, English, Science, Geography, Visual Arts, Social Studies, Music, Technology and Textiles

Extra-curricular activities

Prefect, Member of school's Orchestral and Rock Bands, Music Composition and Song Makers Workshops



School Life

A typical school day

School hours are generally from 8.45am to 3.00pm, Monday to Friday. In a typical school day, there are five to eight lessons, ranging from 40 minutes to one hour. There are two breaks in the school day – a morning tea break (recess) and a lunch break, both of which are supervised by teachers. Students usually bring their own morning tea and lunch to school or they can purchase a range of nutritious meals at an additional cost from the school canteen.

Students are expected to attend school every weekday and daily attendance records are kept. Strict attendance is an important condition of the student visa.



Uniform

NSW government schools have a uniform policy. Schools will provide you with information about their uniform requirements at enrolment.

A school uniform usually costs between A\$250 and A\$300 depending on the number of items bought.

School Assessment and Academic Progress

School assessments and homework are an important part of the school program. Students may be required to complete assignments, oral presentations and examinations which contribute to their final grades. These assessments help teachers to evaluate academic progress and prepare reports for parents.

Excursions

Learning occurs both inside and outside the classroom. Schools organise subject specific excursions (for example, a visit to the art gallery, museum or zoo) which provide practical field experiences. Excursions are an important and compulsory part of the school curriculum.



Sports

Sport is offered during school hours once a week. Sporting events such as athletics and swimming carnivals help to develop team spirit and good sportsmanship skills.

Extracurricular Learning

A range of extracurricular opportunities are available, including competitive sports, school performances, music groups and clubs, debating and public speaking. These activities are a great way for students to practise their English and make new friends.

Community Engagement

Community engagement through volunteering opportunities helps students develop an increased sense of social responsibility. Students develop global citizenship skills, learn about the importance of helping others and are exposed to diversity and multiculturalism. They apply learning to real life situations and become involved in charities and fundraising activities that address local and global issues.



A typical school day

Sample school timetable for high school

Before school	Optional extension classes Performing arts rehearsals Sport training
8:40 – 8:45	Roll Call
8:45 – 9:45	Class 1
9:45 – 10:45	Class 2
10:45 – 11:00	Recess
11:00 – 12:00	Class 3
12:00 – 1:00	Class 4
1:00 – 2:00	Lunch
2:00 – 3:00	Class 5
After school	Optional extension classes Homework centres supported by teachers Optional extracurricular activities e.g. sport, chess club, music, debating, Tournament of the Minds, Mock Trials



Accommodation Options

Student accommodation options are based on the school year the student will be entering.

Primary School

Junior Secondary School

Senior Secondary School

Kindergarten	1	2	3	4	5	6	7	8	9	10	11	12	
									✓	✓	✓	✓	Homestay
									✓	✓	✓	✓	Parent-nominated carer
					✓	✓	✓	✓	✓	✓	✓	✓	Department of Home Affairs approved direct relative
✓	✓	✓	✓	✓	✓	✓	✓	✓	✓	✓	✓	✓	Parent

Accommodation

Students perform better in school when they live in a supportive family environment.

International students under 18 years of age must live with a parent on a guardian visa or an approved carer. Accommodation options available for students are based on the school year that the student will be entering.

Students not living with a parent or a direct relative approved by the Department of Home Affairs live in accommodation approved by the NSW Department of Education.

The diagram above shows the options available to students depending on their school year.



My homestay family is great



Homestay

What Is Homestay Accommodation?

Homestay accommodation is a unique opportunity for an international student to live with an Australian family and to learn more about Australian culture. Homestay families welcome international students into their homes and lives, accepting them as part of their family.

A homestay family can be an individual, couple or family unit.

A student placed with a NSW Department of Education-approved homestay family will be met on arrival at Sydney International Airport and supported by a caring family during their studies.

Australia is very multicultural and our homestay families are a reflection of this.

Parent-Nominated Homestay

For students enrolling in Years 9 to 12, parents may nominate a distant family member or close family friend to be a carer. The homestay carer must be assessed by DE International and meet minimum standards before approval is granted.

Why Choose Homestay?

Homestay accommodation provides students with:

- a safe place to live
- the opportunity to improve English language skills
- a unique opportunity to experience life with an Australian family
- a caring family environment.

All homestay families have undergone a Working With Children Check (WWCC) and are monitored by a homestay provider registered with DE International.



How is a Homestay Family Allocated?

Parents will be asked by a DE International registered homestay provider to provide detailed information on their child's preferences. The homestay provider will then consider these when placing the child with a suitable family. The homestay provider will find a homestay family within reasonable travelling distance to their school.

What to Expect?

Homestay families provide students with:



- their own fully furnished bedroom in the family home (including a bed, study table, chair and cupboards)



- all meals, including food to make lunch on school days



- use of household facilities, such as the laundry.

As a member of the family, students can expect to contribute to family chores, including tidying their bedroom and clearing the table after meals.



Things to See and Do

Famous beaches, festivals, national parks, iconic landmarks, spectacular coastlines, museums, unique wildlife – there's no end to what you can see and do in New South Wales.

Things to do in Sydney

Explore one of the most beautiful cities in the world. Sydney is home to world renowned landmarks, including the Sydney Harbour Bridge, Sydney Opera House, Bondi Beach and Darling Harbour. Climb the bridge, cruise the harbour and explore national parks and unique wildlife.

There are many exciting events to see and enjoy all year round:

- Vivid Sydney light festival
- New Year's Eve fireworks
- Sporting events
- Festivals and cultural celebrations
- Exhibitions, museums, theatres and shows.

Explore an International City

Sydney is a dynamic and diverse city that has a multicultural lifestyle. Communities are very welcoming of international students. Our schools value the diversity that our international students bring to school communities.

Things to do in Regional NSW

From cities and major regional centres to small towns and outback communities, regional NSW offers diverse and unique experiences for visitors.

- Discover some of Australia's native wildlife, including kangaroos, koalas, exotic birds and more
- Take a bushwalk through beautiful national parks
- Visit one of the World Heritage-listed areas including the Blue Mountains, Willandra Lakes, Lord Howe Island and the Gondwana Rainforests
- Explore, swim, snorkel and surf the spectacular coastline.

"I've learnt that there are lots of different cultures in the world because Australia is a very multicultural country and that helped me shape a personal value that is more open-minded."

Mahime Watanabe – Japan – School Service Award Nominee

"International students are excellent ambassadors for their home country and allow all students and teachers to have a deeper appreciation of other cultures."

Elizabeth Godwin – Principal, Cabramatta High School



Transport

Sydney has an excellent public transport system, including trains, buses, light rail and ferries.

Public transport provides students with easy travel options to and from school by train, bus, light rail or ferry.

International students can obtain discounted fares at half price.

For train, bus, ferry and light rail trip planning, maps, ticketing, transport updates and accessible travel information, visit transportnsw.info or call 131 500.

Weather



Summer
December – February

Average temperature in Sydney
18.6 – 25.8°C



Autumn
March – May

Average temperature in Sydney
14.6 – 22.2°C



Winter
June – August

Average temperature in Sydney
8.8 – 17°C



Spring
September – November

Average temperature in Sydney
11 – 23°C



the blue mountains



search →



Online Information

Visit our website for a wide range of information about NSW government schools
deinternational.nsw.edu.au



Information includes:

- individual profiles on participating NSW government schools and Intensive English Centres
- brochures for our programs
- registered education agent search function:
 - find agents in your country
 - all contact details are provided, including the agent's website address.
- links to documents and other forms
- accommodation options
- registered homestay providers
- fee information
- term dates for upcoming years
- latest news and updates
- information on other programs offered, including:
 - Study Abroad which offers an exciting opportunity to experience a uniquely Australian lifestyle while studying. Students can spend 3, 6, 9 or 12 months at a school in Sydney or regional NSW.
 - Study Tours which provide visiting adult and student groups with a program of educational activities, cultural and social interaction with Australian students and sightseeing. Tour duration can range from half a day to 10 weeks.

I made many Australian friends at my school



Video

Our YouTube and Vimeo channels (DE International) have videos of events, such as the annual International Student Awards, as well as testimonials from international students, teachers and student ambassadors.



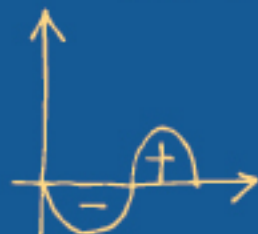
$$\pi = 3, 14$$

Applications

What will
I learn next?



$$\begin{cases} 24(2x-2) = 7(x^2-2x) \\ y = x-2 \end{cases}$$



Entry Requirements

Academic

- Students entering the preliminary course (Year 11) must have completed Year 10 or its equivalent in Australia and overseas. They must also have good passing grades in school reports in the main academic subjects and English.
- Students enrolling in Years 7 to 10 must provide evidence that they have good passing grades in the main academic courses including English
- Students must demonstrate a continued pattern of study in a mainstream school.

English

- Enrolment in a NSW government school Intensive English Centre

OR

- Secondary studies conducted in English for a minimum of two years

OR

- Minimum IELTS (International English Language Testing System, General or Academic) score of 5.5 (Year 11) or 5.0 (Years 7 to 10) or equivalent results in another approved English language test (including TOEFL, AEAS and Eiken).
- There are no English language entry requirements for primary school children in Kindergarten to Year 6. Students 12 years of age or over may need to enrol at an Intensive English Centre before they enrol in Year 7.

My school in
Byron Bay



Riverside Girls
High School



How to apply →



How to Apply

Choose between two methods of applying: through a registered education agent or through our online application form.

Through a DE International Registered Education Agent

Registered education agents assist by providing you with accurate and up-to date information and advice regarding programs, schools, application procedures and living and studying in Australia. They will also assist with your visa application.

How to Find an Agent

You can find an agent by using the agent search function on our website. You can search by country, agency name or program type. All contact details are available, including the agent's website address, so that you can choose the agent you think is best for you.

We recommend choosing only the services of education agents registered with DE International.

Apply Online

You can submit your application online by registering through our website. Follow the prompts and upload your supporting documents.

Go to: deinternational.nsw.edu.au

Contact Details

Website

www.deinternational.nsw.edu.au

Email

isc@det.nsw.edu.au

Phone

1300 300 229 (option 2) in Australia

deinternational.nsw.edu.au/contact-us

(outside Australia)

Application Process

1 Student submits online application with supporting documentation to DE International

2 DE International assesses the application against eligibility criteria and, if successful, confirms placement with IEC and school.

3 DE International issues offer letter detailing study plan and course costs.

4 Student and parents accept offer and return offer acceptance to DE International with payment of fees.

5 DE International issues Confirmation of Enrolment (CoE) and Confirmation of Appropriate Accommodation and Welfare (CAAW) form (if required).

6 Student applies for student visa.



Today's the day
30 JAN



Calendar and Fees

2024-2025 Calendar

The academic school year in New South Wales is divided into four terms.

2024

Term 1	30 January to 12 April
Term 2	29 April to 5 July
Term 3	22 July to 27 September
Term 4	14 October to 20 December

2025

31 January to 11 April
28 April to 4 July
21 July to 26 September
13 October to 19 December

2024 International Students Fees

Description	Amount
Application fee (non-refundable)	A\$295
Tuition fees per student per year*	
Years K to 6 (Primary)	A\$15,000
Years 7 to 10 (Junior Secondary)	A\$16,000
Years 11 and 12 (Senior Secondary)	A\$18,400
Intensive English Centre	A\$8,000 for two terms
Homestay accommodation	
Parent nomination homestay fee**	A\$415 plus A\$30 per week
Accommodation placement fee	A\$415
Homestay fee	A\$430 per week
Other fees	
Airport pick-up fee	From A\$220
School uniforms	A\$300-\$400
School transfer fee***	A\$795



- * Tuition fees cover the charges for tuition and administration (includes text book hire and excursions up to the value of A\$300).
- ** Parent nomination homestay must be inspected annually and fee must be paid for each year for the duration of the course or until the student turns 18, whichever occurs first.
- *** School transfer fee applies to students who request a change of school after the school placement is confirmed with the Confirmation of Enrolment (CoE).

NSW Government Schools

High School Locations



To download a profile of any of the schools, visit our website deinternational.nsw.edu.au



No.	School name	Loc.	No.	School name	Loc.	No.	School name	Loc.
1	Alexandria Park Community School	G8		Georges River College:		82	Port Hacking High School	E11
2	Armidale Secondary College	N1	42	– Hurstville Boys Campus	E9	83	Prairiewood High School	B7
3	Arthur Phillip High School	C6	43	– Oatley Senior Campus	E10	84	Randwick Boys High School	G9
4	Ashfield Boys High School	F8	44	– Peakhurst Campus	D9	85	Randwick Girls High School	G9
5	Asquith Girls High School	E3	45	– Penshurst Girls Campus	E9	86	Riverside Girls High School	F7
6	Bankstown Girls High School	D9	46	Glenwood High School	B4	87	Sir Joseph Banks High School	C9
7	Bankstown Senior College and Bankstown Intensive English Centre	C9	47	Greystanes High School	B6	88	South Sydney High School	G9
8	Barrenjoey High School	I2	48	Holroyd High School and Holroyd Intensive English Centre	B7	89	St Ives High School and Northern Sydney Intensive English Centre	F4
9	Bass Hill High School	C8	49	Halsworthy High School	C9	90	St Johns Park High School	A7
10	Belmore Boys High School	B8	50	Homebush Boys High School	D7	91	St Marys Senior High School	A5
11	Beverly Hills Girls High School and Beverly Hills Intensive English Centre	D9	51	Hoxton Park High School	A8	92	Strathfield Girls High School	E8
12	Birrong Boys High School	D6	52	Hunters Hill High School	F7	93	Strathfield South High School	D8
13	Birrong Girls High School	D6	53	James Busby High School	A8	94	Sydney Secondary College Blackwattle Bay Campus	F7
14	Blacktown Boys High School	A5	54	Keira High School	M3	95	Sylvania High School	E11
15	Blacktown Girls High School	A5	55	Killarney Heights High School	G5	96	Tempe High School	F9
16	Blakehurst High School	E10	56	Kingsgrove High School	E9	97	The Forest High School	G5
17	Bonryrigg High School	A8	57	Kingsgrove North High School	E9	98	The Jannali High School	D11
18	Bossley Park High School	A8	58	Kogarah High School and Kogarah Intensive English Centre	F9	99	Warners Bay High School	M3
19	Burwood Girls High School	E7	59	Kotara High School	N3	100	Warrawong High School and Warrawong Intensive English Centre	M3
20	Cabramatta High School and Cabramatta Intensive English Centre	B8	60	Ku-ring-gal High School	F3	101	Wollongong High School of the Performing Arts	M3
21	Canley Vale High School	B8	61	Lambton High School	N3	102	Woolgoolga High School	N2
22	Carterbury Boys High School	B8	62	Liverpool Girls High School	B8	103	Wyndham College	A4
23	Carterbury Girls High School	B8	63	Lurnea High School and Lurnea Intensive English Centre	A9			
24	Casula High School	A9	64	Macarthur Girls High School	C6			
25	Cecil Hills High School	A8	65	Macquarie Fields High School	A10			
26	Central Sydney Intensive English High School	G8	66	Marrickville High School and Marrickville Intensive English Centre	F8			
27	Chester Hill High School and Chester Hill Intensive English Centre	C8	67	Marsden High School and Marsden Intensive English Centre	D6			
28	Concord High School	E7	68	Menai High School	C10			
29	Condell Park High School	C9	69	Merrylands High School	C7			
30	Crestwood High School	B5	70	Miller Technology High School and Miller Intensive English Centre	A9			
31	Cronulla High School	F11	71	Mitchell High School	A5			
32	Cumberland High School	D5	72	Model Farms High School	B5			
33	Davidson High School	G5	73	Moorebank High School	B8			
34	East Hills Boys High School	C9	74	Mosman High School	G6			
35	East Hills Girls Technology High School	C9	75	Mulrfield High School	C5			
36	Endeavour Sports High School	E11	76	Narrabeen Sports High School	H4			
37	Engadine High School	C11	77	Newcastle High School	N3			
38	Evans High School and Evans Intensive English Centre	A5		Northern Beaches Secondary College:				
39	Fairfield High School and Fairfield Intensive English Centre	B7	78	– Mackellar Girls Campus	H6			
40	Fairvale High School	B7	79	Northmead Creative and Performing Arts High School	C6			
41	Figtree High School	N4	80	Pennant Hills High School	D4			
			81	Pittwater High School	I3			



NSW Government Schools
NSW Department of Education
PO Box R1468 Royal Exchange
NSW 1225 Australia



1300 300 229 (option 2) in Australia

deinternational.nsw.edu.au/contact-us (outside Australia)



isc@det.nsw.edu.au



deinternational.nsw.edu.au

CRICOS PROVIDER NAME: NSW DEPARTMENT OF EDUCATION

CRICOS PROVIDER CODE: 00588M