

South Australian Government Schools

# International Student Program



Your journey starts here

**South Australian  
Government Schools**



Government of South Australia  
Department for Education



**There are many benefits in choosing to study abroad with South Australian Government Schools. Studying abroad is a big decision and we will help you throughout your journey.**



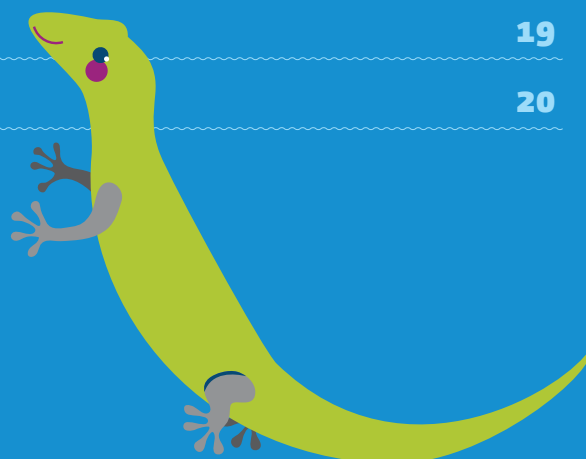
# Contents



follow us

facebook.com/SAGSinternational  
www.youtube.com/SAGovtSchools  
www.instagram.com/  
southaustraliangovschools

<b>Benefits</b>	<b>02</b>
<b>Schools</b>	<b>03</b>
<b>Curriculum and Education Journey</b>	<b>04</b>
<b>Specialised Subjects and Programs</b>	<b>05</b>
<b>Qualifications and Pathways</b>	<b>06</b>
<b>International Student Program Guide</b>	<b>07</b>
High School Graduate Program	08
High School Study Abroad Program	09
Regional Study Abroad Program	10
Primary School Program	11
Primary School Study Abroad Program	12
<b>English Language</b>	<b>13</b>
<b>Accommodation</b>	<b>14</b>
<b>Advantages</b>	<b>15</b>
<b>How to Apply</b>	<b>16</b>
<b>Enrolment Process</b>	<b>17</b>
<b>Lifestyle</b>	<b>18</b>
<b>Opportunities</b>	<b>19</b>
<b>Experience</b>	<b>20</b>



# Benefits

South Australian Government Schools has been providing study abroad experiences to international students since 1989. With over 140 schools accredited to deliver our International Student Program, we are able to offer you a range of short and long term study programs to meet your needs.

**Every aspect of your study program, including homestay accommodation, is centrally managed within our office by a caring team dedicated to your success and delivering a quality experience.** This makes South Australian Government Schools unique in Australia.

Your success, safety and wellbeing are our priority.



## THE BENEFITS OF STUDYING ABROAD WITH US INCLUDE

### Our Schools

- special focus subjects, programs and co-curricular activities
- wide range of specialist learning resources and facilities
- large open spaces and natural environments for sport and school activities
- International Student Program Manager for support and assistance
- local school buddy to help you settle into school life.

### Our Programs

- affordable tuition fees compared to other Australian schools
- centrally managed by the Department for Education
- individual school matching to best meet your interests and ambitions
- individual matching to a caring homestay family
- selection, accreditation and monitoring of all our homestay families
- accreditation and monitoring of all our education agents
- English support included as part of your study program.

### Our Support

- online pre-departure handbook to help you prepare before leaving home
- orientation program including health and safety, school and homestay expectations, visa conditions and money management
- safety and wellbeing checks
- academic progress reports
- tertiary studies counselling
- primary parent/guardian support
- 24 hour emergency phone service.



# Schools

South Australian Government Schools provide a safe, caring and supportive learning environment for all students.

The Department for Education accredits schools to deliver the International Student Program in an environment that supports international students and their learning objectives.

Our schools are located throughout metropolitan Adelaide and regional South Australia.

## Year levels

	Year Levels	Student Age
Primary School	Reception–Year 6	5–12 years
Secondary School	Years 7–9	13–15 years
	Years 10–12	16–18* years

\*Some schools consider students to 19 years. For more details, please contact us.

Most schools are either primary or secondary only. Some cater for Reception to Year 12 or specialise in senior secondary (Years 11–12).

## Academic Year

The academic year is made up of 4 terms (2 semesters) and starts in late January and ends mid-December.

**Semester 1:** Terms 1 and 2  
**Semester 2:** Terms 3 and 4

There are approximately 10 weeks in each term followed by holidays.

School hours are Monday to Friday, 8.30am to 3.30pm in most schools.

## School Uniform

All South Australian government schools have their own school uniform which may include a sports uniform.



# Curriculum and Education Journey

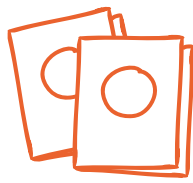


The Australian school curriculum is designed to address the individual needs and interests of students to provide a foundation for successful, life-long learning.



## Focus

Your interest and ambitions



## Subjects

Choose your subjects



## Pathways

Choose your future pathway



## Achievement

Complete year 12  
Achieve your SACE  
or  
Complete IB Diploma



## Tertiary studies

Commence tertiary studies  
(eg. university)

The curriculum challenges students in developing the essential skills and capabilities of:

- Literacy
- Numeracy
- Information and communication technology
- Critical and creative thinking
- Ethical understanding
- Personal and social capability
- Intercultural understanding

For students to develop these skills and capabilities, schools offer a broad range of subjects within the core learning areas of:

- English
- Mathematics
- Science
- Humanities and Social Sciences
- The Arts
- Languages
- Health and Physical Education
- Technologies
- Work Studies
- Vocational Pathways

**Senior secondary students in Year 11 and Year 12** are required to further develop their skills and capabilities to gain a depth of understanding, knowledge and sophistication of skill in order to achieve their South Australian Certificate of Education (SACE).

## International Baccalaureate

The Primary Years Program (PYP) and the Middle Years Program (MYP) are offered by several schools, while the International Baccalaureate Diploma is available in selected schools.

The PYP prepares students to become active, caring, life-long learners who demonstrate respect for themselves and others and have the capacity to participate in the world around them.

The MYP is a challenging framework that encourages students to make practical connections between their studies and the real world.

The International Baccalaureate Diploma aims to develop students who have excellent breadth and depth of knowledge – students who flourish physically, intellectually, emotionally and ethically. The curriculum is made up of six subject groups and a core, comprising theory of knowledge, creativity, activity, service and the extended essay. Students reflect on the nature of knowledge, complete independent research and undertake a project that often involves community service.

# Specialised Subjects and Programs

## Specialised Subjects

All South Australian government schools offer a broad range of interesting and specialised subjects within their curriculum.

Students who want to try a new subject or have a talent or passion for a particular subject area should consider this when choosing their school.

Some examples of specialised subjects include:

- Science and Mathematics: robotics, forensic science, nanotechnology, astronomy and viticulture
- Health and Physical Education: psychology, hospitality, tennis, volleyball, soccer, cycling and outdoor education
- The Arts: music, ballet, contemporary dance, textiles and fashion
- Technologies: computer aided design, broadcasting, graphic design, photography and animation

## Special Interest Programs

Some of our high schools also have **special interest programs** for students with a talent or passion for a particular subject area. These programs are usually a strong focus area of the school.

Some examples of special interest programs available include Languages, Music, Performing Arts and Sport.

**Entry into these programs may require evidence of student aptitude, an audition or try-out prior to acceptance.** Additional fees may apply.

## Co-curricular Clubs and Competitions

Schools also offer the opportunity to participate individually or as a team member in any school-based activities including music bands, engineering design competitions, debating, drama productions, sports teams and adventure activities.

A variety of state, national and international competitions provide a further challenge, testing the abilities, skills and knowledge of students in many areas including academic excellence, sports, enterprise and leadership.

## Gifted and Talented Education

Some high schools are recognised as centres of excellence in gifted and talented education and offer the IGNITE program.

A number of other high schools offer individualised programs to support students who have demonstrated outstanding ability or potential in a specific area including mathematics and science.

To find out more about the specialised subjects and programs offered in our schools, go to the **Choose a High School** page on our website.

[internationalstudents.sa.edu.au](http://internationalstudents.sa.edu.au)



# Qualifications and Pathways

## South Australian Certificate of Education

The South Australian Certificate of Education (SACE) is a modern, internationally-recognised secondary school qualification designed to equip you with the skills, knowledge, and personal capabilities to successfully participate in our fast-paced global society. The SACE also helps you learn how to work with and alongside others, and to understand how your decisions can affect people, situations and the world. These capabilities are essential to your future education, training and careers, and your role as an active and informed citizen.

The SACE is divided into Stage 1 and Stage 2. In planning your senior secondary study, you will complete an Exploring Identities and Futures (EIF) in Year 10 or when you start Year 11.

The SACE is based on a credit system where each subject per semester is equal to 10 credits. Students must achieve 200 credits, including compulsory subjects, to achieve their SACE.

Subject counsellors will assist with your subject selection so that you can achieve your best and have the necessary Tertiary Admission Subjects (TAS) to receive an Australian Tertiary Admission Rank (ATAR) upon achieving your SACE. The ATAR is internationally recognised.

## International Baccalaureate Diploma

The International Baccalaureate (IB) two year diploma program is also offered as a challenging alternative to the SACE and can lead to entry into universities across Australia and around the world.

The IB Diploma Programme offers a diverse learning experience. You can engage in creative pursuits, community service, and the development of physical and mental wellbeing.

## Pathways

The ATAR is recognised for entry into Australian universities and Technical and Further Education (TAFE) institutions, and is used by many universities around the world to select students for degree courses.

## Vocational Pathways

Some South Australian government schools offer Vocational Education and Training (VET) courses as part of their curriculum, assisting students gain industry specific skills and nationally recognised qualifications and certificates.

VET courses can be taken during and after secondary school to help students gain entry into a number of different industries.





# International Student Program Guide

## High School Graduate Program

- Academic achievement and completion of SACE
- 13–19 years of age
- Study for over 1 year

See more information on page **8**

## Regional Study Abroad Program

- Short term study and cultural experience
- 13–19 years of age
- Study for 1–4 terms

See more information on page **10**

## Primary School Study Abroad Program

- Short term study and cultural experience
- 5–12 years of age
- Study for 1–4 terms

See more information on page **12**

## Additional Information

### Accommodation

See more information on page **14**

## High School Study Abroad Program

- Short term study and cultural experience
- 13–19 years of age
- Study for 1–4 terms

See more information on page **9**

## Primary School Program

- Academic achievement and transition to high school
- 5–12 years of age
- Study for over 1 year

See more information on page **11**

## English Language

- Intensive Secondary English Course (ISEC)
- Intensive Primary English Course (IPEC)
- Ongoing English Language Support

See more information on page **13**

### How to Apply

See more information on page **16**

# High School Graduate Program

If you are 13 years of age or older and want to study for longer than one year, then the High School Graduate Program is for you! Experience living and studying alongside Australian students, pursue your individual academic interests and ambitions, gain a world class education and aim to graduate high school.

## Program Goal

academic achievement and completion of SACE

## Age range

13–19 years

## Program Length

over 1 year

## Location

Metropolitan Adelaide

## Commencement

any point from Year 7 – Year 12

## Your High School Graduate Program includes:

### Pre-Arrival Services

- application processing
- school placement
- homestay accommodation placement
- online pre-departure handbook.

### On Arrival Services

- Adelaide Airport meet and greet
- homestay family introduction
- school welcome and tour
- school enrolment assistance
- school orientation program
- school materials and initial stationery.

### School Support Services

- personal counselling
- subject and pathway counselling
- school term academic progress reports.

### English Language Services (more detail on page 13)

- Initial and ongoing English language support as required (this may include an Intensive Secondary English Course).

### Safety and Wellbeing Services

- Overseas Student Health Cover (OSHC) is mandatory if you are on a student visa and we can organise this for you
- regular wellbeing check-ups
- 24 hour emergency phone service.

## Accommodation

We will arrange your accommodation with a caring homestay family who will help you experience life in South Australia. Alternatively you can nominate to live with a relative or family friend. Please see Accommodation on page 14 for more details.

## Entry Conditions

To help us assess your application, we need the following:

### Academic Achievements

Please provide translated statements from:

- previous two years school reports with passing grades in core subjects
- relevant authority detailing your ability if you are interested in enrolling in a special interest program.

### English Proficiency

Please provide at least one of the following:

- translated statement from your current school detailing your English language proficiency
- International English Language Testing System (IELTS) or equivalent English language test results
- records that show you have been in an English medium school for a minimum of 2 years.

As a guide for entry into mainstream classes (except for a few selected schools), you are expected to have the following level of English proficiency or equivalent:

- IELTS 5.0 for Year 7 – Year 9
- IELTS 5.5 for Year 10 – Year 11

To assist your entry into mainstream classes, we may recommend that you undertake an Intensive Secondary English Course (more detail on page 13).

# High School Study Abroad Program

If you are 13 years of age or older and want to study for up to 4 terms (one year), then the High School Study Abroad Program is for you! Experience the Australian culture by living and studying alongside Australian students while improving your English and trying new subjects that interest you.

## Program Goal

short term study and cultural experience

## Age range

13–19 years

## Program Length

1–4 terms

## Location

Metropolitan Adelaide

## Commencement

any point from Year 7 – Year 12

## Your High School Study Abroad Program includes:

### Pre-Arrival Services

- application processing
- school placement
- homestay accommodation placement
- online pre-departure handbook.

### On Arrival Services

- Adelaide Airport meet and greet
- homestay family introduction
- school welcome and tour
- school enrolment assistance
- school orientation program
- school materials and initial stationery.

### School Support Services

- personal and subject counselling
- school term academic progress reports
- academic transcript (if required).

### English Language Services (more detail on page 13)

- Initial and ongoing English language support as required (this may include an Intensive Secondary English Course).

### Safety and Wellbeing Services

- Overseas Student Health Cover (OSHC) is mandatory if you are on a student visa and we can organise this for you
- regular wellbeing check-ups
- 24 hour emergency phone service.

## Accommodation

We will arrange your accommodation with a caring homestay family who will help you experience life in South Australia. Alternatively you can nominate to live with a relative or family friend. Please see **Accommodation** on page 14 for more details.

## Entry Conditions

To help us assess your application, please provide translated statements from:

- previous two years school report with passing grades in core subjects
- relevant authority detailing your ability if you are interested in enrolling in a special interest program.



# Regional Study Abroad Program

If you are between 13 and 19 years of age and want to study for up to 4 terms (one year), then the Regional Study Abroad Program is for you! You will learn English, make new friends and experience the Australian way of life in a friendly rural community set in one of South Australia's unique regional landscapes.

## Program Goal

short term study and cultural experience

## Age range

13–19 years

## Program Length

1–4 terms

## Location

regional South Australia

## Commencement

any point from Year 7 – Year 12

## Your Regional Study Abroad Program includes:

### Pre-Arrival Services

- application processing
- school placement
- homestay accommodation placement
- online pre-departure handbook.

### On Arrival Services

- Adelaide Airport meet and greet
- homestay family introduction
- school welcome and tour
- school enrolment assistance
- school orientation program
- school materials and initial stationery.

### Student Support Services

- personal and subject counselling
- school term academic progress reports
- academic transcript (if required).

### English Language Services (more detail on page 13)

- Initial and ongoing English language support as required.

### Safety and Wellbeing Services

- Overseas Student Health Cover (OSHC) is mandatory if you are on a student visa and we can organise this for you
- regular wellbeing check-ups
- 24 hour emergency phone service.

## Accommodation

We will arrange your accommodation with a caring homestay family who will help you experience life in South Australia. Please see **Accommodation** on page 14 for more details.

## Entry Conditions

To help us assess your application, please provide translated statements from:

- previous two years school report with passing grades in core subjects
- relevant authority detailing your ability if you are interested in enrolling in a special interest program.

# Primary School Program

If you are between 5 and 12 years of age and want to study for longer than one year, then the Primary School Program is for you! You will learn English, participate in interactive educational activities and make friends with young Australian primary school students.

## Program Goal

academic achievement and transition to high school

## Age range

5–12 years

## Program Length

over 1 year

## Location

metropolitan Adelaide

## Commencement

any point from Reception – Year 6

## Your Primary School Program includes:

### Pre-Arrival Services

- application processing
- school placement
- online pre-departure handbook.

### On Arrival Services

- school welcome and tour
- school enrolment assistance
- school orientation program
- school materials and initial stationery
- parent orientation information.

### School Support Services

- personal counselling
- regular school progress reports.

### English Language Services (more detail on page 13)

- Initial and ongoing English language support as required.

### Safety and Wellbeing Services

- Overseas Student Health Cover (OSHC) is mandatory if you are on a student visa and we can organise this for you
- 24 hour emergency phone service.

## Living in Adelaide

- As a primary school student you will live with your parent or nominated relative while studying in South Australia, which will require approval from the Department of Home Affairs.

## Entry Conditions

To commence your studies at:

- 5 years of age you must be listed on your parent's guardian visa or ELICOS visa
- 6 years of age or older you will need to apply for a student visa
- previous two years school report with passing grades in core subjects. (where available)



# Primary School Study Abroad Program

If you are between 5 and 12 years of age and want to study for up to 4 terms (one year), then the Primary School Study Abroad Program is for you! You will learn English, make new friends and experience living close to the city, hills or the beach.

## Program Goal

academic achievement and transition to high school

## Age range

5–12 years

## Program Length

1–4 terms

## Location

metropolitan Adelaide

## Commencement

any point from Reception – Year 6

## Your Primary School Study Abroad Program includes:

### Pre-Arrival Services

- application processing
- school placement
- online pre-departure handbook.

### On Arrival Services

- school welcome and tour
- school enrolment assistance
- school orientation program
- school materials and initial stationery
- parent orientation information.

### School Support Services

- personal counselling
- regular school progress reports.

### English Language Services (more detail on page 13)

- Initial and ongoing English language support as required.

### Safety and Wellbeing Services

- Overseas Student Health Cover (OSHC) is mandatory if you are on a student visa and we can organise this for you
- 24 hour emergency phone service.

## Living in Adelaide

- As a primary school student you will live with your parent or nominated relative while studying in South Australia, which will require approval from the Department of Home Affairs.

## Entry Conditions

To commence your studies at:

- 5 years of age you must be listed on your parent's guardian visa or ELICOS visa
- 6 years of age or older you will need to apply for a student visa
- previous two years school report with passing grades in core subjects. (where available).

# English Language



## High School

### Intensive Secondary English Course

To help you succeed in your studies and adjust to life in South Australia, we may recommend that you undertake an Intensive Secondary English Course (ISEC) as part of your study program. The ISEC tuition fee is the same as your commencing High School Graduate Program.

Through studying a range of curriculum subjects, such as mathematics and science, you will focus on learning the English language skills of reading, writing, speaking and listening. Your ISEC teacher will monitor your progress and determine if you study 1, 2, 3 or 4 terms of ISEC before entering mainstream classes.

The duration of ISEC will normally be two terms, depending on when you start the school year. If at the end of two terms your English language is still not proficient enough to start your mainstream studies, you may be required to complete additional intensive English language studies.

### English as an Additional Language

English as an Additional Language is a language subject designed for students from non-English speaking backgrounds. You can choose to study this as one of your subjects.

### Ongoing English Language Support

Ongoing English language support is provided by all schools across the curriculum to assist your learning.

## Primary School

To help you settle into your new school, make new friends and succeed in your studies we may recommend that you undertake the Intensive Primary English Course (IPEC) as part of your study program.

Through studying a range of activities, you will focus on learning the English language skills of reading, writing, listening and speaking.

The duration of IPEC will normally be two terms, depending on when you start the school year. If at the end of two terms your English language is still not proficient enough to start your mainstream studies, you may be required to complete additional intensive English language studies. The IPEC tuition fee is the same as your commencing Primary School Program.



# Accommodation

Living with a supportive homestay family will help you in your studies and enrich your South Australian experience.

If you are 13 years of age or over, we will arrange homestay accommodation for you unless you nominate to live with a relative or family friend (may require approval from the Department of Home Affairs).

Our homestay families have been carefully selected to host our international students. As part of their accreditation the family is interviewed in their home to better understand their role and responsibilities as a homestay, and each family member over 18 years of age undergoes a Working With Children Check.

We aim to find the best match between homestay family and student so that everyone benefits from the experience.

When matching you to a suitable homestay family we will take into account your individual preferences.

Your homestay family will provide you with:

- a furnished bedroom including a desk
- daily meals (breakfast, lunch and dinner)
- use of shared household facilities
- help in getting to and from school when you first arrive
- help in catching public transport
- help in opening a bank account (if needed)
- internet access
- a safe and caring family environment.





# Advantages

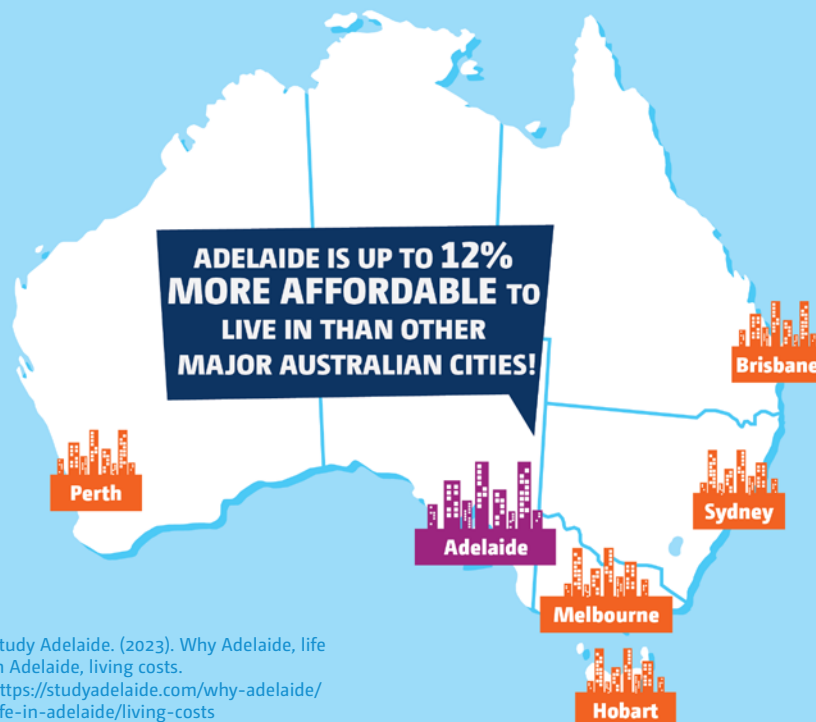
South Australia enjoys a high quality lifestyle with opportunities for all. South Australia's capital city, Adelaide, is a friendly, welcoming and sophisticated city and has often ranked among the world's top 10.

Adelaide is:

- a relaxed coastal city of 1.4 million people
- accessible via flights direct from many destinations
- clean with blue skies and attractive heritage and natural environments
- well-planned with excellent transport networks
- convenient with a central tertiary education, training and research hub
- at the centre of Australia's air, road and rail networks
- a vibrant multicultural community
- affordable for living, studying and doing business
- a significant centre for the arts and culture, including many festivals
- full of things to see and experience.



## Adelaide is one of the most affordable cities in Australia



Study Adelaide. (2023). Why Adelaide, life in Adelaide, living costs. <https://studyadelaide.com/why-adelaide/life-in-adelaide/living-costs>



# How to Apply

For assistance in applying, please contact an education agent or our office. For a list of our accredited agents, go to the **Find an Agent** page on our website:

[internationalstudents.sa.edu.au](http://internationalstudents.sa.edu.au)

## Find the right program for you

South Australian Government Schools offers long and short term study programs for primary and high school students.

When choosing the right program for you, consider whether you want to study for up to one year or more than one year. You can review our programs using the **Program Guide** on page 7.

## Program fees

You can find the program fees on the **Program Fees** page on our website.

## Choose a school

We have many quality accredited schools in metropolitan Adelaide and regional South Australia. To help choose the best school for you, consider the following:

- Do you want to pursue a particular talent or passion?
- Is there a particular subject of interest you would like to study?
- Do you want to continue learning or learn a new language other than English?
- What are your career ambitions?
- Would you like to live and study in metropolitan Adelaide or regional South Australia?

To make your choice of preferred schools, go to the **Choose a High School** or **Choose a Primary School** page on our website.



FOLLOW US  
ON OUR CHANNELS

## Other things to consider

### Visas

To study with South Australian Government Schools you will need an Australian Student or Tourist/Visitor Visa. It is important to read and understand your visa conditions to ensure that you meet these requirements while studying in Australia.

For information on visas, go to the **Department of Home Affairs website** (see below) or speak to your education agent.

### Travel Insurance

We recommend that you purchase travel insurance while you are studying abroad to cover your airfares and possessions in the event of loss or damage.

### Cost of Living

In addition to tuition and homestay fees you will have additional costs you will need to budget for while you are studying abroad. These can include local transport (South Australia has the most affordable public transport concessions in Australia at \$27.80 a month), mobile phone costs, clothing and other personal costs, additional school materials, school uniforms, excursions and camps.

To check what additional costs to budget for, go to the **Application Dates and Fees** page on our website.

## VISIT THESE WEBSITES

**South Australian Government Schools**  
[www.internationalstudents.sa.edu.au](http://www.internationalstudents.sa.edu.au)

**South Australian Certificate of Education (SACE)**  
[www.sace.sa.edu.au](http://www.sace.sa.edu.au)

**Department of Home Affairs**  
<https://immi.homeaffairs.gov.au>

**Study Australia**  
[www.studyaustralia.gov.au](http://www.studyaustralia.gov.au)

**Welcome to South Australia**  
[www.southaustralia.com](http://www.southaustralia.com)



# Enrolment Process

Please use this process as a guide for enrolling in a program of your choice.

**01**

**Submit your application form with the required documentation. Applications are online only.**

**02**

**Your application will be assessed and if accepted, you will be sent a Letter of Offer.**

**03**

**Return the Acceptance of Offer form with the payment of fees details as indicated in your Letter of Offer.**

**04**

**You will be sent a Letter of Confirmation, Confirmation of Enrolment (COE) and Confirmation of Appropriate Accommodation and Welfare (CAAW) letter.**

**Tourist Visa holders do not require a COE or CAAW letter.**

**05**

**Lodge your visa application.**

**06**

**Book your flights to Adelaide, South Australia and advise us of your flight details.**

**07**

**On arrival in Adelaide, you will be met at Adelaide Airport and introduced to your homestay family. Your parents will be notified of your safe arrival.**

## NEED SOME HELP?

If you would like assistance with your application, please contact an education agent or our office.





For a list of our accredited agents, go to the **Find an Agent** page on our website.

[internationalstudents.sa.edu.au](http://internationalstudents.sa.edu.au)

# Lifestyle

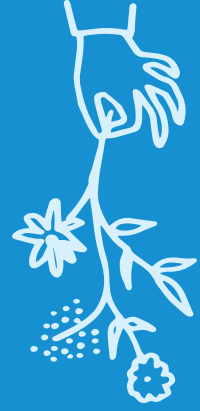


South Australia is a destination for all seasons where you can enjoy a relaxed and active lifestyle all year round. It is the perfect destination for living and studying, and it will not take you long to feel at home.

Season	Months		Climate	Temperature
<b>Summer</b>	December → February		Hot and Dry	25°C-35°C
<b>Autumn</b>	March → May		Mild, some rain	20°C-25°C
<b>Winter</b>	June → August		Some rain	10°C-15°C
<b>Spring</b>	September → November		Mild	20°C-25°C



# Opportunities



South Australia is internationally recognised as a centre for technology, research, innovation, tourism and The Arts and attracts people from all over the world in pursuit of further study and work.

South Australia's well established tourism industry is focused around its unique wildlife, adventure activities and natural environments.



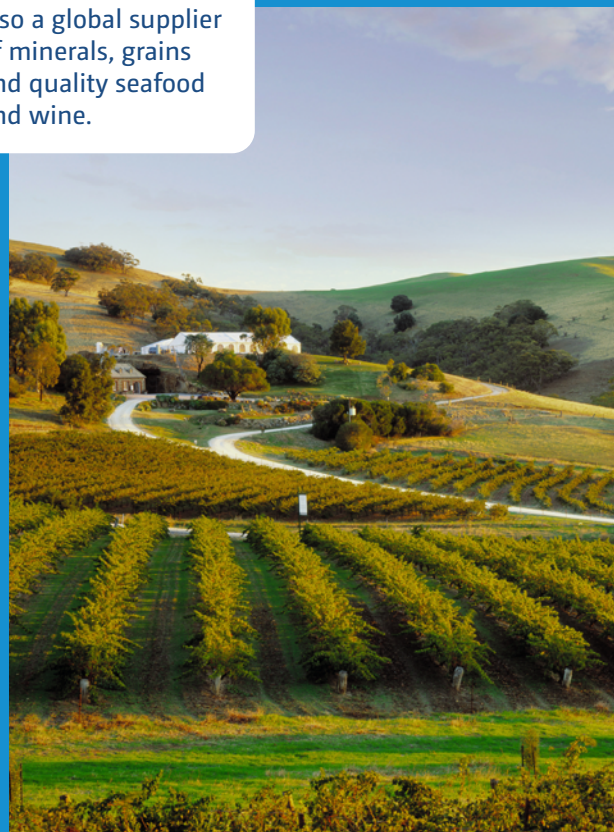
Known as the Festival State, South Australia enjoys a vibrant arts culture and plays host to large annual international festivals and sporting events such as the Adelaide Fringe Festival, WOMADelaide music festival, OzAsia Festival, Santos Tour Down Under cycling event and Superloop Adelaide 500 car race.



South Australia is also a global supplier of minerals, grains and quality seafood and wine.



Major industries such as energy, defence, manufacturing, bioscience and water management have all found a base in South Australia.



# Experience

There are so many fun things for you and your friends to do and see in South Australia! Adelaide has something for everyone from shopping to adventure sports, and is the gateway to the beautiful natural environments and townships of the Barossa Valley, River Murray, Flinders Ranges, Outback and Kangaroo Island.

## Here are a few things to start you off!

- Explore Adelaide and its zoos, museums, shops and cafes
- Experience a local or international cultural festival
- Cuddle a koala in one of our wildlife parks
- Learn how to surf or windsurf
- Enjoy bushwalking in one of our beautiful national parks
- Take the ferry to Kangaroo Island
- Go to a local sporting game or international event
- Learn about local Aboriginal heritage
- Go cycling or swimming at the beach
- Visit the Flinders Ranges and Outback

**For more ideas on things to see and experience, go to [southaustralia.com](http://southaustralia.com)**





**Look forward  
to receiving  
your online  
pre-departure  
handbook!**



## South Australian Government Schools

International Education Services,  
Department for Education  
+61 8 8226 3402  
education.isp@sa.gov.au  
internationalstudents.sa.edu.au

facebook.com/SAGSinternational  
youtube/SAGovtSchools  
instagram.com/  
southaustraliangovschools



Department for Education T/A South Australian Government Schools  
CRICOS Provider Number: 00018A.

©2023, Department for Education.  
Disclaimer: The information contained in this publication is correct at the time of printing but may be subject to change without notice.

Tourism images courtesy of South Australian Tourism Commission, John Montesi, Nick Rains, Grant Hancock, Greg Snell, Karen Smith (KaZKaptureZ) Jake Wundersitz.

The Department for Education assumes no responsibility for the accuracy of the information provided by third parties.



Government of South Australia  
Department for Education